

PRESS RELEASE

SATEL launches versatile VHF data modem and network management software bundle

SATEL has launched a versatile new VHF wireless data communications modem and network management software package designed for professional remote monitoring and control applications.

The latest in their range of modems, this innovative SATELLINE-3AS VHF reliably transmits data at up to 19.2 kbits per second over ranges of up to tens of kilometres depending on the environment. The 3AS VHF is remotely configurable and comes with powerful network management software.

The combination of excellent network management facilities and good propagation of VHF frequencies creates a robust platform for implementing a wide range of industrial telemetry systems.

It is particularly suitable for applications where reliability is a priority, as well as those which may be subject to frequent network re-configuration. Typical uses include the supervisory control and data acquisition (SCADA) of unmanned equipment such as water and pipeline pumping stations, wind turbines, and weather stations.

"Bundling remotely-manageable modems with management software makes the creation of wireless data collection and alarm transfer networks simpler than ever before", says SATEL's Marketing Director, Aulis Törmä. "The configuration potential embedded into this new product is immense, enabling our customers to create optimised solutions for an extremely wide range of networking scenarios."

Provided in a plug and play form: the modem comes in a tough housing measuring less than 14 x 7 cm - excluding the antenna - and weighs just 265 g. It is highly configurable and may be set up for data communications anywhere in the 138-174 MHz band, with up to 1600 or 800 channels spaced at 12.5 or 25 kHz, with data transmission at 9.6 or 19.2 kbits per second, and has carrier output power levels ranging from 0.1 to 5 W - depending on the coverage required (continuous operation at 5 W requires an additional heat sink). The radio also offers a universal serial interface for easy connection to local equipment. It is compatible with RS-232/422/485 standards, and can be programmed to operate at a variety of data rates between 1.2 and 38.4 kbits/second.

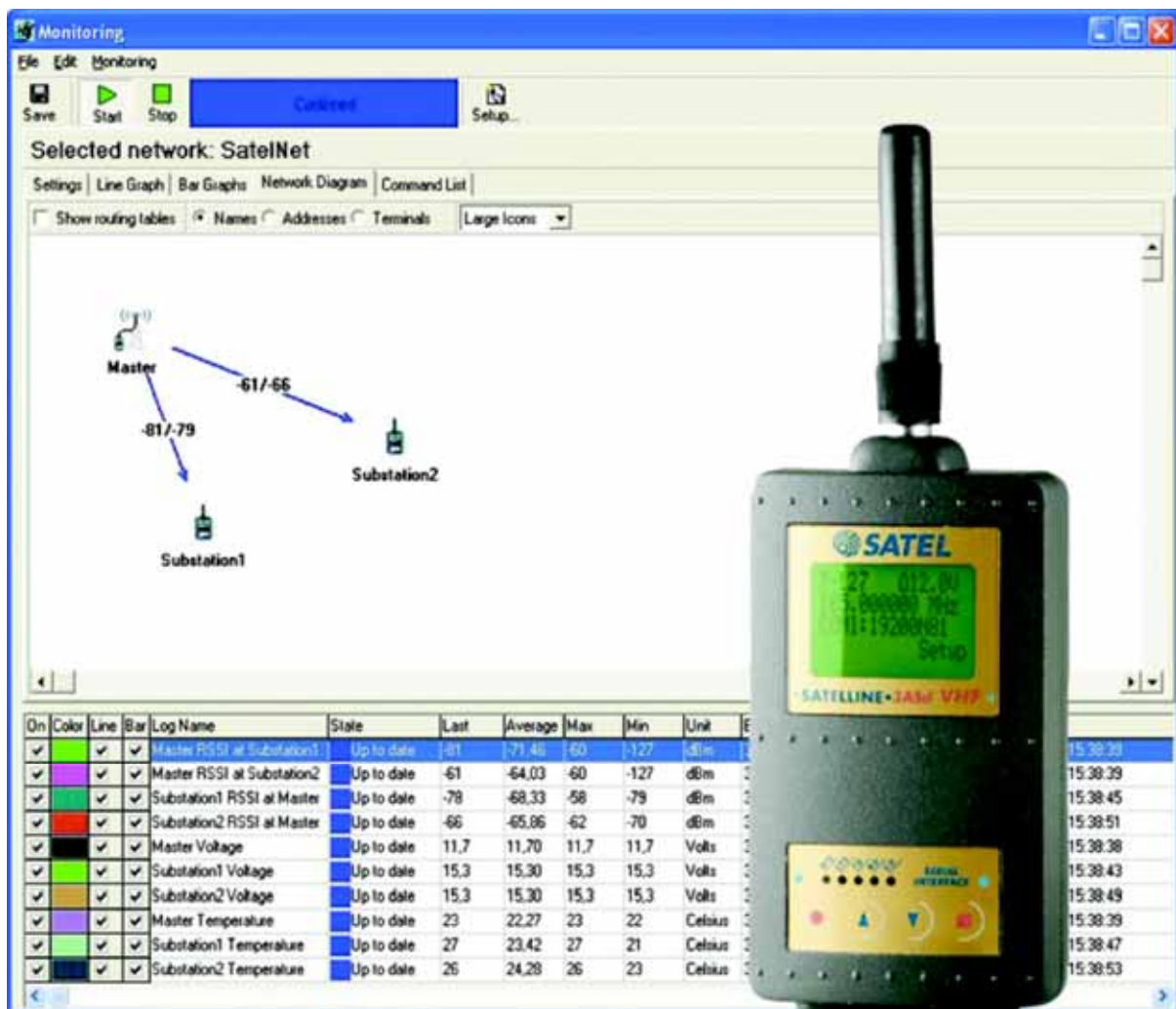
The versatile network management system (NMS) software provided with the modem greatly extends the modem's functionality. The software runs on a PC connected to a node which is configured as a master station. NMS provides a comprehensive suite of functions for both creating and managing radio modem networks, including the graphical design of topology and message routing or repeater functions, remote modification of settings, and logging and trending of field data.

Powerful diagnostic reporting facilities are also included, providing access to the SATELLINE modem's built-in reliability monitoring functionality. These include RSSI (received signal strength indication), indication of the power source voltage level, and

internal temperature. In conjunction with NMS's monitoring and data logging capability, these features allows users to both anticipate and deal with many potential service issues efficiently - for example by changing message routing and scheduling maintenance or inspection to take place during planned site visits.

Applications for the new modems and network management software can be found in almost every industry, from transportation to mining, monitoring and control in oil and gas production, pipelines and refineries, to urban surveillance. There are also numerous mobile applications such as safety devices for lone workers.

SATELLINE-3AS VHF modems comply with FCC CR47 part 90 and EN 300 113-1, -2, EN 301 489-1 and IEC 60950-1 specifications.



Versatile network management software greatly extends the functionality of SATEL's latest modem.