

SATEL-EASY+ LISÄÄMINEN 3AS NMS VERKKOON

1. Avaa NMS PC 2.1.1.32
2. Avaa haluttu NMS verkko
3. NARS-1F modeemiin, Prog on, sarjaportti tietokoneeseen
4. Modeemiin virta päälle

SATEL-EASY+ LISÄÄMINEN 3AS NMS VERKKOON

1. Klikkaa Connection
2. Change port settings
3. Aseta COM port, 38400 8N1
4. OK , OK,
5. Confirm; YES
6. Add to Network

File Edit Network Modem Link Tools Help

Open... Save system Monitoring... Connection... Detect Calculate routes

5 Network connection settings

Port settings Additional settings

Connect using

- A serial port on this machine
- A serial port on another machine on the internet running SATEL Serial Server
- Direct connection to a TCP/IP port

IP Address localhost IP Port 55555

Serial Port Settings

Serial Port Settings

Serial Settings

Serial Port COM1

Speed 9600

Data Bits 2400

Parity 4800

9600

19200

38400

57600

115200

OK Cancel

Change port settings

Confirm

Detect connected modem?

Yes No

Unknown Modem Found

New modem was found in localhost

Serial number: 2037000187

You can either associate the connected modem with one of the already existing modems, or add a new modem.

Modem	Serial Number
Visentin Regven	1729000144
Master Nostro	1729000145

Use Selected

Add To Network

Test connection Not tested yet

OK Cancel

SATEL-EASY+ LISÄÄMINEN 3AS NMS VERKKOON

1. Confirm=>Yes
2. Progress
3. OK

The screenshot displays a software interface with three main components:

- Confirm Dialog:** A dialog box titled "Confirm" with a close button (X) in the top right. It contains an information icon (i) and the following text:
The new modem is not compatible with the network's Default modem settings:
CONFLICT: Channel Spacing in default modem: 12.5 kHz in new modem: 25 kHz
CONFLICT: Radio Channel Width in default modem: 12.5 kHz in new modem: 25 kHz
CONFLICT: Modem Model in default modem: 3AS EPIC NMS in new modem: SATEL-EASy+
Below the text is the question "Do you still want to add the modem?". A "Yes" button is highlighted with a red box.
- Progress Bar:** A green progress bar is shown, labeled "Finished".
- Details Window:** A window titled "Details" contains the text "Connected modem is Modem 2 (Serial Nbr 2037000187)".
- Secondary Progress Dialog:** A smaller dialog box titled "Progress" is overlaid on the right. It shows a green progress bar and the text "Downloading settings". An "Ok" button is visible at the bottom right of this dialog.
- Main Dialog Buttons:** At the bottom of the main interface, an "Ok" button is highlighted with a red box.

SATEL-EASY+ LISÄÄMINEN 3AS NMS VERKKOON

1. Tarkista välisivulta advanced settings and control, kohta Calibration: Radion kaistanleveys vanhan verkon mukaan joko 25 kHz tai 12.5 kHz
2. Tarkista basic settings sivulta modeemin sarjaporttiasetukset, että ne ovat samoin päätelaitteen kanssa

The screenshot displays the SATEL-EASY+ software interface. On the left, a tree view shows the project structure: Prove > Settings > Design > Modems > Modem 2. The main window shows the 'Advanced settings and control' tab for 'Modem 2'. The 'Calibration' section is expanded, showing the 'Selected Channel Width' set to 25 kHz. Other settings include 'FTP Start Using New File' (0), 'Get All Values' (Yes), 'Initialize Radio' (No), 'Number of supported values' (268), and 'Number of value blocks' (14). The 'Synchronize' button and 'Last Sync Date: 29.10.2020 9.46.51' are visible at the top.

Name	Value	Update
FTP Start Using New File	0	9.46.51
Get All Values	Yes	9.46.51
Initialize Radio	No	9.46.51
Number of supported values	268	9.46.51
Number of value blocks	14	9.46.51
Calibration		
Selected Channel Width	25 kHz	9.46.51

SATEL-EASY+ LISÄÄMINEN 3AS NMS VERKKOON

1. Tämän jälkeen toimitaan To Do list mukaiset toiminnot ja lopuksi Master modeemin ja uuden modeemin synkronoinnit

To-do list of Prove

1 Set Terminal of Modem 2

2 Choose settings for Modem 2

3 Add link to Modem 2

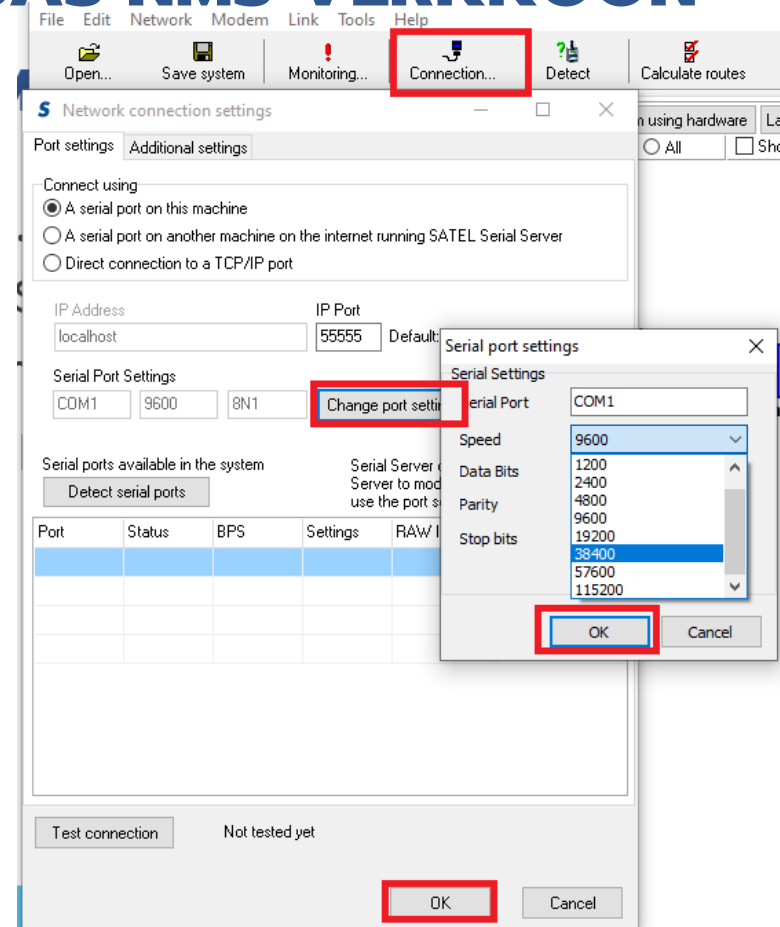
4 Calculate Routes

5 Synchronize Modem 2

6 Save the system

SATEL-EASY+ LISÄÄMINEN 3AS NMS VERKKOON

1. Jos on käytettävissä YC0301 CRS-NMS kaapeli, sarjaporttiasetukseen valitaan 115200 baud, joka on oletusarvo tai asetettu portin 2 NMS diagnostiikkaportin asetus.



UUSI NMS PC 2.1.1.32M

Lataa tiedosto :

https://www.dropbox.com/sh/hfsz3ihga0kw0ry/AADOF2JKJ_DfH7xellbXzpwca?dl=0

Tässä versiossa on tarvittavat muutokset SATEL- EASy+ varten.

SATEL SERIAL SERVER

Ajoitus on erittäin kriittinen SATEL-EASy+ ja tietokoneen välillä. Siksi voidaan joutua muuttamaan serial server timeout asetusta tarpeen mukaan:

-9600 baud, timeout 10000ms

-38400&115200 baud, timeout 5000-6000ms

Virheilmoitus väärän Timeout asetuksen kanssa:

