



# **SATEL NMS PC USER MANUAL**

**SATEL NMS PC Version 2.1.1.32  
User Manual Version 2.7**



## Table of contents

<b>TABLE OF CONTENTS.....</b>	<b>2</b>
<b>1 INTRODUCTION .....</b>	<b>6</b>
<b>2 SAFETY INSTRUCTIONS .....</b>	<b>7</b>
<b>3 NMS FUNDAMENTALS .....</b>	<b>8</b>
<b>3.1 General NMS concepts.....</b>	<b>8</b>
3.1.1 Performance management.....	8
3.1.2 Configuration management .....	9
3.1.3 Fault management .....	9
<b>3.2 SATEL NMS.....</b>	<b>9</b>
3.2.1 Features.....	9
3.2.2 Components.....	10
3.2.3 Software .....	10
3.2.4 NMS Protocol .....	11
<b>4 GETTING STARTED.....</b>	<b>13</b>
<b>4.1 Quick start .....</b>	<b>13</b>
4.1.1 Next steps.....	13
<b>4.2 Installation .....</b>	<b>14</b>
4.2.1 File types of SATEL NMS PC .....	14
<b>4.3 Connecting the modems.....</b>	<b>15</b>
4.3.1 Serial ports and functions .....	15
4.3.2 Connections during network setup .....	15
4.3.3 Connections in a deployed system.....	17
4.3.4 Other connection types .....	18
4.3.5 Connection checklist.....	18
4.3.6 TCP/IP Connections .....	19
<b>5 DESIGNING RADIO SYSTEMS AND NETWORKS.....</b>	<b>21</b>
<b>5.1 General notes about networks in SATEL NMS PC.....</b>	<b>21</b>
<b>5.2 Routing modes .....</b>	<b>21</b>
5.2.1 NMS Routing .....	21

<b>5.3</b>	<b>Essential network information checklist .....</b>	<b>22</b>
5.3.1	Creating a simple Network .....	24
5.3.2	Adding modems to an existing network.....	26
5.3.3	Defining Terminal Addresses .....	27
5.3.4	Protocol example: I-LINK Protocol .....	28
5.3.5	Generating Routing Tables .....	29
5.3.6	Transmitting Settings to the Modems .....	29
5.3.7	Testing the network .....	30
<b>6</b>	<b>SATEL NMS PC SETUP.....</b>	<b>31</b>
<b>6.1</b>	<b>Overview .....</b>	<b>31</b>
<b>6.2</b>	<b>Common tasks .....</b>	<b>31</b>
6.2.1	Creating a new network .....	31
6.2.2	Adding a radio modem substation or repeater to an existing network.....	32
6.2.3	Replacing a deployed broken radio modem with a spare .....	32
6.2.4	Setting up a redundant master modem.....	32
<b>6.3</b>	<b>Main window .....</b>	<b>33</b>
<b>6.4</b>	<b>To-do list .....</b>	<b>35</b>
<b>6.5</b>	<b>Menu Commands.....</b>	<b>35</b>
6.5.1	Context menu .....	36
6.5.2	File Menu .....	37
6.5.3	Edit menu .....	38
6.5.4	Network menu .....	38
6.5.5	Modem menu.....	40
6.5.6	Link menu .....	42
6.5.7	Tools menu .....	43
6.5.8	Help menu .....	44
<b>6.6</b>	<b>Toolbar.....</b>	<b>44</b>
<b>6.7</b>	<b>Setup views .....</b>	<b>45</b>
6.7.1	Empty system view .....	45
6.7.2	Network info view.....	47
6.7.3	Network settings view .....	48
6.7.4	Network design view.....	54
6.7.5	Modem list view.....	56
6.7.6	Modem settings view.....	58
6.7.7	CommLog view .....	66
<b>6.8</b>	<b>Windows and dialogs .....</b>	<b>67</b>
6.8.1	Connection settings window .....	67

6.8.2	Unknown modem address dialog .....	71
6.8.3	Over-the-air radio settings change window .....	72
6.8.4	Encryption keys window .....	75
<b>6.9</b>	<b>Monitoring Settings view .....</b>	<b>77</b>
6.9.1	Polling Settings tab .....	79
6.9.2	Trigger Settings tab .....	85
6.9.3	Action Settings tab .....	89
<b>7</b>	<b>SATEL NMS PC MONITORING .....</b>	<b>94</b>
<b>7.1</b>	<b>Overview .....</b>	<b>94</b>
<b>7.2</b>	<b>Common tasks .....</b>	<b>94</b>
7.2.1	Starting the program .....	94
7.2.2	Viewing diagnostics .....	95
<b>7.3</b>	<b>Main window .....</b>	<b>95</b>
<b>7.4</b>	<b>Menu commands .....</b>	<b>96</b>
7.4.1	File Menu .....	96
7.4.2	Monitoring menu .....	98
<b>7.5</b>	<b>Monitoring views .....</b>	<b>98</b>
7.5.1	Link Map tab .....	98
7.5.2	Trend Graphs tab .....	100
7.5.3	Log tab .....	102
7.5.4	Status tab .....	104
7.5.5	Alarms tab .....	104
7.5.6	Triggers .....	105
7.5.7	Actions .....	106
<b>7.6</b>	<b>Troubleshooting .....</b>	<b>106</b>
<b>8</b>	<b>SATEL SERIAL SERVER .....</b>	<b>108</b>
<b>8.1</b>	<b>Overview .....</b>	<b>108</b>
<b>8.2</b>	<b>Common tasks .....</b>	<b>110</b>
8.2.1	Accessing the Serial Server User Interface .....	110
8.2.2	Using serial ports of another computer .....	110
8.2.3	Troubleshooting serial port problems .....	111
8.2.4	Command line use .....	111
<b>8.3</b>	<b>Server views .....</b>	<b>111</b>
8.3.1	Server Log .....	111

8.3.2	Serial port list .....	111
8.3.3	Communication Settings .....	114
8.3.4	Additional Settings .....	115
<b>9</b>	<b>SATEL PACKET FILTER EDITOR .....</b>	<b>117</b>
<b>10</b>	<b>LOG FILES .....</b>	<b>118</b>
<b>10.1</b>	<b>Log types .....</b>	<b>118</b>
10.1.1	Monitoring traffic log.....	119
10.1.2	Monitoring trigger log .....	121
10.1.3	Monitoring alarm log .....	121
10.1.4	Monitoring action log .....	122
10.1.5	Custom User log .....	122
10.1.6	Serial server log.....	122
10.1.7	Comm Log .....	122
<b>11</b>	<b>EXAMPLES.....</b>	<b>123</b>
<b>11.1</b>	<b>Custom Log File: Example Trigger and Action definitions .....</b>	<b>123</b>
11.1.1	Polling settings .....	123
11.1.2	Actions.....	123
11.1.3	Trigger settings .....	124
11.1.4	Example log file .....	124
11.1.5	Notes .....	126
<b>11.2</b>	<b>Send email example: Action Definitions .....</b>	<b>126</b>
11.2.1	Preparation .....	126
11.2.2	Action setting to send email .....	126

## **1 INTRODUCTION**

SATEL NMS PC is a software package designed by SATEL Oy to assist in the configuration, monitoring and diagnostics of radio modem networks consisting of equipment manufactured by SATEL Oy. The program works in Windows® XP Windows® Vista or Windows7 operating systems.

SATEL NMS PC allows users to define their system as a list of networks and the constituting modems. Each network has exactly one Master modem and several substations and optional repeaters. The networks may be viewed as a list of modems or a graphical representation of linked modems. Also available are data about communication traffic, diagnostic information and alarms. Modem settings can be accessed and modified both online and locally. Automatic features are provided to assist in settings management, e.g. automatic generation of routing settings.

Note: This User's Manual describes essential features and functions of the SATEL NMS PC software only. Information relating to radio network design or technical details of the different SATEL radio modem models, including the recommended settings, can be found in the manuals delivered with each product.

It is recommended that this SATEL NMS PC manual be used in conjunction with the appropriate radio modem manual for your installation.

This User Manual applies to SATEL NMS PC Version 2.1.1.32

## **2 SAFETY INSTRUCTIONS**

All rights to this manual are owned solely by SATEL OY (later called also SATEL). All rights reserved. The copying of this manual without the written permission from the owner of the rights by printing, copying, recording or by any other means or the full or partial translation of the manual to any other language including all programming languages using any electrical, mechanical, magnetic, optical, manual or other methods or devices is forbidden.

SATEL reserves the right to change the technical specifications or functions of its products or to discontinue the manufacture of any of its products or to discontinue the support of any of its products without any written announcement and urges its customers to ensure, that the information at their disposal is valid.

SATEL software and programs are delivered "as is". The manufacturer does not grant any kind of warranty including guarantees on saleability and guarantees pertaining to applicability to a certain application. Under no circumstances is the manufacturer or the developer of a program responsible for any possible damages caused by the use of a program. The names of the programs as well as all copyrights relating to the programs are the sole property of SATEL. Any transfer, licensing to a third party, leasing, renting, transportation, copying, editing, translating, modifying into another programming language or reverse engineering for any intent is forbidden without the written consent of SATEL.

SATEL PRODUCTS HAVE NOT BEEN DESIGNED, INTENDED NOR INSPECTED TO BE USED IN ANY LIFE SUPPORT RELATED DEVICE OR SYSTEM RELATED FUNCTION NOR AS A PART OF ANY OTHER CRITICAL SYSTEM AND ARE GRANTED NO FUNCTIONAL WARRANTY IF THEY ARE USED IN ANY OF THE APPLICATIONS MENTIONED.

Salo, FINLAND 2020



## **3 NMS FUNDAMENTALS**

This chapter gives basic knowledge about NMS in general and SATEL NMS in particular.

### **3.1 General NMS concepts**

NMS stands for Network Management System. Network management is typically defined as follows:

*Network management is the execution of the set of functions required for controlling, planning, allocating, deploying, coordinating, and monitoring the resources of a network.*

Network management can be further divided into five conceptual areas (The ISO Network Management Model):

- Performance management
- Configuration management
- Accounting management
- Fault management
- Security management

Of these areas, Security and Accounting management are used to control user accounts of the managed devices, which is irrelevant in the case of SATELLINE radio modems. The other three areas, however, are relevant to radio modems, and are discussed below.

#### **3.1.1 Performance management**

The goal of performance management is to measure network performance and make available settings and controls so that performance can be maintained at an acceptable level. Performance management involves three main steps.

- Performance data is gathered.
- Data is analyzed to determine baseline (normal) operation levels.
- Appropriate performance thresholds are determined for each variable so that exceeding these thresholds indicates a problem worthy of attention.

SATEL NMS supports performance management by monitoring the operation variables of radio modems, such as signal strength (RSSI), voltage and temperature and allowing the user to define alarm thresholds for each variable.

### **3.1.2 Configuration management**

The goal of configuration management is to monitor network and system configuration information so that the effects on network operation of various versions of hardware and software elements can be tracked and managed. Each network device has a variety of version information, such as hardware or software version numbers, associated with it.

Configuration management stores this information for easy access. When a problem occurs, the stored information can be searched for clues that may help solve the problem. The above definition of configuration management has been originally created in an internetworking environment. In a radio modem network, the version numbers of hardware and software can be tracked, and SATEL NMS makes these available. However, SATEL NMS also allows changes to be made to the settings of the managed devices' (i.e. the radio modems') settings, which is a task usually delegated to other protocols and methods in the IP world. This feature is called Remote Configuration in SATEL NMS.

### **3.1.3 Fault management**

The goal of fault management is to detect, log, notify users of and (to the extent possible) automatically fix network problems to keep the network running effectively. Fault management involves first determining symptoms and isolating the problem. Then the problem is fixed, and the solution is tested on all important subsystems. Finally, the detection and resolution of the problem is recorded.

SATEL NMS provides the basic tools to detect problems and make changes to the network settings from a centralized location, thus simplifying the fault management process of your organization.

## **3.2 SATEL NMS**

SATEL NMS is a comprehensive system for managing SATEL radio modem networks. It includes many software modules and interfaces, running on several platforms.

### **3.2.1 Features**

The main features of SATEL NMS are:

Non-intrusive operation

- Remote configuration
- Monitoring of network operating parameters
- Network design tool

### 3.2.2 Components

SATEL NMS consists of a set of interfaces and features offered by certain SATEL radio modem models, including SATEL-EASy+, SATELLAR XT 5R, SATELLINE-3AS(d) NMS, SATELLINE-3AS(d) Epic (C) NMS and SATELLINE-3AS(d) VHF. Using SATEL NMS it is possible to monitor the deployed radio modem network for certain diagnostic parameters and, if necessary, make changes to the modems' settings online.

The NMS Solution provided by SATEL consists of the radio modems, which support the NMS Protocol, and the SATEL NMS PC software package, which provides setup and monitoring functions.

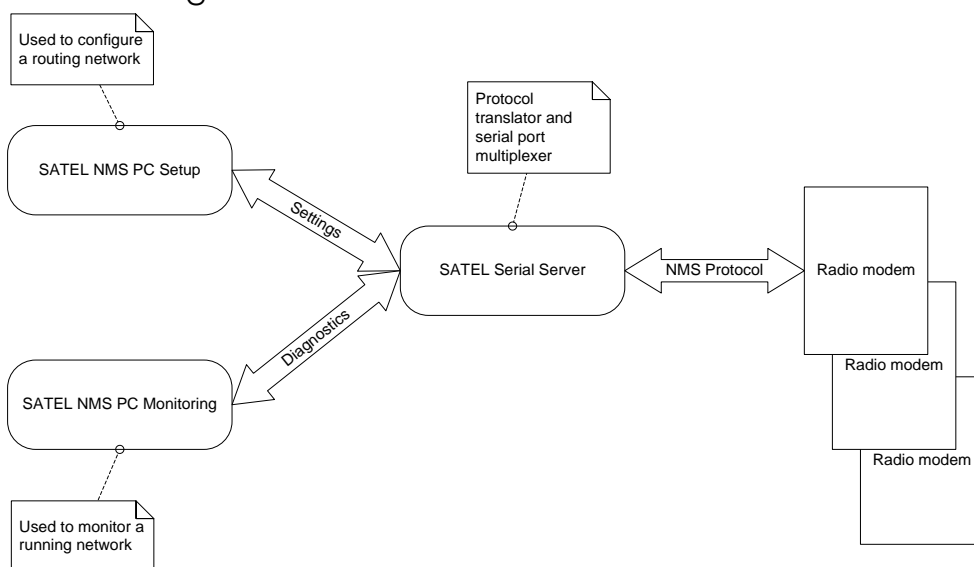


Figure 1: Components of the SATEL NMS solution

### 3.2.3 Software

The SATEL NMS PC software package contains four Windows applications: *SATEL NMS PC*, *SATEL NMS PC Monitoring*, *SATEL Serial Server* and *Packet Filter Editor*.

*SATEL NMS PC* is used to design the modem network and upload the initial settings to the modems. After deployment, the software can be used to make changes to the settings remotely by radio connection. Also, routine maintenance tasks such as replacing or adding a modem to the network, running communication tests etc. are possible using the software.

*SATEL NMS PC Monitoring* is used to monitor a deployed radio modem network while it is in operation. It provides logging of network parameters and events displays trend graphs and can react to events by sending alarms and running external commands.

*SATEL Serial Server* provides the other applications multiplexed access to the serial ports of the computer.

*Packet Filter Editor* is used to define packet filters needed for custom data protocol support.

### **3.2.4 NMS Protocol**

The basic method of controlling the SATEL NMS features is through a modem's diagnostics port, which is one of its serial ports set to operate in the diagnostic (NMS) mode. The NMS port accepts binary NMS commands. This is called the *NMS Protocol*.

Since the NMS Protocol is a binary protocol, it is not designed for human eyes. Another protocol, called the *SATEL Serial Server Command Protocol* (S3CP) is an ASCII protocol, and is suited for interactive command line operation as well as software-controlled operations. However, the modems currently in production do not directly support S3CP. Instead *SATEL Serial Server* (part of the SATEL NMS PC installation), which can translate S3CP to the NMS Protocol and back.

The above protocols allow access to all the diagnostic parameters of the modems in the radio network. The RAM memory of the modems being scarce, the modems do not generally store large log files themselves. Instead, diagnostics are polled from the radio modems at regular intervals and stored in a central location, usually a Windows PC running SATEL NMS PC Monitoring.

#### **3.2.4.1 NMS ID**

NMSID (or NMS ID) is the *identifier* of a setting, diagnostic value or command that can be sent to or received from a modem. Every possible setting etc. has its own identifier. For example, the NMSID of transmitted power of the radio in SATELLINE 3AS(d) NMS is 1.267.

The NMSID consists of two numbers separated by a period character. The first number is the access level (level 1 settings are user settings). The second number is the actual identifier.

The NMSIDs supported by a modem are listed in the user manual of the modem. You can also retrieve the list from the modem using SATEL NMS PC.

#### **3.2.4.2 Message sending modes (ONLINE and OFFLINE)**

SATEL NMS can send messages in one of two modes.

If the mode is OFFLINE, the packet will be sent immediately to the radio network. If there is already a packet, such as a user data packet in the modem network, and

the modem network contains long repeater chains, the new packet may collide with the data packet. This is referred to as the Offline operation mode, because it is best used when the user system is offline and no user data is being transmitted, but NMS messages are.

If the mode is ONLINE, the packet will be placed in the master modem's outgoing NMS message buffer and wait for a user data packet to be sent *to the same address as the new NMS packet*. When such a user packet is sent, the NMS frame is attached and sent inside the same transmission, thus avoiding collisions. This is known as the Online mode, as it can only be used when the user system is Online. *If there is no user data traffic, NMS frames will not be sent at all in this mode!* This mode depends on the user system to poll each modem in turn. If a modem is not contacted by the user protocol, NMS packets are not able to reach the modem either.

This mode should be used when there is much data traffic to all modems and data packet loss due to NMS versus DATA packet collisions is not acceptable.

### **3.2.4.3 Message addressing modes (Normal and ANYCAST)**

Normally NMS Messages are sent to the recipient by setting the DADDR field of the message. DADDR must correspond to the Modem Address Setting (NMSID 1.398) of the destination modem. For example, if the destination modem's address setting is 2, the outgoing NMS message must be sent to destination address (DADDR) 2.

In the specific case of ONLINE Monitoring this normal method of delivering messages can result in long delays. Consider a large network consisting of 100 radio modems operating under a single master. Assume the system is a SCADA system and the data protocol is a polling protocol such as IEC 60870, with one RTU per radio modem. If the SCADA master uses about 1 second to query each RTU, the whole polling sequence takes 1-2 minutes.

Now if an NMS Monitoring message is sent to a modem X in the network, it is possible the outgoing message will have to wait in the buffer for up to 2 minutes before being sent. This happens because NMS Monitoring is unable to synchronize its polling sequence with the data polling sequence. This can cause significant delays to Monitoring, with some modems seeming to drop out altogether.

The solution is to use the "Anycast" addressing mode. In this mode, outgoing NMS messages are not sent to any specific address; instead they go to whichever address the next data packet is going to. The NMS response message will have address information, so the original sender (usually NMS PC Monitoring) will know which modem the response came from. This way a network of modems can be monitored efficiently.

Anycast is not available for SATELLAR XT 5R modems.

## 4 GETTING STARTED

SATEL NMS PC can be used to

- Design a network of SATEL NMS modems
- Apply settings to SATEL modems
- Remotely change settings of SATEL modems
- Monitor a network of SATEL modems

### 4.1 Quick start

To get started quickly with your NMS modems:

1. Install SATEL NMS PC to your Windows XP, Windows 7 or Windows10 computer.
2. Connect one of your modems to the PC. (See 4.2 for details)
3. Start the program.
4. Click the *New network button*.
5. Follow the To-do list, clicking each item in turn, to create your network.
6. Once you have completed the To-do list, test your network by running the *NMS Radio Connections* test.
7. You can start monitoring the network by clicking *Monitoring...* and then *Start SATEL NMS PC Monitoring* button.

See Chapter 5.9 for more detailed instructions.

#### 4.1.1 Next steps

Once you have successfully tested the modems and monitored the network in OFFLINE mode, you can proceed to connect your own equipment to the modems. The Master modem needs to be connected both to your master device and to SATEL NMS PC, using a two-port serial cable. If you need to change the serial port settings of the modems, you can do so using SATEL NMS PC through radio (Remote Configuration).

Please read the rest of this user manual carefully. You can also contact SATEL technical support, who will be happy to help you in case of problems.

## 4.2 Installation

SATEL NMS PC is installed by running the installer program. This installer copies all files into the Program folder, defaulting to {the Windows 'Program Files' folder} \SATEL NMS PC.

For example: *C:\Program files\SATEL NMS PC* in Windows Vista, Windows 7 and Windows 10, the default directory is *C:\Program Files(x86)\SATEL NMS PC*

### 4.2.1 File types of SATEL NMS PC

SATEL NMS PC uses a few extra files and file types, summarized in the following table.

File extension or name	Location	File type	Programs	Explanation
.saxd	<i>any</i>	Satel Network Configuration file	SATEL NMS PC <i>and</i> Monitoring	This file contains a saved system, including all networks and modems.
.sax	<i>any</i>	SATEL XML File	SATEL NMS PC <i>and</i> Monitoring	Older version of .saxd. Loading and saving supported for compatibility reasons. Saving in .saxd format only.
.log	Install directory <i>or</i> user defined Log Directory	Log file	Monitoring	Contains network events. See chapter 6 for more information.
.xml	Install directory	Packet Filter definitions	SATEL NMS PC <i>and</i> Packet Filter Editor	Contains various data protocol definitions.
SATELNMS .ID	Install directory	NMSID definitions	All	SATELNMS.ID contains NMSID definitions. In some cases, this file might need to be updated when modem HW or FW version is updated. The version information is available in the Help->About menu of SATEL NMS PC.

**Note:** It is recommended not to alter any files manually, instead use *SATEL NMS PC* to load, modify and save the files.

### **4.3 Connecting the modems**

This user guide only addresses connections needed for the NMS system. Mounting the modems physically, connecting antennas and power supplies are explained in the modem user manual.

#### **4.3.1 Serial ports and functions**

There are two serial ports on each SATEL-EASY+, SATELLINE-3AS(d) NMS, SATELLINE-3AS(d) Epic (C) NMS or SATELLINE-3AS(d) VHF modem, Serial Port 1 and Serial Port 2. Each of these ports has three possible functions, one of which can be active at a time.

- DATA, used for user data transfer
- NMS, used for NMS protocol
- OFF

Note that only one of the ports can be a DATA port and one can be an NMS port at the same time, so for example having both ports in NMS mode at the same time is not possible.

The NARS-1F cable allows access to serial port 1. However, to access both port 1 and 2 at the same time, a two-port serial cable (for example CRS-NMS) is needed. This cable has one 15-pin connector (connected to the modem) and two 9-pin connectors, which are labelled '1' and '2', corresponding to port 1 and port 2 of the modem. *By default, the connector labelled '2' is used for NMS.*

See the modem manual for information on how to change the function of the ports.

SATELLAR XT5R modems have D9 connector for RS232. The D9 can support two serial ports of the port RS-232. A two-port serial cable for SATELLAR XT 5R RS-232 D9 is available from SATEL. SATELLAR XT 5R can also be set to accept NMS commands on the normal D9 serial port by using the function button, as explained in the SATELLAR XT 5R user manual. This is useful for initial setup using SATEL NMS PC.

#### **4.3.2 Connections during network setup**

During initial network setup, SATEL NMS PC needs an NMS PROTOCOL connection to all modems to synchronize their settings.

There are two useful ways to connect the modems during initial network setup:



1. Full operation connection
2. Programming mode setup connection (or SATELLAR XT5R function button mode 2)

See Table 1: NMS Port Connection methods for details.

Connection methods	Full operation connection	Substation data connection	Programming mode connection	NMS demo master connection	NMS demo substation connection
<b>Purpose</b>	SETUP and/or DEPLOYED master modem.	DEPLOYED substations	SETUP	DEMO	DEMO
<b>Description</b>	Serial and radio DATA and NMS connections available	Serial port DATA, NMS radio connection	Setup only, no radio connection possible	NMS serial and radio connection only	NMS radio connection only
<b>Picture</b>	Figure 2: Full operation connection		Figure 3: Programming mode connection		
<b>PROG mode</b>	NO	NO	YES *)	NO	NO
<b>Cable needed (SATELLINE)</b>	CRS-NMS	NARS-1F	NARS-1F	NARS-1F	NARS-1F or power only
<b>PORT 1 function</b>	DATA or NMS	DATA	NMS *)	NMS	any, not used
<b>PORT 2 function</b>	NMS or DATA	any, not used	any, not used	any, not used	any, not used

**Table 1: NMS Port Connection methods**

\*) Programming mode is usually used with a configuration software; SATELLINE SaTerm for SATELLINE-3AS, EASY product family (baud rate 9600) and Configuration Manager 1.15.x for SATEL-EASy+(baud rate 38400). Instead of terminal emulator software, SATEL NMS PC may be connected to the modem, as the modem will respond to NMS protocol messages while in programming mode. In this case the modem can only be configured, radio messages cannot be sent while the modem is in programming mode.

#### 4.3.2.1 Connection procedure

This procedure must be followed when swapping modems connected to the PC.

1. Power modem off

2. Disconnect previous modem
3. Connect new modem
4. Power modem on

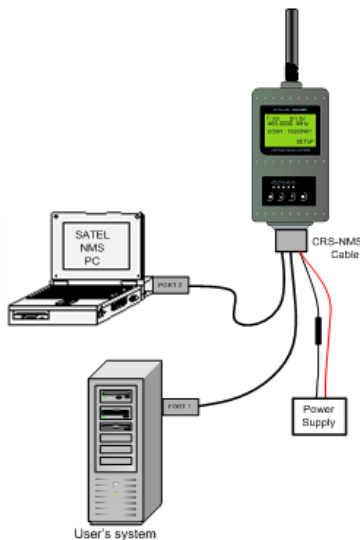


Figure 2: Full operation connections

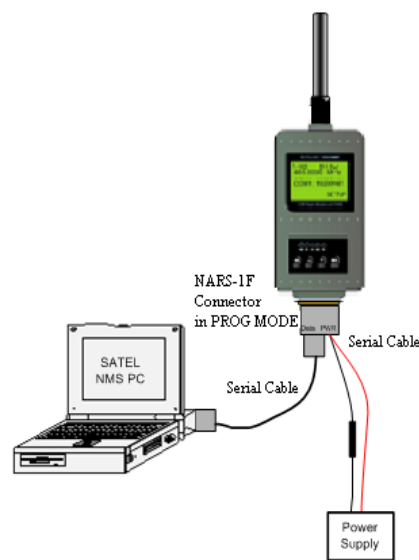


Figure 3: Programming mode connection

### 4.3.3 Connections in a deployed system

One of the modems in a deployed system is the *Master Modem* of the system. The other modems are *substations* (including *repeaters*).

The *Master Modem* is special since SATEL NMS PC software connects to the rest of the modems through it, using the radio channel. This is called remote or Over-The-Air (OTA) operation.

One serial port (typically port 1) is configured as the DATA port and the other as the NMS port, which is connected to the PC. SATEL NMS PC will connect to this serial port to send and receive NMS PROTOCOL messages from the master modem and all the substations.

A *substation* modem in a deployed network only needs a serial connection to the data terminal equipment, since all NMS commands are sent and received through the radio (OTA). (See Figure 4). The NMS port is not used in these modems, only the DATA port needs to be connected to the user equipment.

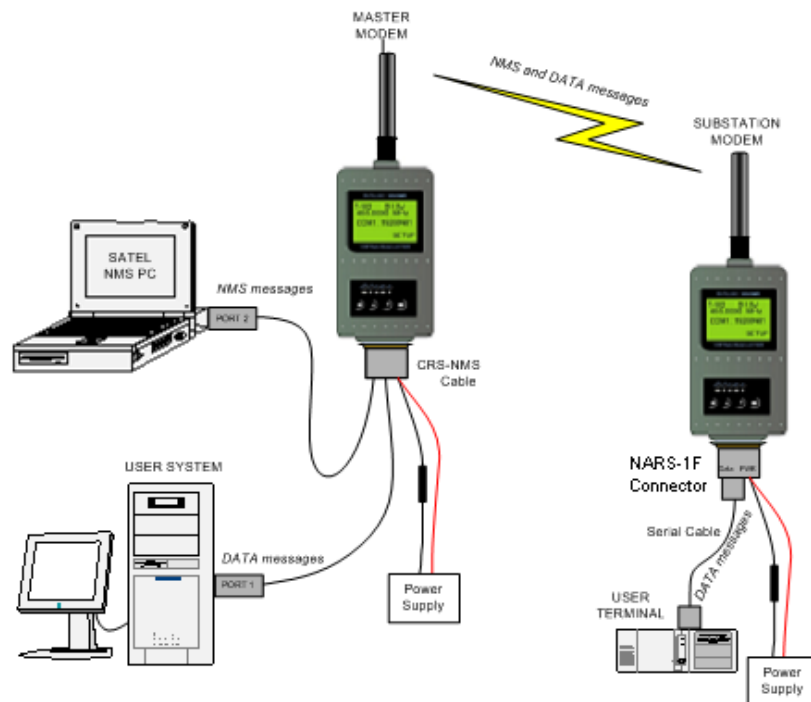


Figure 4: Serial connections in a deployed NMS network

#### 4.3.4 Other connection types

In some cases, the port configuration may need to be changed so that port 1 is used for NMS and port 2 for DATA. One such case is if the data port is in RS-485 mode. RS-485 is only supported on port 2 of SATELLINE-3AS(d) NMS, therefore data must go on port 2 and NMS on port 1.

When a two-port (CRS\_NMS) cable is not available, a regular cable (e.g. NARS-1F) may be used to *demonstrate* NMS features by setting port 1 as the NMS port on the *Master Modem*. This configuration is only usable for NMS PC demonstration purposes. User data cannot be transferred in this configuration.

#### 4.3.5 Connection checklist

To establish a connection between SATEL NMS PC and a modem, please follow the checklist below. Also see Table 1.

- 1) Make sure the modem has power
- 2) Make sure that the modem is in the appropriate operating mode.
  - a. Programming mode if you wish to change the settings of the local modem only.

- b. Normal mode if you wish to also use the remote-control features
  - c. Note that if using the CRS-NMS cable, there is no programming mode switch and the Normal mode is automatically on.
- 3) Identify the port which has been configured as the NMS port of the modem. If the modem is in programming mode, port 1 is used. In Normal mode, either port 1 or port 2 may be configured as the NMS port. If you are unsure, see the modem's setup screen or you can first connect the modem in programming mode and change the port setting before going back to normal mode.
- 4) Connect the modem's NMS port to any free serial COM port of the computer
- 5) Start SATEL NMS PC
  - a. Click the "New Network" button
- 6) The PC's serial port needs to be opened. Click the **Connect** button in SATEL NMS PC Setup. The connect window appears.
  - a. Click **Detect available COM ports**. SATEL Serial Server is started automatically.

A list of serial ports in the machine then appears in SATEL NMS PC.

    - If you have firewall software installed you might be asked to allow outgoing connections from SATEL NMS PC, or to allow SATEL Serial Server to work as a server. SATEL NMS PC does not usually connect to the Internet, but this needs to be allowed because Serial server and the other programs communicate with each other using the IP protocol in the local machine.
  - b. Select the correct port from the list and click **Test connection**. A NMS message is sent to the port to see if a modem answers. If "No response" is received, try another port or check your cables and port settings. By default, NMS modems use 9600 bps, 8N1 as the port settings. SATEL-EASY+ and SATELLAR XT 5R uses 115200 bps, 8N1.
  - c. Once the modem responds, click OK to proceed.
- 7) SATEL NMS PC Setup will ask what to do with the found modem. If you wish to create a new network using the modem, click Add and start following the To-do list. See 5.4 for more information. Otherwise you may just click Add and go the *Modem View* if you wish to examine and/or change the individual modem's settings.

#### 4.3.6 TCP/IP Connections

Instead of a serial port connection, SATEL NMS PC Monitoring and Setup are able to use a TCP/IP (Internet Protocol) connection to the master radio modem. This is

useful in case a serial cable cannot be used for some reason, such as the distance between the PC and the master modem.

In this case additional hardware is usually needed to act as a bridge between the internet and the master modem. Usually a serial port server is used.

Note that most port server hardware available come with *virtual serial port* drivers which can be installed on the PC. You may wish to use a virtual COM port instead of an IP port connection in this case. If you decide to use virtual COM ports, the connections from SATEL NMS PC programs are defined as usual with normal COM ports, see above in this chapter.

SATELLAR XT 5C can also be used to as a TCP/IP access point for NMS messages. In this case, normal TCP/IP radio traffic is not available, the network is configured using SATEL NMS PC and only the Master modem needs a CU (SATELLAR XT 5RC) The role of the CU is simply to route NMS messages to the SATELLAR XT 5R FSK network.

## 5 DESIGNING RADIO SYSTEMS AND NETWORKS

You should already have a general design ready for your network when starting to use SATEL NMS PC. SATEL NMS PC can be used to automatically calculate the routing and other settings of radio networks, but it cannot calculate link budgets or performance requirements of data traffic.

### 5.1 General notes about networks in SATEL NMS PC

In SATEL NMS PC a *system* may contain one or more *networks*. The distinction between systems and networks has been adopted to allow monitoring of multiple networks at the same time.

Each network is defined by having its own frequency, Network ID and master modem. Modems in different networks do not communicate with each other (Except in very rare cases).

A system is a collection of networks. SATEL NMS PC saves systems into .saxd files and SATEL NMS PC Monitoring may be used to monitor all networks of a full system at the same time.

### 5.2 Routing modes

The Routing mode setting controls how data is transmitted in the radio network. Currently the SATELLINE 3AS NMS modem family, SATELLAR RU and SATEL NMS PC support a routing mode called "NMS Routing" (aka Source Routing).

#### 5.2.1 NMS Routing

This mode is suitable when the DATA protocol is a polling protocol and all radio traffic is originated from and controlled by the data master station. Thus substations (RTUs) are not allowed to start sending data without being asked first. This rule is not enforced by the radio modems; it is entirely up to the data system. Breaking the rule could cause collisions on the radio channel.

SATEL NMS supports this type of routing mode using a set of features including routing tables, packet filters and terminal addresses.

##### 5.2.1.1 Routing tables

Routing tables are stored at the master modem. They are generated by SATEL NMS PC during the "Calculate Routes" operation and stored during the "Synchronize" operation.

Routing tables contain information in a row format. Each row defines the chain of modems through which a certain RTU may be reached. The modems are identified by Modem Address. The RTU is identified by a Terminal Address. The modem address chain is sent along within the radio frame so each modem (repeater) along the way knows where to send it next. When a response is sent by the RTU, the chain is reversed, and the process is repeated in inverse.

This behaviour means that routing information is only stored in the master modem. Therefore, it easy to add modems to and change routes of a network even after deployment.

To generate routing tables, the terminal addresses of RTUs must be given to SATEL NMS PC. This is done by adding "Terminal Addresses" to each substation radio modem's settings, one address per connected RTU. SATEL NMS PC uses this information to generate routing tables, which are stored in the master modem.

Note that routing tables are needed for NMS traffic to work, too. This means that even a demo network without any data traffic needs routing tables.

#### **5.2.1.2 Protocols, Packet filters and Terminal addresses**

To successfully route a data packet to the correct substation, the master modem must determine the Terminal Address of the packet. This is accomplished using Packet Filters. A Packet Filter is a firmware routine running in the Master modem, which looks at the data packet and finds the address field in the data.

The Packet Filter routine has settings to support different data protocols. Selecting a "Protocol" in SATEL NMS PC affects the Packet Filters settings of the master modem.

Repeater modems do not need to be configured with terminal addresses but may have them in case RTU's are used at the repeater stations.

### **5.3 Essential network information checklist**

The following table lists information needed while designing a network.

<b>Item</b>	<b>Explanation</b>
General system topology	How many networks will your system consists of? Each Master or Base station you have will become the Master Station of one Network. Each network has exactly one Master Modem.

Network ID	A string of 8 characters. Select a <u>unique ID</u> for each network in the system. The modems only accept radio messages sent by modems that have a matching Network ID. This prevents data from neighbouring networks operating on the same frequency from getting mixed up with each other's traffic. Note that usually neighbouring networks should have different frequencies. Network ID is an additional safety precaution.
Frequency	You will usually need to apply for a private frequency from the local authorities. Make a note of this frequency and input it into SATEL NMS PC.
Network data protocol	Which data protocol is your network using? MODBUS, IEC 60870, ANSI or SATEL I-Link, for example.  SATEL NMS PC Setup needs to know the protocol, so that correct Packet Filter settings can be loaded into the master modem. (For NMS demonstration networks without any data traffic, any protocol is fine.)
Terminal addresses	You'll need the protocol addresses of all the terminals you plan to connect using the radio modem network and information about which radio modem substation each terminal will connect to. If you are only using the modems to demonstrate NMS without actual user protocol traffic, terminal addresses still need to be defined so that routing tables are generated. SATEL NMS PC and the Master Station modem depend on the routing tables to send NMS messages to the substation modems.
Substation names	Each radio modem should be named using a descriptive name; the location where the substation is to be deployed is normally used.
Link budget	You'll need a link budget so you can select the correct TX Power settings for the modems. For desktop testing use the lowest TX Power setting possible, and switch to the proper TX Power calculated in the link budget before deploying.
FEC on or off?	FEC stands for Forward Error Correction. Enabling FEC improves data transmission reliability, at the cost of some of the data transmission capability. Please consult the modem manual for details.
Additional radio settings	SATELLAR RU has additional radio settings which must be set. Please consult the SATELLAR manual. SATEL NMS PC can be used to set the values of the settings.



### 5.3.1 Creating a simple Network

Here are step-by-step instructions for designing a network using SATEL-EASY+ modems.

- 1) Connect a modem to PC using a serial cable CRS-NMS to Port 2-NMS
- 2) Start the SATEL NMS PC Setup program
- 3) Click **New Network**
- 4) The To-do list appears. Click all the To-do list items in order. (You can also skip some steps if you want to do them in a different order). The program will ask you to input all needed settings. (See 6.4 for more about the To-do list).
  - a. Click **Name the network** and input a name for your network.
  - b. Click **Add the first modem**. The program will ask you to configure communication settings. Click OK. The Communication settings window appears.
    - i. Click **Detect available COM ports**
    - ii. Select your COM port by clicking on it on the Available COM ports list.
    - iii. Click **Test Connection**. If your modem is detected, its serial number will appear beside the Test Connection button. Otherwise a Timeout or error is reported. Check your cable and port settings on both the modem and PC.
    - iv. EASY+ modem default serial port settings are 115200, 8, N,1.
    - v. Once your modem responds when you click test connection, close the window by clicking **OK**
    - vi. Wait while settings are loaded.
  - c. Click **Choose network settings**
    - i. If the Frequency is incorrect, input the correct frequency by clicking **Change...**
    - ii. Input your Network ID by clicking **Change ID**
    - iii. Set FEC on or off
    - iv. Select the Protocol by clicking **Select Protocol**
    - v. Ensure the NMS Message transfer mode in **OFFLINE** at first. Change it to ONLINE once your data traffic is running.
  - d. Click **Choose settings for Master Station**
    - i. Change name if you wish

- ii. Select TX Power
    - iii. NO Terminal addresses are needed for the Master station
    - iv. Choose serial port settings
  - e. Click **Add a new modem**
  - f. Click **Choose settings for Modem 2**
    - i. Change name if you wish
    - ii. Select TX Power
    - iii. Define one or more terminal addresses, unless this is a Repeater with no connected terminals. There must be at least one terminal at the end of each repeater chain. Use "dummy" terminal addresses if you don't have any real ones (if this is demo network, for example).
    - iv. Choose serial port settings
  - g. Click **Add link to Master Station**
    - i. Draw a link to the other modem
  - h. Click **Calculate Routes**
    - i. Do not Synchronize yet
  - i. Click **Name the System**
  - j. Click **Save the system**
  - k. Click **Synchronize Master Station**
    - i. Wait while master station modem is synchronized
  - l. Click **Synchronize Modem 2**
    - i. Since the modem connected is the master station, the program will display the *Unknown modem address* dialog.
    - ii. Connect your second modem to the serial port (observing the proper connection procedure in 4.3.2.1) and click OK.
    - iii. The program will display the Serial number of the modem and asks if you wish to associate the modem. Click Yes
    - iv. Wait while the modem is synchronized.
  - m. Click **Save the system**
- 5) Now you have a two-modem network properly configured.
- 6) Re-connect your master modem and click the **Detect** button in the toolbar to ensure it is connected.

- 7) Go to the *Network info view* by clicking the network's name in the *System tree view*
- 8) Using another cable, ensure your other modem has power. Attach antennas to both modems.
- 9) Test the network by clicking **NMS Radio connections** under the *Tests* group box.
  - a. Both modems should respond.
- 10) Now your two-modem system is configured and tested! Next steps are
  - a. Add more modems
  - b. Configure Monitoring settings
  - c. Run extensive desktop tests
  - d. Deploy the network

### 5.3.2 Adding modems to an existing network

Modems may be added by clicking “**Add Modem using defaults**” in *Network design view* (6.7.4). The settings of the new modem are copied from the Default Modem settings (see below). In addition, SATEL NMS PC Setup will manage the settings so that network-wide settings such as Frequencies and FEC are the same in all modems.

#### Using the Default Modem settings

Use the Default Modem settings view to ensure that all modems will have the same general settings. Go to the *Default Modem view*, by clicking on **Default modem** under **Settings** in the *system tree view*.

You can change the default modem settings to values which should be common to all modems in the network.

Now whenever you create a modem using the **Add Modem using defaults** command, it will have these settings already selected.

After adding the modem, add a logical radio link to the Master Station, or if a direct link to the master is not possible, nearest repeater.

In the Design view:

- Select the modem icon
- Right click
- Select **add link**
- Click the target modem

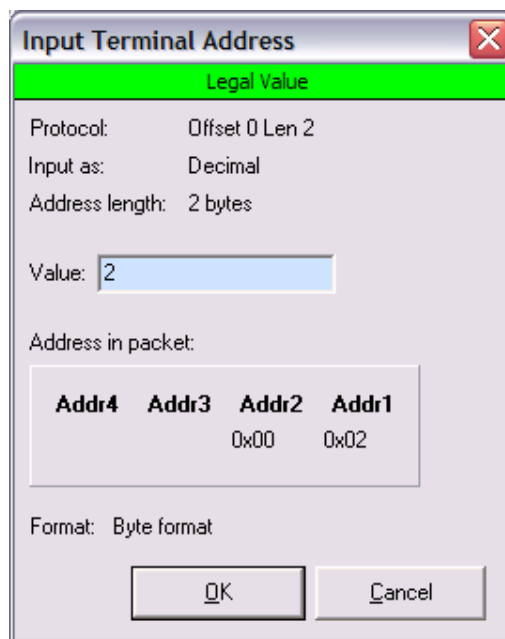
### 5.3.3 Defining Terminal Addresses

For routing to work, each modem must have a terminal address, or several addresses in case there are several user terminals connected to the data port using for example an RS-485 adapter. These correspond to the actual addresses of the user's protocol. SATEL NMS PC will use the defined terminal addresses to generate the routing tables of the master modem.

Note that, in NMS Routing mode, although the terminal addresses are defined in the Modem View for each substation modem, the terminal addresses are only saved to the master modem in the form of the routing tables. Therefore, changing a terminal address does not necessitate updating of the substation modem settings, only the master modems' settings.

The Terminal addresses are defined in the *Basic Settings tab* of **Modem View**. Select each modem in turn on the tree view under the Modem List item and define their terminal address(es) by clicking on the **"Add..."** button under the Terminal Addresses heading.

The terminal addresses are defined using the Input Terminal Address window (Figure 5), which appears when the "Add..." button is clicked.



The dialog box titled "Input Terminal Address" has a close button (X) in the top right corner. Below the title bar is a green bar with the text "Legal Value". The main area contains the following fields and labels:

- Protocol: Offset 0 Len 2
- Input as: Decimal
- Address length: 2 bytes
- Value: 2 (in a text box)
- Address in packet: A table with four columns: Addr4, Addr3, Addr2, Addr1. Below Addr2 and Addr1 are the values 0x00 and 0x02 respectively.
- Format: Byte format
- Buttons: OK and Cancel

**Figure 5: Input Terminal Address window**

The green/yellow/red bar located on top indicates if the address you are typing is legal for the selected protocol filter.

The format of the number you are inputting; Decimal, Hexadecimal or ASCII, depends on the selected protocol. The length of the address depends on the

protocol that is in use. The maximum length supported by SATEL NMS is four bytes. If a protocol has a four-byte address, then:

- In decimal mode, values from 0 to 4294967295 are accepted.
- In hexadecimal mode, values range from 0 to FFFFFFFF.
- In ASCII mode from one to four characters are accepted.

In all cases the value is displayed in Hexadecimal format in the Address in packet box. Addr1, Addr2 etc. refer to the packet filter address bytes. This information can be useful when defining custom protocol filters using Filter Editor.

You must take care to input the address of the equipment that will be actually connected to the modem in question once the network is deployed.

A terminal address may be changed by double-clicking on it in the list in **Modem View**.

#### 5.3.4 Protocol example: I-LINK Protocol

The SATEL I-LINK protocol is an ASCII protocol, i.e. it uses human-readable characters in the protocol packets. To use SATEL NMS with I-LINK as the DATA protocol, remember to select the I-LINK protocol in the **Main Network View**.

The slave address is input in decimal format.

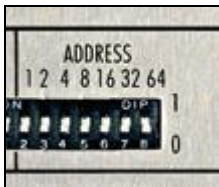


Figure 6: I-Link address switches

The address set using the dipswitches of the **I-LINK 100 I/O Converter** must be converted to a decimal number. For example if dipswitches "64", "16" and "1" are selected, the address is  $64+16+1 = 81$  in decimal format. See the I-LINK manual for details about the address format.

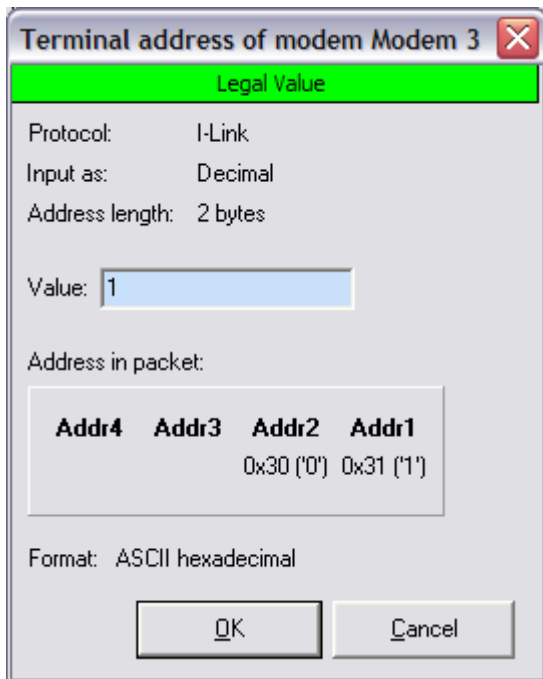


Figure 7: Terminal address input window

For example, Address 1 will appear as Addr2=0x30('0') and Addr1=0x31('1'), because character '0' equals 30H and character '1' equals 31H in the ASCII character coding system.

### 5.3.5 Generating Routing Tables

Click the **Calculate Routes** button in the toolbar or in the To-do list. A message box will appear to inform you what settings were automatically changed. The Routing tables of the Master modem are generated based on the links drawn between modems and on the terminal addresses defined in the Modem View. If you change either of these, click **Calculate Routes** again.

Routing tables are saved to the master modem when it is synchronized.

### 5.3.6 Transmitting Settings to the Modems

All changes to the network so far have only affected the settings within SATEL NMS PC. Now the settings are to be transmitted to the modems. To accomplish this, each modem in turn is connected to the PC and their settings are then uploaded from the PC into the modem.

- 1) Go to the modem's Modem settings view
- 2) Click Synchronize

- 3) If SATEL NMS PC has not connected to that modem before, it shows the Unknown modem address dialog (See 6.8.2). In this case, connect your modem and click OK.
- 4) Wait while the modem is synchronized.

Repeat the above sequence for each modem.

**If at any time you are not sure of which modem is connected to SATEL NMS, click the Detect button.**

### **5.3.7 Testing the network**

First connect the Master modem to the PC and click Detect. This ensures the Master modem is connected.

For further testing, a Ping test is provided in the Tools menu. Enter number of messages to send and target address. SATEL NMS PC will send RSSI requests to the modem address and measure the time it takes the modem to answer.

There are also other tests in the Tools menu, and SATEL NMS PC Monitoring may also be used to test the network.

## 6 SATEL NMS PC SETUP

This chapter explains how to use SATEL NMS PC Setup. At the beginning of the chapter you will find an overview of the program features and a list of common tasks. Towards the end of the chapter all the commands, views and windows of the program are explained.

### 6.1 Overview

SATEL NMS PC Setup is a network administrator's tool, and it allows the user to:

- Set up a radio modem network initially
  - Draw the network using modem icons and link arrows
  - Automatically determine radio modem settings for each modem of the network
  - Upload settings to each radio modem individually
- Run a series of tests on a radio modem network
- Change radio modem settings remotely using the radio connection
- Add radio modems into the network
- Replace radio modem hardware
- Configure monitoring settings for SATEL NMS PC Monitoring
- Save and load radio modem system files
- Export a device list

### 6.2 Common tasks

This subchapter lists some common tasks and how to perform them. Refer to later sub-chapters for explanation of the different windows, views, commands etc. of the program.

#### 6.2.1 Creating a new network

**Software required:** SATEL NMS PC Setup

Setting up a network of SATEL NMS-capable modems using SATEL NMS PC Setup is relatively easy. Broadly speaking, the process consists of the following steps.

1. Acquire at least two radio modems and necessary cabling



2. Install and start SATEL NMS PC Setup
3. Create a new network in SATEL NMS PC Setup
4. Follow the To-do list in the lower left-hand-corner of the program window
  - a. The To-do list consists of task buttons which you click in order, and the program then asks you to input certain data and settings related to each task to create your network.
  - b. Finally, the system file is saved to disk and the modem settings are synchronized one modem at a time
5. Test your network's radio connections in your lab
6. Deploy your network

### 6.2.2 Adding a radio modem substation or repeater to an existing network

**Software required:** SATEL NMS PC Setup

Go to *Design View* and click **New Modem**. Then follow the *To-do list* to finalize settings. (Add necessary links to/from the new modem. Add a terminal address. Select serial port settings. Click **Calculate Routes**. Synchronize the Master and the new modem)

Finally test the new modem before deploying.

### 6.2.3 Replacing a deployed broken radio modem with a spare

**Software required:** SATEL NMS PC Setup

You need to have access to the .saxd file for the system which the broken modem is part of.

Load the .saxd file. Then connect the spare modem to your PC and go to the *Modem View* of the broken radio modem. Click **Replace Modem** and follow the instructions. Once the spare modem has been synchronized, test it. Finally go to your site to remove the broken modem and install the spare modem.

### 6.2.4 Setting up a redundant master modem

**Software required:** SATEL NMS PC Setup

**Purpose:** Configure settings so that NMS Monitoring is able to cope with a radio modem network where the master station is redundant, i.e. there are two master radio modems, one of which is the primary device, while the other is a backup. Your own system (e.g. SCADA) is responsible for powering up the secondary modem in case the primary modem stops responding for some reason. SATEL NMS

PC Monitoring has a connection to both modems and will use whichever is currently powered up to monitor the radio modem network.

**What to do:** First set up a network with one of the master modems. Then, when everything works, duplicate your network using the **Duplicate Network** command found in the **Network** menu and use **Replace Modem** on the master modem in this new duplicate network, replacing it with the backup hardware. Also go to *Network settings* view and in the **Primary Network** selection box, select the original network. Also use different COM port for each. Now Monitoring can use the backup master if the primary master stops responding, and vice versa. Note that all the substation radio modems appear in both networks. If there are changes to the substation modems, these changes need to be duplicated in both networks.

Strictly speaking this is not a problem, unless modems are added, removed or replaced. Best course of action is to make all changes in the primary network and then remove the secondary network and **duplicate** it again as explained above.

### **6.3 Main window**

When SATEL NMS PC Setup is started, the main window appears. The main window is divided into areas which have different purposes.

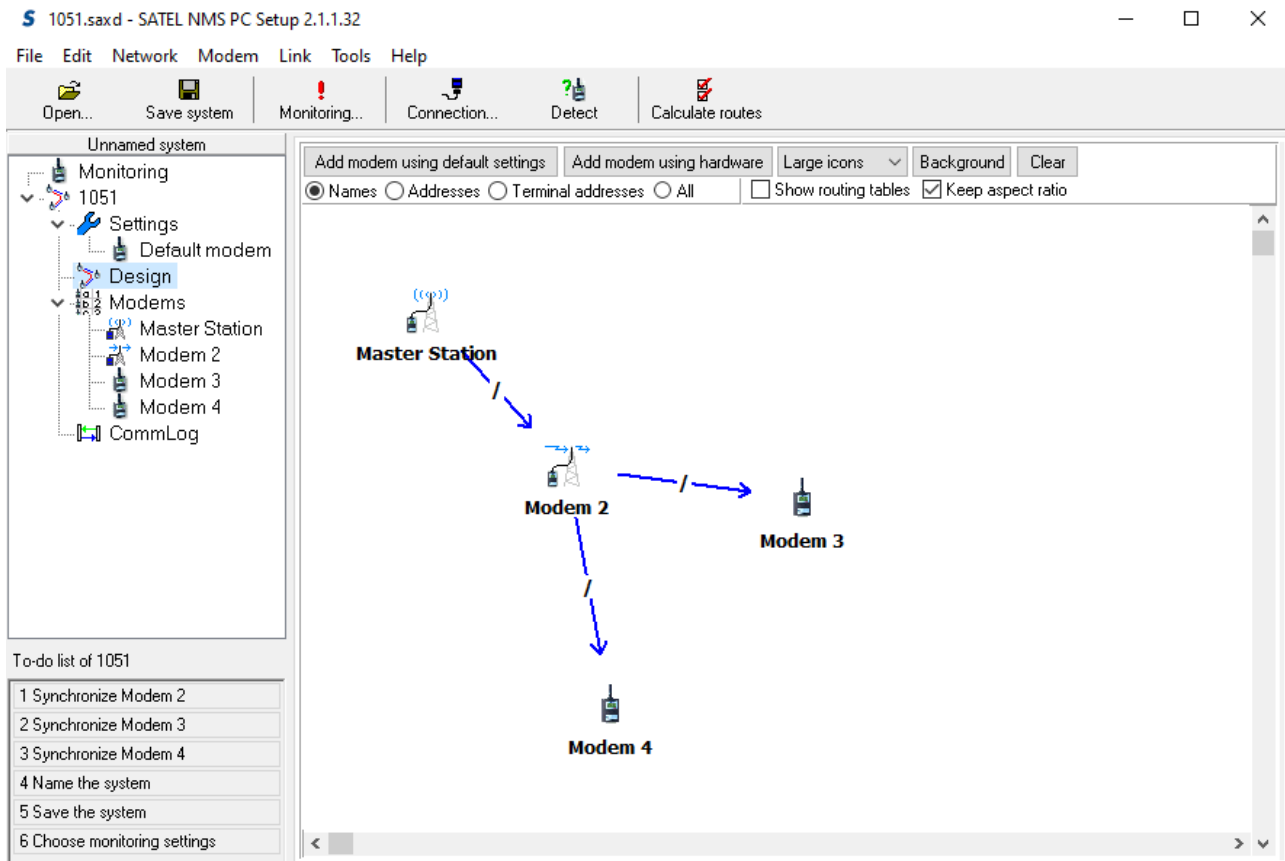


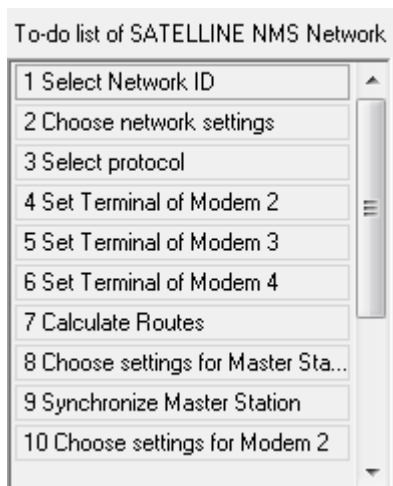
Figure 8: SATEL NMS PC Setup Main Window

Main window area	Purpose	More information
Menu bar	Most commands appear in the menu. Some of the commands are also usable from the various views	See chapter 6.5
Toolbar	Most common commands can be run from the toolbar	See chapter 6.6
System tree view	Shows the structure of your System (networks, modems etc.). Click on items in this tree to access the different views.	For information about the views, see chapter 6.7
View area	This area shows the currently selected view.	For information about the views, see chapter 6.7
To-do list	This area always shows remaining tasks you need to accomplish to get your system or network working properly. Click on each task in order to complete them!	See chapter 6.4

## 6.4 To-do list

Following the *To-do list* is the easiest way to set up a system.

The *To-do list* updates automatically and shows remaining tasks to be performed to get your network working. Only the modems need to be added using the *Design View*, the *To-do list* will remind of everything else.



**Figure 9: To-do list**

Click on the *To-do list* items in order. When clicked, items in the list execute an action, such as showing a dialog window to ask you for the system name.

To-do list item	Explanation
Select Network ID	Opens a dialog where you can enter the Network ID
Name the system/network	Opens a dialog where you can enter the name
Choose network settings/settings for modem	Shows the relevant view and a short message explaining the view
Select protocol	Opens a dialog which allows selection of the protocol
Set terminal address	Opens the <i>Terminal Address Dialog</i>
Calculate routes	Same as clicking on <b>Calculate Routes</b> on the <i>Toolbar</i>
Synchronize modem	Synchronizes (sends the settings to) the modem.

## 6.5 Menu Commands

Below you can find a list of all the menu commands available in SATEL NMS PC Setup.

Note that all menu commands are not available at all times. Some commands require that a certain type of object (Network or Modem, for example) is currently selected or another type of condition exists (such as unsaved changes).

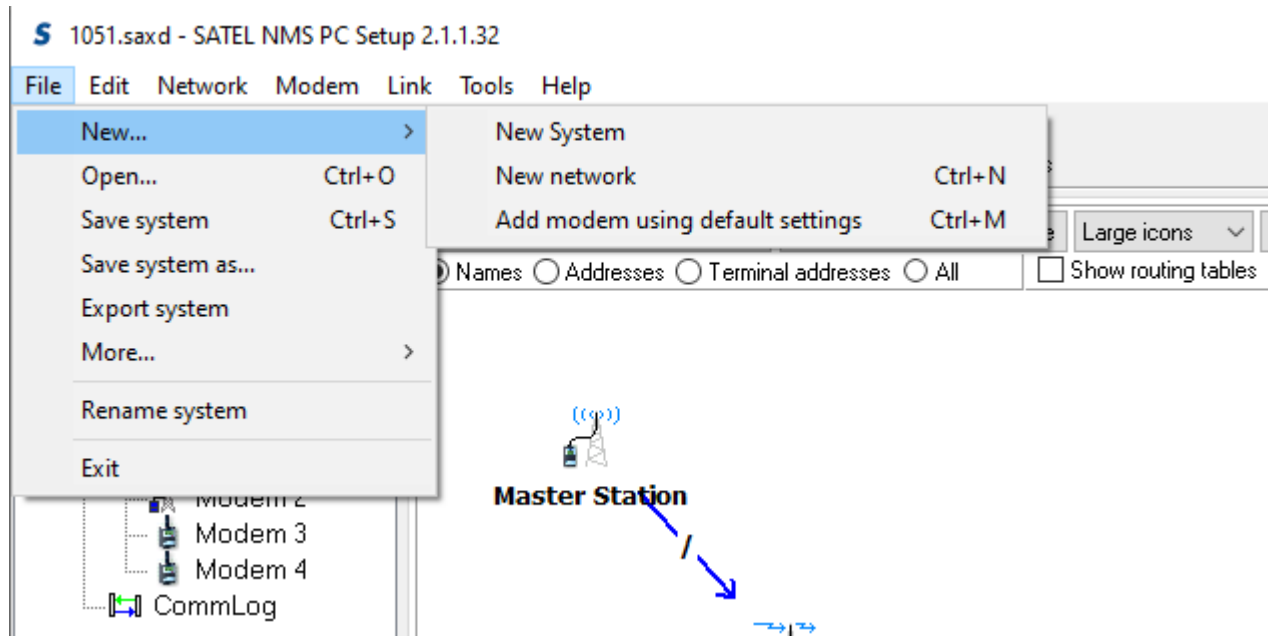


Figure 10: Menus

### 6.5.1 Context menu

The context-sensitive menu is accessed by right-clicking on the program. You will be presented with a list of menu commands depending on the selected object. All these commands also appear in the main menu.

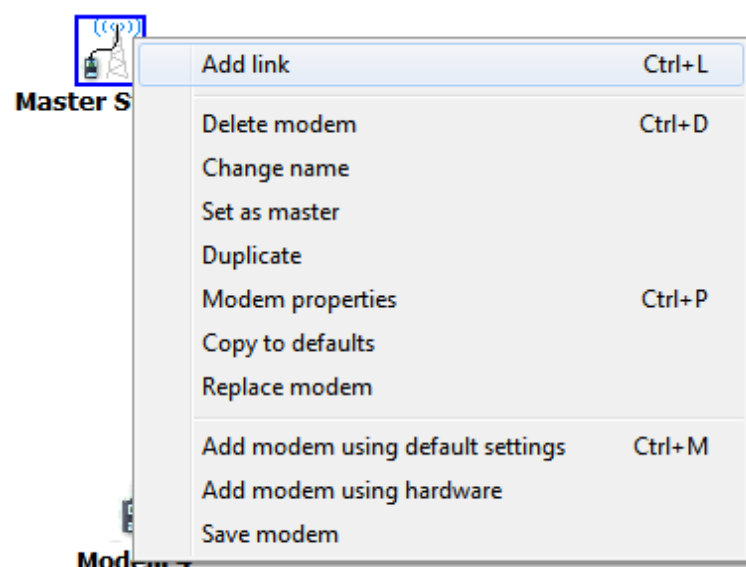


Figure 11: Context menu

## 6.5.2 File Menu

Location: Menu bar. Contains commands for manipulating files and objects

<b>Menu Command</b>	<b>Required selected object</b>	<b>Description</b>	<b>Other locations / keyboard shortcuts</b>
New->New System	<i>None</i>	Clear current system and create a new one. Will ask for user confirmation.	
New->New Network	<i>System/None</i>	Add a new empty network to the current system	<i>Empty system view, Ctrl-N</i>
New->Add modem using default settings	<i>Network</i>	Add a new modem to the selected network. Initial modem settings are copied from the <i>default modem settings</i> .	<i>Design view, Context menu, Ctrl-M</i>
Open	<i>None</i>	Open an existing .sax or .saxd file	<i>Empty system view, Toolbar</i>
Save System	<i>System with unsaved changes</i>	Save the changes in the system to the .sax or .saxd file. (.sax not recommended)	Ctrl-S
Save System As...	<i>System</i>	Save the system to a new .saxd file	
Export System	<i>System</i>	Save the .saxd as uncompressed XML for further processing in external programs.	
Rename System	<i>System</i>	Change the name of the system. This name is independent from the .saxd file name, although the .saxd file name defaults to the system name when first saved.	
Exit	<i>None</i>	Exit the program. If there are unsaved changes, will ask user for confirmation.	<i>Alt-F4</i>

### 6.5.3 Edit menu

Location: Menu bar.

Menu Command	Required selected object	Description	Other locations / keyboard shortcuts
Copy	<i>Text</i>	Copy the currently selected text	Ctrl-c
Paste	<i>Text input field</i>	Paste text to input field	Ctrl-v
Preferences	<i>None</i>	Open the <i>Preferences dialog</i>	

### 6.5.4 Network menu

Location: Menu bar. Network-related commands.

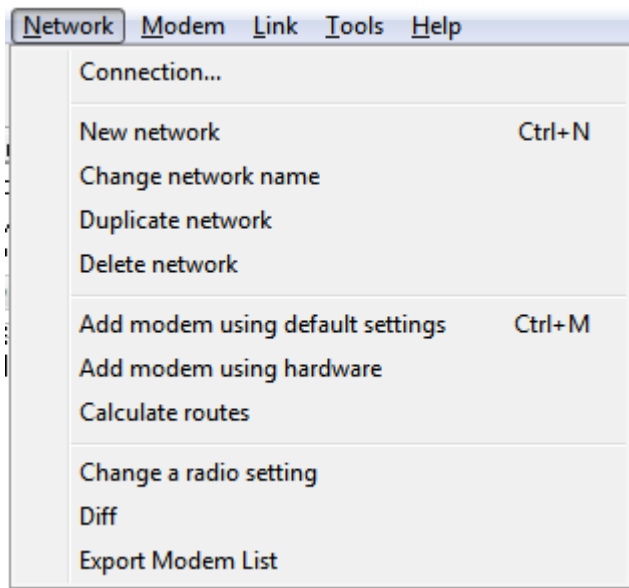


Figure 12: Network menu

<b>Menu Command</b>	<b>Required selected object</b>	<b>Description</b>	<b>Other locations / keyboard shortcuts</b>
Connection...	<i>Network</i>	Open the <i>Connection dialog</i> to specify general connection settings for the current network.	<i>Toolbar</i>
New Network	<i>System</i>	Adds a network to the system	<i>Ctrl-n</i>
Change network name	<i>Network</i>	Rename the selected network. Note that Network name is different from NetworkID. NetworkID is used as a "password" for communication between modems, while Network name is used to identify the network for users.	<i>Network Settings View</i>
Duplicate Network	<i>Network</i>	Creates a new network in the system and copies all settings, modems and links from this network to it. Useful as backup and when defining redundant networks.	
Delete Network	<i>Network</i>	Removes the selected network from the system	
Add modem using default settings	<i>Network</i>	Adds a new modem to the network and copies settings from the <i>Default modem settings</i> to it.	<i>Ctrl+M, Network design view</i>
Add modem using hardware	<i>Network</i>	Adds a new modem to the network and copies settings from the connected modem. This is the right way to go when adding a new EASY+ to an old radio network with 3AS NMS modems.	<i>Network design view</i>
Calculate routes	<i>Network with changed routing settings</i>	Check to see if network settings are valid and generate routing tables for the master modem.	<i>Toolbar</i>



Change a radio setting	Network	Opens a window which can be used to change radio settings of a deployed network easily and safely. See 6.8.3 for details	
Diff	Network with modems	Shows all <u>differences</u> between the modem settings of all the modems in the network.	
Export Modem List	Network with modems	Generates a text listing of modem names, addresses, serial numbers and terminals addresses, which can be copied to external programs, such as Excel.	

### 6.5.5 Modem menu

Location: Menu bar. Modem related commands.

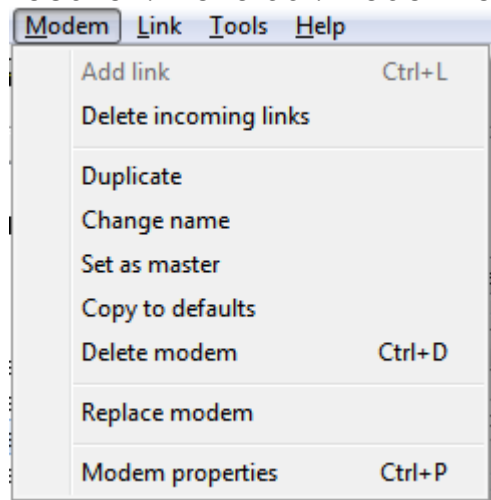


Figure 13: Modem menu

Menu Command	Required selected object	Description	Other locations / keyboard shortcuts
--------------	--------------------------	-------------	--------------------------------------

Add link	<i>Modem and at least two modems present in network. Only shown in Network Design View.</i>	Starts the link drawing mode. Click on the target modem. Link direction is automatic. If a link cannot be created, a message explaining the issue is shown.  In case of problems, create links starting from the master modem first.	<i>Context menu, CTRL+L</i>
Delete incoming links	<i>Modem</i>	Deletes all links pointing towards selected modem.	
Duplicate	<i>Modem</i>	Creates a new modem in the network and copies all settings from selected modem to the new modem.	
Change name	<i>Modem</i>	Renames the modem. This is the name shown on the LCD screen of the modems.	<i>Modem View</i>
Set as master	<i>Modem</i>	Makes the selected modem into network master. Will automatically set necessary settings in all modems, switch link directions and generate routing tables.	<i>Modem View</i>
Copy to defaults	<i>Modem</i>	Copy all settings from this modem into the default modem settings	
Delete modem	<i>Modem</i>	Removes the selected modem from the network	Ctrl+D
Replace modem	<i>Modem</i>	Used to replace the selected modem's currently associated hardware with other hardware. All settings are moved to the new	

		hardware by synchronizing.	
Modem Properties	<i>Modem</i>	Shows the <i>Modem Settings View</i>	Ctrl+P

### 6.5.6 Link menu

Location: Menu bar. Link related commands.

NOTE: To select a link, go to *Network Design View* and click on the "/" character on the link arrow.

<b>Menu Command</b>	<b>Required selected object</b>	<b>Description</b>	<b>Other locations / keyboard shortcuts</b>
Delete link	<i>Link</i>	Removes the link	<i>Context menu</i>
Reverse	<i>Link</i>	Changes link direction, if possible	<i>Context menu</i>

### 6.5.7 Tools menu

Location: Menu bar. Contains tests and occasionally helpful commands

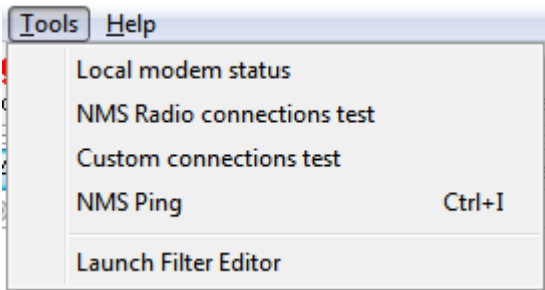


Figure 14: Tools menu

Menu Command	Required selected object	Description	Other locations / keyboard shortcuts
Local modem status	Network	This tool checks which modem is connected to the serial port and shows some information about it.	Network info view
NMS Radio connections test	Network	This tool tries to contact all radio modems in the network by sending NMS messages through the master modem, and displays a report on which modems answered. This is a useful tool to check whether the modems have radio contact with each other.	Network info view
Custom connections test	Network	Same as NMS radio connections, but uses the Custom connections if they have been defined, otherwise uses the network's connection.	Network info view

NMS Ping	Network	Send several NMS messages to a single modem to test the radio link quality. Reports RSSI and elapsed time.	Network info view Ctrl+I
Launch Filter Editor		Starts the external program "SATEL Filter Editor.exe". See chapter 9 for more information.	Network Settings View

### 6.5.8 Help menu

Menu Command	Required selected object	Description	Other locations / keyboard shortcuts
About	None	Display program version and loaded SATELNMS.ID file version information	

## 6.6 Toolbar

The toolbar contains some essential commands. These commands also appear in the menus.



Figure 15: Toolbar

Some commands appear grayed-out (inactive) if they cannot be executed at the moment. Refer to the table below for explanation.

Toolbar Command	Active if	Description
Open	Always	Open an existing .sax or .saxd file
Save System	There are unsaved changes	Save the system to the .saxd file
Monitoring	A Network has been created	Open the Monitoring settings view.
Connection	A Network has been selected	Open the Connection dialog to change the connection settings of the selected network.

Detect	A Network has been selected	Try to detect if a radio modem can be contacted using the current connection settings of the selected network.
Calculate routes	A Network has been selected and there are changes to routing settings	Check to see if network settings of the selected network are valid and generate routing tables.  NOTE: Always click "Calculate routes" after making changes to links between modems or terminal addresses in modems and follow the To-do list to take the new settings into use.

## 6.7 Setup views

Here you'll find all the different views of the setup program explained. The views appear in the *View Area* of the *Main Window*. See 6.3

### 6.7.1 Empty system view

This view is shown when no networks are present in the system. This view is reached by

- Starting the program (if auto load option is not on)
- Creating a new system (File->New->New System)

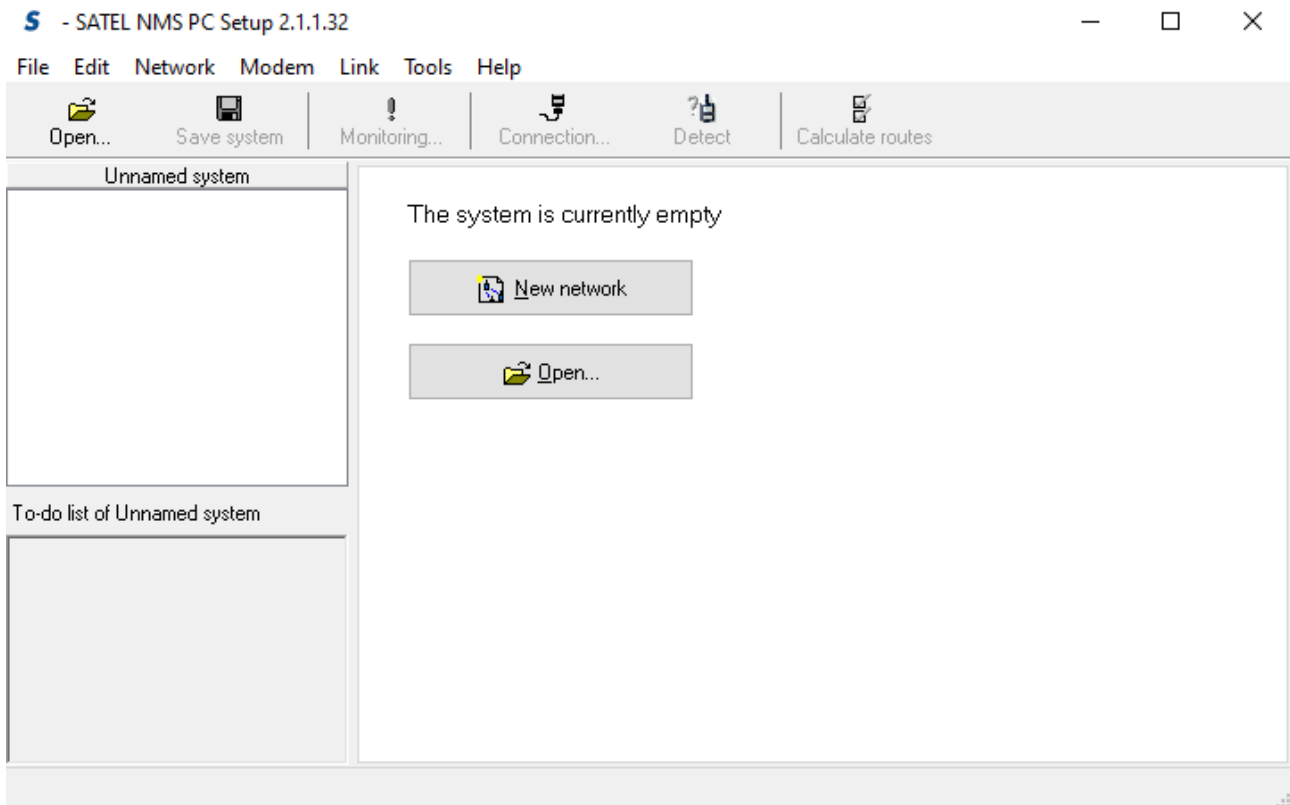


Figure 16: Empty system view

Options in this view:

Option	Explanation
Create a new network by clicking <b>New Network</b>	A system contains one or more Networks. A network contains modems. You need at least one network in the system to be able to work with modems.
Open an existing system file by clicking <b>Open...</b>	If you have an existing .saxd or .sax file, you can open it.

## 6.7.2 Network info view

This view is shown when you click on the network root node on the *System Tree View*. The text of the root node is the network's name.

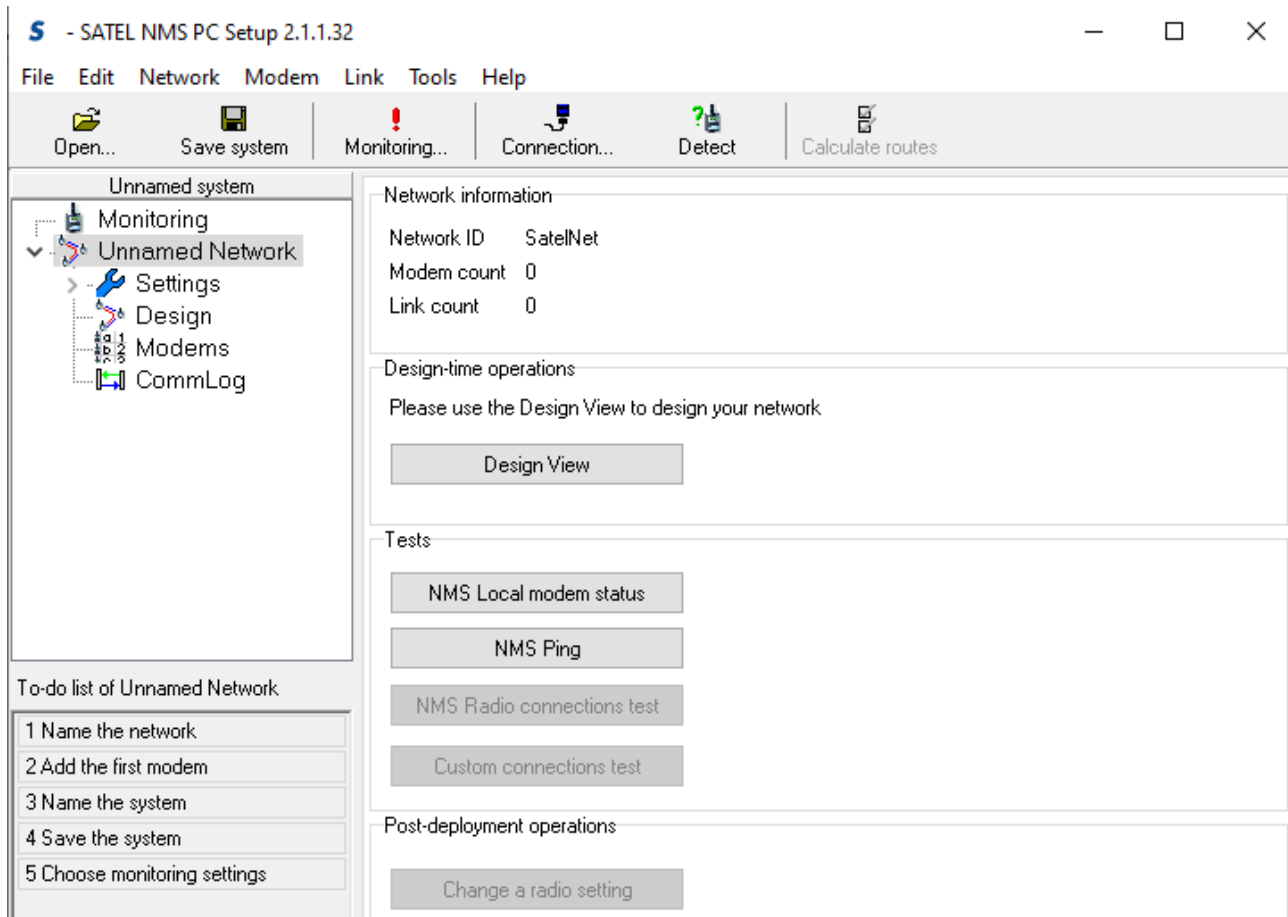


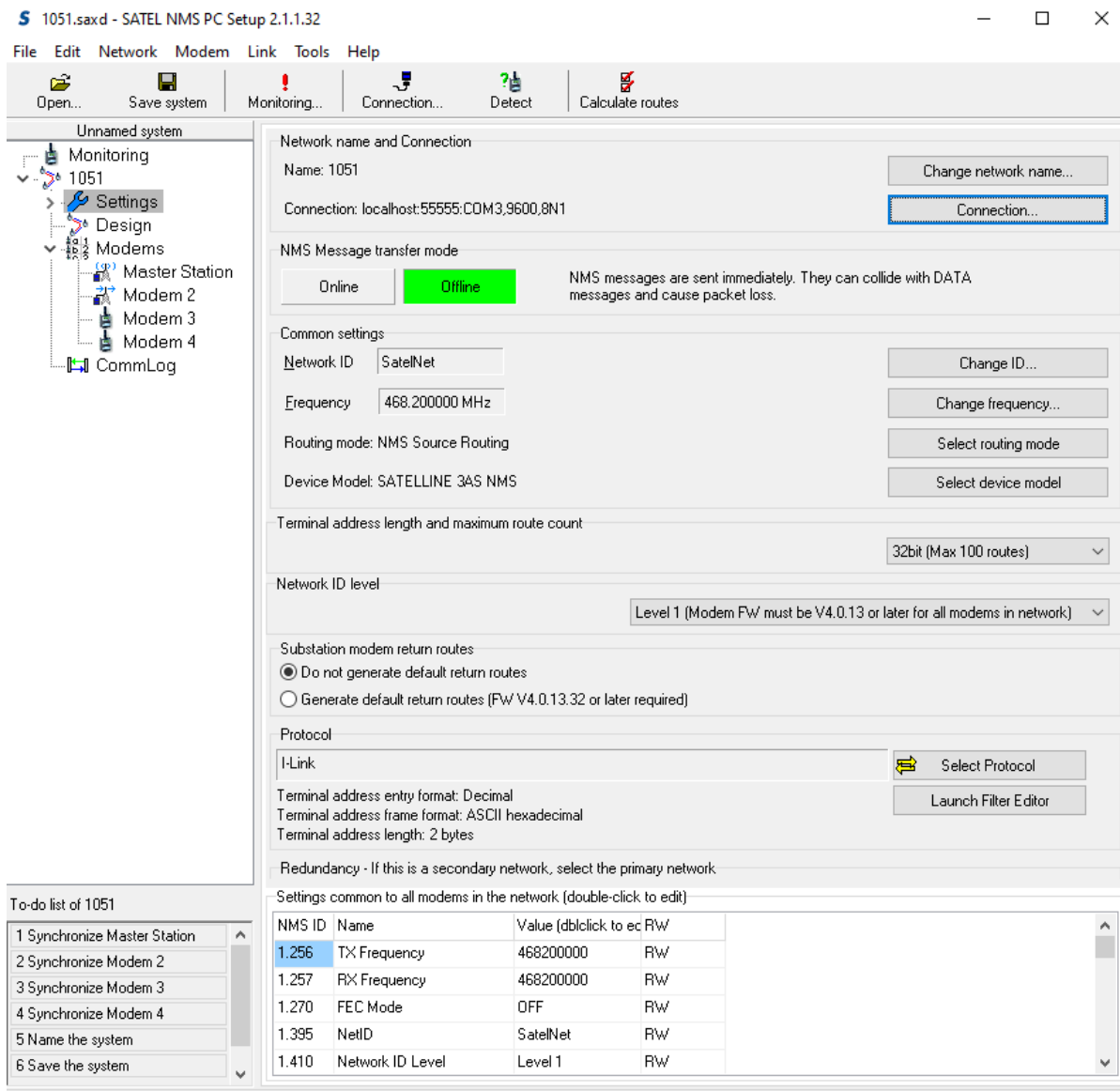
Figure 17: Network info view

Options in this view:Option	Explanation
View Network information	Basic info about the network is shown.
Design-time operations	Click <b>Design View</b> button to go the <i>Network design view</i>
Perform some tests by clicking on buttons in the <i>Tests</i> group box.	See 5.5.7 for explanation of the tests.
Perform <i>Post-deployment operations</i> .	You can <b>Change a radio setting</b> of the whole network. See 6.8.3



### 6.7.3 Network settings view

This view can be reached by clicking on “Settings” in the tree view, immediately below the network root node.



**Figure 18: Network settings view**

The view has two sections. In the upper section (see Figure 19) is a dynamic, scrollable list of generic network settings. Only the settings supported by the master modem are shown in this list, therefore networks of modems with older firmware or different models may not show all settings shown here.

Network name and Connection	
Name: My network	<button>Change network name...</button>
Connection: localhost:55555:COM13,9600,8N1	<button>Connection...</button>
NMS Message transfer mode	
<input type="button" value="Online"/> <input checked="" type="button" value="Offline"/>	NMS messages are sent immediately. They can collide with DATA messages and cause packet loss.
Common settings	
Network ID: SatelNet	<button>Change ID...</button>
Frequency: 460.025000 MHz	<button>Change frequency...</button>
Routing mode: NMS Source Routing	<button>Select routing mode</button>
Device Model: SATELLINE 3AS NMS	<button>Select device model</button>
Network ID level	
Level 1 (Modem FW must be V4.0.13 or later for all modems in network) ▼	
Terminal address length and maximum route count	
32bit (Max 100 routes) ▼	
Substation modem return routes	
<input checked="" type="radio"/> Do not generate default return routes <input type="radio"/> Generate default return routes (FW V4.0.13.32 or later required)	
Protocol	
Protocol	<button>Select Protocol</button>
Terminal address entry format: Decimal	
Terminal address frame format: Byte format	
Terminal address length: 0 bytes	
Redundancy - If this is a secondary network, select the primary network	
Primary Network	none ▼
Over the air data encryption	
OFF	<input type="button" value="Encryption"/> <input type="button" value="Keys..."/>

Figure 19: Network settings

The settings are explained below:

Group box	Explanation
Network name and Connection	<b>Name:</b> You may set the network's name by clicking <b>Change network name....</b> The name is shown in SATEL NMS PC Setup and Monitoring applications, and their logs, but is not saved into any modems.
	<b>Connection:</b> The network's connection settings. This connection is the default connection, where the master modem is assumed to be connected while monitoring or remote administration is performed. Other modems can be connected temporarily to this connection while they are being synchronized.  Click on the <b>Connection...</b> button to change the settings. (This will open the Connection Settings dialog)
NMS Message Transfer mode	This selection affects how SATEL NMS PC Setup transmits NMS messages to the radio network while doing remote configuration. See chapter 3.2.4.2 for explanation of ONLINE and OFFLINE modes. Note that this setting does NOT affect how SATEL NMS PC Monitoring transmits messages. That setting appears in the Monitoring Settings View.
Common settings	<b>Network ID:</b> The Network ID is a string of 8 characters. It is used by the radios as a sort of password, so only modems with the same Network ID are able to decode each other's messages. NMS PC sets the Network ID to all modems when changed. Click <b>Change ID...</b> to choose the ID.
	<b>Frequency:</b> This is the frequency of the network. Both TX and RX Frequency settings are affected and will have the same value. Clicking <b>Change frequency...</b> will open a window which assists in selecting a valid frequency, given the capabilities of the modem HW.
	<b>Routing:</b> Currently selected Routing mode. Can be changed by clicking on <b>Select Routing mode</b> . Only shows routing modes supported by the modem model and NMS PC.
	<b>Device Model:</b> Different device models support different features. If a modem hardware has been connected, the model is detected automatically. Otherwise (when designing a network before having hardware), use <b>Select device model</b> to choose the radio modem family you are planning to use. This way SATEL NMS PC can show the correct features in this and other screens for the desired model.
Network ID Level *	<b>Network ID Level</b> indicates the version of Network ID encoding. Level 0 is the default. In Modem SATELLINE 3AS NMS models, FW 4.0.13 or later, improved encoding level 1 is available. Always use Level 1 if it is available on all modems of the network.  SATELLAR XT5R does not need this setting, improved mode is automatically on in all versions.
Terminal address length and maximum route count *	This feature is supported on SATELLINE 3AS NMS family with new Hardware and FW V4.0.13.34 or later. Up to 200 source routes and modems per network are supported, but maximum terminal address length is limited to 2 bytes (16 bits). To enable, select "16bit (Max 200 routes)" from the selection box. 32bits is the default. Only the Master modem needs to support this feature for it to work. (Other limitations

	may also apply)
Substation modem return routes *	<p>Return routes is a new feature supported in SATELLINE 3AS NMS radio modem family with FW versions 4.0.13.32 or later. A return route is normally automatically created in a Substation modem's RAM when it receives a data message from the Master modem. Any responses from the serial port/RTU are sent back to the Master using the return route. If the radio modem resets before the response is sent, it is lost, as the return route is erased from RAM.</p> <p>The default setting is <b>Do not generate default return routes</b> and it works as explained above. If <b>Generate default return routes</b> is selected, a static return route is created and stored in the Substation modems, therefore allowing responses to be sent to the master even after the substation has reset before a radio message from the master is received. The tradeoff is that whenever network routes are adjusted, substation modems need to be synchronized. Normally only the Master needs to be synchronized when routes change.</p>
Protocol	<p>Here you can select the protocol your system uses for data transfer. Click <b>Select Protocol</b> to open a dialog which allows you to select the suitable protocol.</p> <p>If your protocol does not appear in the list, you can use the Packet Filter editor (see chapter 9) to create one. Click <b>Launch Filter Editor</b> to access the Packet Filter editor SW. NOTE: This is very advanced configuration. Please contact SATEL if you have any questions.</p>
Redundancy - If this is a secondary network, select the primary network	Primary Network: Leave this setting as "none" unless you are defining a secondary (redundant) network, as explained in 6.2.4.
Over the air data encryption **	Click on <b>Encryption</b> to set encryption ON or OFF. Click <b>Keys..</b> to open the encryption key window, see 6.8.4
Settings common to all modems in the network.	See 6.7.3.1, below

\* ) SATELLINE-3AS NMS family modems and SATEL-EASY+ modems only

\*\* ) SATELLAR XT 5R FSK only

### 6.7.3.1 Settings common to all modems in the network

This group box controls settings which are common to all modems of the network. You can change the values marked RW by double-clicking on them. When these values are changed, all modems need to be synchronized again. Additionally, these values cannot be synchronized through radio connection; they need to be changed by synchronizing each modem using a serial cable.

It is suggested to use the *Change a radio setting* function to change these values if they need to be changed *after deployment*, see 6.8.3.

Settings common to all modems in the network

NMS ID	Name	Value (dblclick to edit)	Uniqueness	R/W
1.256	TX Frequency	406400000	identical	R/W
1.257	RX Frequency	406400000	identical	R/W
1.270	FEC Mode	OFF	identical	R/W
1.395	NetID	SatelNet	identical	R/W
1.772	Modem Model	3AS NMS	identical	R
1.777	Master Address	2	identical	R/W

Figure 20: Settings common to all modems

Common Setting	Explanation
TX Frequency	It is possible to change TX and RX frequencies individually using this setting, but care must be taken as dual frequency use is not fully supported by SATEL NMS PC
RX Frequency	
NetID	This is the same as Network ID, above.
Master Address	Substations in a network must know the Master Modem's address. This is also set automatically by SATEL NMS PC whenever the Calculate Routes or Set As Master functions are run.
<b>SATELLINE 3AS NMS, SATEL EASY+</b>	<b>Explanation</b>
FEC Mode	Forward Error Correction. FEC can give better sensitivity, with a little longer communication delays. See modem manual for details.
Network ID Level	This is the same as Network ID Level, above.
<b>XT 5R only</b>	<b>Explanation</b>
DSP FEC Mode	Forward Error Correction. FEC can give better sensitivity, with a little longer communication delay. See modem manual for details.
Over-the-air encryption	Encryption ON/OFF. To set encryption keys, see Over the air data encryption, in 6.7.3.1 and 6.8.4
Selected channel width	See SATELLAR XT 5R FSK manual for more info.
Selected Air Speed	See SATELLAR XT 5R FSK manual for more info.

Multiplier	
Training sequence length	See SATELLAR XT 5R FSK manual for more info.

#### 6.7.4 Network design view

You can open this view by clicking on “Design” in the *System tree* view or *Network info* view. This view is used to design your network.

You can add modems and radio links and addresses and routing tables. Modems are represented by icons, which can be moved. You can select multiple modems at the same time by dragging a selection box around them. This is useful for creating multiple links at the same time or moving many modems simultaneously.

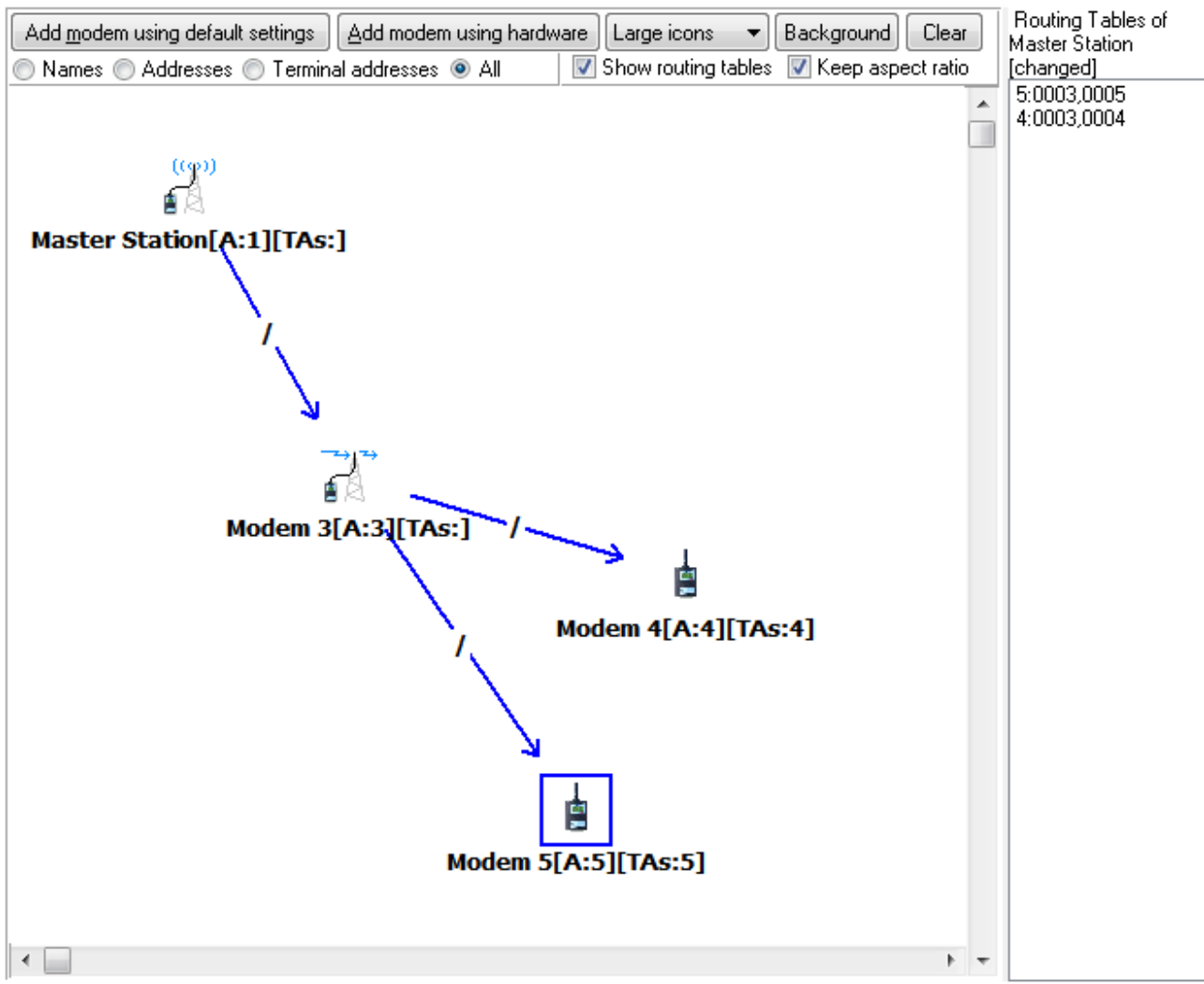


Figure 21: Network design view

Option	Explanation
Add modem using default settings	Add a new modem to the network, copying default settings from the default modem settings view.

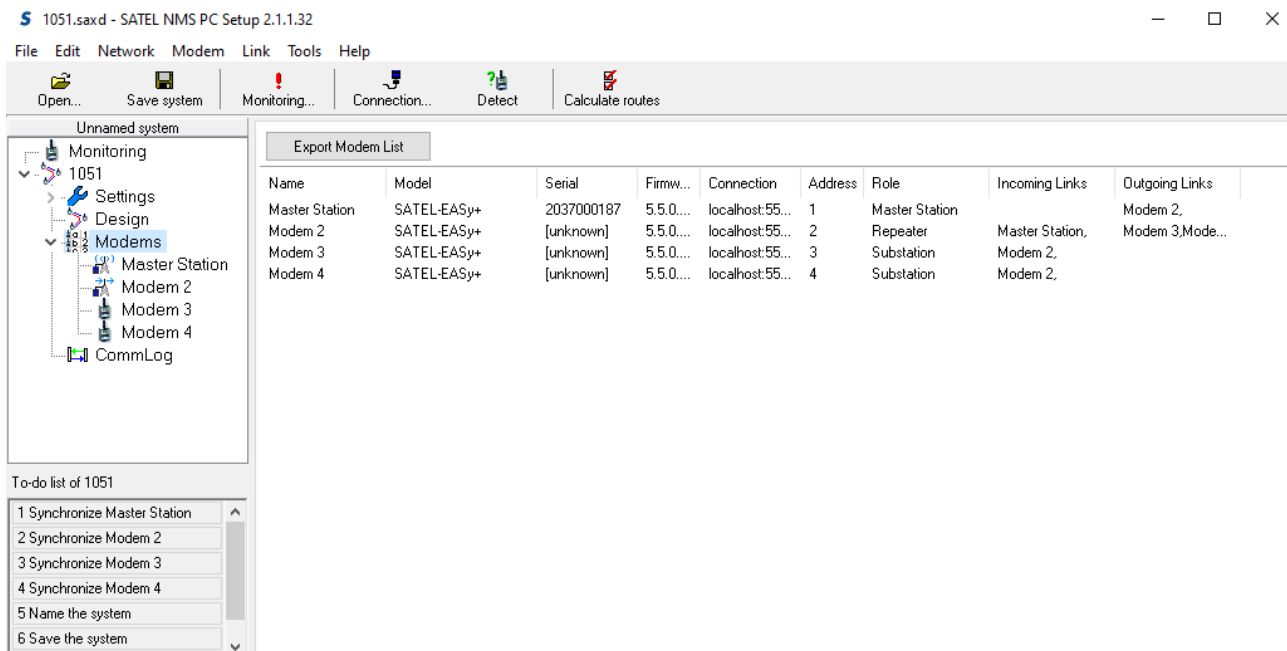
Add modem using hardware	Connect your modem hardware and load all settings from the modem to the program. You should use this to add the first modem to a new network, because all the common settings in it are copied to default modem settings and thereafter used for the rest of the modems. The To-do list will use this same function to add the first modem.
Large icons/small icons selection	Select one of two icon sizes for the modems.
Background button	Opens a file selection window, which can be used to add a background picture to your network map. After an image file has been selected, it can be resized using the handle on its lower-right corner.
Clear button	Removes the background picture.
Keep aspect ratio checkbox	Controls if the background picture should retain its shape while being resized.
Names/Addresses/Terminal addresses/All	Select what is shown in the text labels underneath the icons. The modem name is shown first [A:<number>] means the modem address [TAs:<numbers>] means all terminal addresses defined for the modem
Show routing tables checkbox	Shows or hides the routing table sidebar (right side of the view)



Network map	<p>This area shows the modems and links that have been defined. You can click on a modem to select it, after which you can perform operations on the selected modem. The operations are accessed through the Menu bar, Toolbar or the Context menu (right click).</p> <p>You can create a link or links by first selecting a modem or multiple modems (by dragging a selection box around them), then right-clicking the mouse to bring up the Context-menu. Select Add Link from the context menu: The link(s) appear and start following the mouse. Click on the modem you want to link to finish link creation. Clicking elsewhere will cancel link creation.</p> <p>Links point from the Master Modem toward the substations. Any modem which has both incoming and outgoing links becomes a repeater.</p> <p>Usually link direction is adjusted automatically. Sometimes a link cannot be created, in this case make sure other links point to correct directions, by Reversing them if necessary, and try again.</p> <p>You can select a link by clicking on the "/" character on it. Selected links can be reversed and deleted. Use the context menu (right-click). See also 5.5.6</p>
Routing tables	<p>This area can be brought up by selecting Show routing tables. The routing tables shown are the result of the latest Calculate routes operation. Routing tables are not uploaded into the master modem until it is synchronized. The text [changed] indicates that the routing tables have not been uploaded yet.</p> <p>You may make changes to the routing table by deleting and creating links. Since routing tables are only stored in the Master Modem, substations and repeaters are completely unaffected by changes to the links. This makes it easy to try alternate routes if for example link quality is not good enough along some routes.</p>

### 6.7.5 Modem list view

Clicking "Modems" in the *System tree view* opens the Modem list. This list shows all the modems of the network as a list, as well as some of their key properties. You can select modems on this list and perform menu commands on them.



**Figure 22: Modem list view**

Modem List Column	Explanation
Name	Name of the modem
Model	Modem model, this information is read from the modem itself.
Serial	Serial number read from the modem itself. If [unknown], the modem has never been synchronized and therefore its serial number is not known to SATEL NMS PC Setup. The software uses the serial numbers to associate specific modem hardware with their settings stored in the Setup program.
Connection	Shows which connection settings are used to contact the modem. This value is usually the same for all modems, unless Custom connections have been defined for some modems.
Address	The modem's NMS address. This is NOT a terminal address.
Role	The modem's role in a network; Either Master Station, Substation or Repeater.
Incoming links	List of modems which link to this modem.
Outgoing links	List of modems this modem links to.

### 6.7.6 Modem settings view

This view is shown when you select a modem on the *Tree system* view or double-click a modem on the *Network design* view or the *Modem list* view.

This view shows the settings of one modem. The settings are separated into three tabs:

- Basic settings
- *N* Changes since last sync (*N* is a number telling how many settings have changed)
- Advanced settings and control

There is also the **Synchronize** button which will read the modem settings and send any changes made in SATEL NMS PC Setup to it. The *Last sync date* label shows the time of the last synchronization of the modem.

#### **6.7.6.1 Basic settings tab**

The first page shows the most important settings of a modem.

### Settings for Master Station

Synchronize

Never Synchronized

Basic settings

13 changes since last sync

Advanced settings and control

Connection

Using network's connection

Custom connection settings: localhost:55555:COM1: 

Modify...

Modem Information

Name: Master Station 

Change name

Model: 3ASd EPIC NMS (SATELLINE 3AS NMS) 

Choose model

Serial Number: 06416268 

Replace modem

Firmware version: 4.0.13.34

Radio Settings

TX Power: 1 W

Signal threshold: -115 


Change threshold

Terminal address list

+ Add...

Edit...

Remove



☐ Create a broadcast route

0

Select address

Serial Port Functions

Port 1 Data

Port 2 Diagnostics

Data Port Settings

Bit rate: 9600 bps

Databits: 8 bits

Parity: None

Stop bits: 1 bit

Handshaking

CTS: Clear To Send

RTS: Ignored

CD: RSSI threshold

Settings managed by SATEL NMS PC

Modem Address 1

Change Address

Figure 23: Modem settings view: Basic settings

Basic settings tab	Explanation
Connection	<p>By default all modems are reached by the connection defined in network settings (Connection button in toolbar or in Network settings view). This means that when the modem is synchronized, it is either directly connected to the port defined in network connection, or the Master is connected to that port and the other modems are reached through the master by radio connection.</p> <p>If you wish to connect some modems directly to the PC by using a different connection, you can define a custom connection here.</p>
Modem information	<p><b>Change name</b> button opens a dialog to change the modem's name.</p> <p><b>Choose model</b> is used to set the modem model if an actual modem hardware has not been yet connected.</p> <p><b>Replace modem</b> is used to swap a broken modem for a spare. See 5.2.3</p> <p><i>Firmware version</i> is shown in case a hardware has been connected.</p>
Radio settings	<p>You can change the <b>TX</b> (transmit) <b>Power</b> of the modem. All choices shown are supported by the modem if a Hardware has been connected.</p> <p><b>Signal threshold</b> can also be changed. See modem manual for details.</p> <p>Warning! If you select a too low power setting for a <i>deployed</i> modem it might stop responding after being synchronized.</p>
Terminal address list	<p>This area lists all addresses of user terminals connected to this modem's data port. This information is needed so that routing tables can be generated.</p> <p>Use <b>Add</b> to add a terminal address.</p> <p>Select a terminal address in the list and click <b>Edit</b> or double-click it to edit the terminal address.</p> <p>Select a terminal address and click <b>Remove</b> to remove it.</p> <p>NOTE: Making changes to terminal addresses require <b>Calculate routes</b> and synchronizing the Master modem to become effective.</p> <p>The broadcast route is an advanced feature used in some data protocols; please contact SATEL for more</p>

	information.
Serial port functions	<p>You can select which port is the DATA port and which is the NMS (Diagnostics) port. Note that SATEL NMS PC Setup contacts the modem using the NMS port, unless the modem is in Programming (prog) mode or behind a radio link. This means if you change these settings and attempt to synchronize while not in prog mode, synchronize will refuse to change the settings, since if they were changed synchronization would fail due to communication being lost.</p> <p>Sync your modem in programming mode if you wish to change these settings. See chapter 4.3 for more information.</p>
Data port settings	<p>These settings affect the selected DATA port. If Port 1 function is DATA, these affect port 1. If Port 2 function is DATA, these affect Port 2. See the Advanced... tab for settings of both ports if necessary.</p> <p>See your radio modem manual for details about serial port settings.</p> <p>These settings must be set to valid values before synchronizing the first modem, unless hardware was connected before designing the network.</p>
Settings managed by SATEL NMS PC	<p>These settings are usually automatic, but nevertheless in some cases may need to be set manually.</p> <p>Role: Is the modem a Master Station, Repeater or Substation</p> <p>Modem address: The NMS Source routing address of the modem.</p>

#### 6.7.6.2 Changes since last sync tab

The second tab of *Modem settings* view shows the changes that have been made to the modem's settings since the last Synchronization of that modem. Here you can preview the changes before synchronizing them to the modem.

The title of the tab shows how many changes are currently waiting to be synchronized.

Note that in some cases a simple change to for example protocol or routing could generate many changes in this window. This is because SATEL NMS PC automatically calculates all necessary settings.

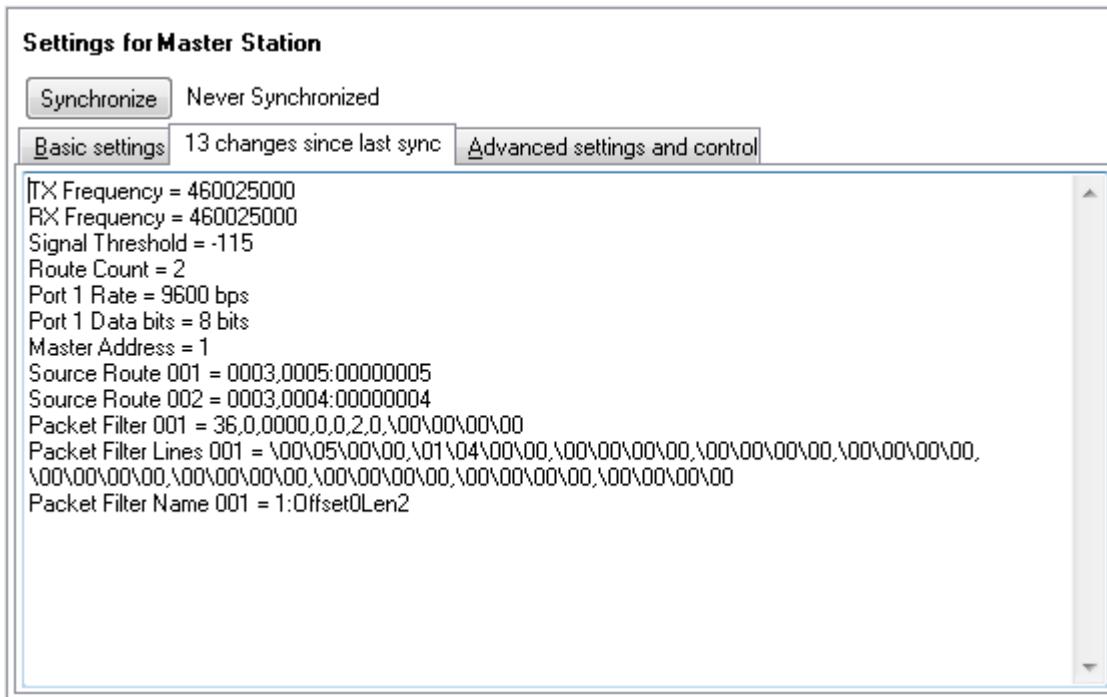


Figure 24: Modem settings view: Changes since last sync

### 6.7.6.3 Advanced settings and control tab

The final tab, *Advanced settings and control* shows ALL available modem settings, including basic settings, and allows you to modify, send and receive them from the modem individually and immediately without synchronizing. Note that to make changes permanent, the Save settings command must be given to the modem. **Synchronize** does this automatically for you, but if you use **Send selected** to change values, you must give the **Save settings** command yourself. If you **Reset** or power down the modem, all settings not saved are returned to their previously saved values. To get up-to-date settings visible on the *Advanced settings and control* list, use **synchronize** immediately after a reset.



### Settings for Master Station

Last Sync Date: 16.10.2020 11.04.39

Basic settings
3 changes since last sync
Advanced settings and control

Name	Value	Updated
<b>Radio Settings</b>		
		11.19.33
		11.19.33
Error Check Mode	OFF	11.19.33
FEC Mode	OFF	11.19.33
RX Frequency	468200000	11.19.33
Radio Compatibility	SATELLINE-3AS-NMS	11.19.33
Radio Max Power	1000	11.19.33
Radio Max TX Level	1 W	11.19.33
Radio Min Power	10	11.19.33
Signal Threshold	-114	11.19.33
TX Delay	0	11.19.33
TX Delay Mode	Restart	11.19.33
TX Frequency	468200000	11.19.33
TX Power	100 mW	11.19.33
<b>Protocol &amp; Network Settings</b>		
Address	1	11.19.33
NetID	SatelNet	11.19.33
Network ID Level	Level 1	11.19.33
Packet Filtering	ON	11.19.33
RX Address Output	OFF	11.19.33
RX1 Address	0	11.19.33
RX1 Addressing	OFF	11.19.33
RX2 Address	0	11.19.33
Role	Advanced - Master	11.19.33

Figure 25: Modem settings view: Advanced settings and control

UI element	Explanation
<b>View</b> button/menu	<p>Select which settings you wish to display, and which columns appear on the grid.</p> <ul style="list-style-type: none"> <li>• User: Shows all user level NMSIDs (Access level 1)</li> <li>• Maintenance: Shows access level 5 NMSIDs</li> <li>• Factory: Shows access level 9 NMSIDs</li> </ul> <p>Note that only level 1 settings may be changed.</p> <p>Categories: Sort settings into categories, such as Radio settings and Port settings. If this is disabled, all settings appear as a single list</p> <p>Columns available:</p> <ul style="list-style-type: none"> <li>• Name: Name of the setting</li> <li>• ID: NMSID of the setting</li> <li>• Value: Current value. If <b>Bold</b>, it has been changed</li> <li>• Type: Data type of the setting</li> <li>• Updated: When was it last received from the modem</li> <li>• RW: Is it readable and/or writable. Write-only settings are commands</li> <li>• Previous value. The value before it was changed</li> </ul>
<b>Get selected</b> button	<p>You may select a setting by clicking on its Name. By holding down SHIFT or CTRL, you may select multiple values. Click this button to load all selected settings from the modem</p>
<b>Send selected</b> button	<p>Click this to send all selected settings to the modem. They usually take effect immediately. Some settings may require an <i>Init Radio</i> or <i>Reset</i> command before they take effect. See modem manual for details.</p> <p>Note that the settings must be Saved to modem non-volatile memory to become permanent. This can be achieved by using the <i>Save user settings</i> command. If they have not been saved, they are lost when the modem is reset. Note that <b>Synchronize</b> saves settings automatically.</p>

Settings grid	<p>The Grid shows the settings. Columns may be selected from the <b>View</b> button/menu. Settings may be sorted by clicking the column headers. Settings may be edited by clicking in the Value column. Green settings may be edited, yellow settings are read-only. If red settings appear, you need to update your NMS PC software to a newer version.</p> <p>When you edit values, either a selection list opens, or you may type in the new value. In case of typing, <i>press the Enter key to finish editing</i>, otherwise the change is cancelled.</p> <p>Changed settings are shown in <b>Bold</b>.</p>
Commands	<p><b>Reset modem</b> button sends the reset command to the modem. All unsaved changes are lost.</p> <p><b>Restore factory settings</b> will return the modem settings back to factory defaults. Using this command may cause the modem to stop responding to radio messages, until it is re-added to the network and synchronized using the serial cable.</p>
More Commands	<p>Select a command from the Command selection list, then select argument (usually Yes or True), and finally click <b>Send Command</b>.</p> <p>The Command selection list depends on the modem model, but always contains at least the "Save user settings" command which can be used to save the settings previously sent to the modem using <b>Send selected</b> so that they are permanently stored in the modem's non-volatile memory (Flash or EEPROM depending on modem model)</p>

### 6.7.7 CommLog view

This view shows NMS message traffic to and from the modems of this network. Only SATEL NMS PC Setup traffic is shown here, other programs have their own message logs.

The log text can be selected using Ctrl-A and copied to the clipboard using Ctrl-C. In case you are contacting SATEL for help with communication problems, the log text could be helpful.

## 6.8 Windows and dialogs

### 6.8.1 Connection settings window

This window is shown when SATEL NMS PC Setup requires you to define the communication settings to reach a Modem's NMS Protocol Port.

**Network connection settings**

Port settings | Additional settings

Connect using

☒ A serial port on this machine

☐ A serial port on another machine on the internet running SATEL Serial Server

☐ Direct connection to a TCP/IP port

IP Address: localhost IP Port: 55555 Default: 55555

Serial Port Settings

COM3 9600 8N1 Change port settings....

Serial ports available in the system

Detect serial ports

Serial Server default settings. Use Serial Server to modify these. Click on a row to use the port settings in Setup.

Port	Status	BPS	Settings	RA/W IP Port	Description
COM1	unknown	9600	8N1	0	
COM2	unknown	9600	8N1	0	
COM3	unknown	9600	8N1	0	

Test connection Not tested yet

OK Cancel

Figure 26: The Connection settings window showing Port settings tab

When this window is shown, usually the best way to proceed is to click **Detect available COM ports**, select a port from the list, and click **Test connection**, followed by OK if the test was successful (Modem detected).

There are two tabs in this window, as well as some commands common to both tabs. All the settings in both tabs affect the connection, so for example the **Test connection** button should be used after changing any setting to make sure the connection works.

The common buttons are explained below and the two tabs later.

UI element	Explanation
Test connection	Attempts to open the defined connection and queries the modem using NMS Protocol. The value requested is the serial number of the modem. If the test is successful, the serial number is shown beside the <b>Test connection</b> button, otherwise an error message, such as “Modem Timeout” is shown.
OK	Accept selected connection settings and close the window
Cancel or [X]	Close window without changing connection settings.

#### 6.8.1.1 Port settings tab

This tab controls the most common port settings.

UI element	Explanation
Connect using	<p>Select connection method to use</p> <ul style="list-style-type: none"> <li>○ A serial port on this machine: Normal RS-232 serial port, or another serial port that appears to Windows as a COM port, such as a Virtual COM port or USB-to-serial adapter. (default)</li> <li>○ A serial port on another machine ... : As above, but the serial ports of another windows PC reachable using an internet protocol address may be used.</li> </ul> <p>Both above methods use SATEL Serial Server to access the serial ports. The first method automatically starts Serial Server when needed, while the second method requires that Serial Server is running in the target machine.</p> <ul style="list-style-type: none"> <li>○ Direct connection to a TCP/IP port: If using a serial port server device or another method which allows direct access to an NMS port of a SATEL modem on a TCP/IP address, use this setting.</li> </ul>

IP Address	The IP Address where SATEL Serial Server is hosted. If “Direct connection...” (see above) is used, the address of the NMS port.
IP Port	The TCP port where SATEL Serial Server is hosted. If “Direct connection...” (see above) is used, the TCP port of the Direct connection NMS port.
Serial port settings	Shows current serial port settings. Clicking on the Available COM ports list will change these values to those clicked. Click <b>Change port settings</b> to modify port settings. Also see <i>SATEL Serial Server settings view. (chapter 7.1)</i>
Change port settings	Opens <i>Port settings dialog</i> , allowing you to change port settings manually.
Serial ports available in the system	This list shows all serial port devices installed into the machine. The list is read from the Windows registry by SATEL Serial server when <b>Detect serial ports</b> is clicked.
Detect serial ports	Lists available serial ports. In case your port is not listed, use the Change Port Settings button.

### 6.8.1.2 Additional settings tab

There are some additional settings in the Additional settings tab of the Connection settings window.

UI element	Explanation
NMS Message sending mode	This is the same setting that appears also on Network settings view. If you are defining a custom connection, this is a separate setting. <ul style="list-style-type: none"> <li>Offline: Send messages immediately</li> <li>Online: Wait for user data</li> </ul> See 3.2.4.2 for more information
Offline mode NMS message Timeout	Time in milliseconds after which a non-responding connection is closed. This applies both to SATEL Serial Server and Direct IP port connections. If you get “Timeout” or “No Response” errors, try increasing this value.

Online mode NMS message Timeout	<p>In online mode the time a message takes to travel to and return from a substation depending on the total user polling cycle duration. The online mode timeout should be set to at least the user polling cycle duration plus time between polling cycles. If you see many “No response” messages, especially during monitoring, try increasing this value. See also 5.9</p>
Host requires a password	<p>If the serial port server requires a password, one may be configured here.</p> <ul style="list-style-type: none"><li>○ Trigger is a text, such as a password prompt, which SATEL NMS PC programs expect from the connection before they send the password.</li><li>○ Password is the password required to open a connection to the port</li></ul> <p>This setting may only be used with the “Direct connection to a TCP/IP port” connection method on the main tab.</p>

The screenshot shows a window titled "Network connection settings" with standard Windows window controls (minimize, maximize, close). It has two tabs: "Port settings" and "Additional settings", with the latter being the active tab. The "Additional settings" tab contains the following elements:

- A group box labeled "NMS Message sending mode (only affects Setup)" containing two radio buttons: "Offline (Send immediately)" (which is selected) and "Online (Send with user data)".
- A label "Offline mode NMS message Timeout (ms)" followed by a spin box set to "5000".
- A label "Online mode NMS message Timeout (ms)" followed by a spin box set to "9000".
- An unchecked checkbox labeled "Host requires a password".
- A group box labeled "Password options" containing two text input fields: "Trigger" and "Password".
- A "Test connection" button on the left and the text "Not tested yet" on the right.
- "OK" and "Cancel" buttons at the bottom right.

Figure 27: Connection settings window: Additional settings tab

### 6.8.2 Unknown modem address dialog

This is shown when you attempt to synchronize a modem for the first time, but the connected modem is already associated with another modem in SATEL NMS PC Setup. For example, you have just synchronized your master modem, and then click the Synchronize button of another modem, but the master modem is still connected.



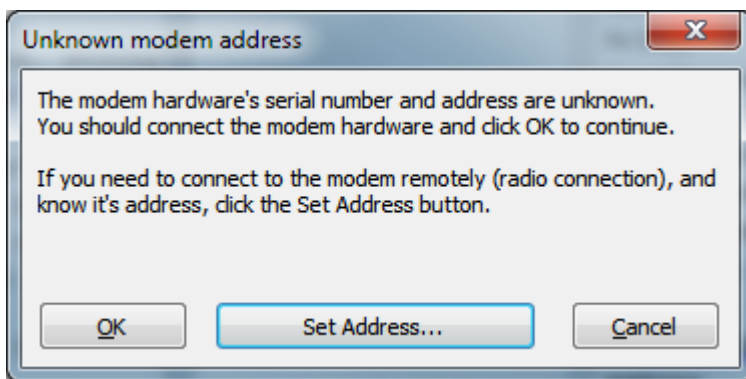


Figure 28: Unknown modem address dialog

- Recommended: Connect the other modem and click **OK**.
- Alternative: If you wish to connect to the modem using radio and know its *modem address*, click **Set Address...**
- Click **Cancel** to abort whatever you were doing

### 6.8.3 Over-the-air radio settings change window

This window is used to change radio settings of a deployed network. It is displayed by choosing *Change a radio setting* from the *Network* menu.

NOTE: This feature requires that all modems have firmware version 4.0.14.0 or later.

S Over-the-air radio settings change

Choose settings to change

Choose...

RX Frequency ( 1.257 ) = Current value: "468200000" Will not be changed  
FEC Mode ( 1.270 ) = Current value: "OFF" Will not be changed  
NetID ( 1.395 ) = Current value: "SatelNet" Will not be changed  
Network ID Level ( 1.410 ) = Current value: "Level 1" Will not be changed

Total process

Start

Current operation progress

<input checked="" type="checkbox"/> Name	Addr	Dist	Timeout	Status	Values	Control messages
<input checked="" type="checkbox"/> Modem 3	3	2		Initialized		
<input checked="" type="checkbox"/> Modem 2	2	1		Initialized		
<input checked="" type="checkbox"/> Master Station	1	0		Initialized		

Figure 29: Over-the-air radio settings change window

UI element	Explanation
Choose... -button	Open a window which is used to choose the settings to be changed.

List of settings	Shows all radio-critical settings and their current values and either the new value to be set or the text “Will not be changed” if the setting is not going to be modified. Click the <i>Choose...</i> -button to change the settings.
Start -button	Starts the process. The process cannot be stopped manually, but if anything is not going right it will stop automatically and display the reason.
List of modems	Shows all the modems and their current status while the process is running.  Modems can be excluded from the process using the checkmarks in front of their names. Note that modems excluded will become unreachable after the process completes!

Additional notes about the process:

- First a connection test will be made, so if a modem is unreachable the process will stop safely. The same applies during the process.
- NOTE: It is recommended to always change the whole network! If you disable a modem, it will “drop out” of the network until it is either manually changed to the new setting by visiting on-site, or the whole network is changed back to original settings.
- If you have long repeater chains and disable one repeater in the chain, you should manually disable also the modems behind it, or the process will fail. This will also cause the whole branch to “drop out” of the network.

### 6.8.3.1 Background

When critical radio settings are changed, radio contact will be lost to farthest modems along the repeater chain until all modems have been changed. Therefore radio settings must be changed starting from the remotest modems and working up the repeater chain towards the master, which will be changed last.

In Figure 30: Example network with repeaters there are six modems. Modems S2 and S3 are farthest from the master (M), therefore they appear first in the list. See the table below for an example of a modem list for this network.

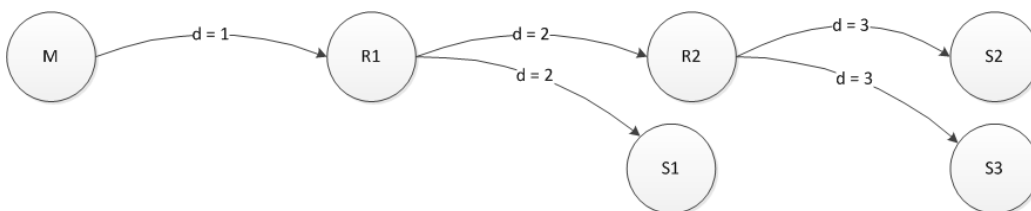


Figure 30: Example network with repeaters

<i>index</i>	<i>Modem</i>	<i>distance</i>
0	S3	3
1	S2	3
2	S1	2
3	R2	2
4	R1	1
5	M	0

Modem at index 0 will be changed first, then index 1 and so forth, until the Master modem is changed last. The list is used to order all radio message operations during the process.

Broadly speaking, the process consists of the following steps:

1. Preparation step
  - a. Generate a list of all modems, ordered from farthest to nearest (in repeater steps)
  - b. Stop DATA traffic
  - c. Test radio connections to all modems
  - d. Determine the NMSIDs and values of all radio settings to be changed
  - e. Calculate *automatic radio settings restore timeout* value and send it to all modems
2. Transmit settings step
  - a. Send all new settings to all modems in order (see step 1a)
3. Activation step
  - a. Send InitRadio command to all modems in order (see step 1a)
  - b. Test new settings by sending GetVal to all modems in order (see step 1a)
4. Save settings step
  - a. Save new settings to all modems by sending SaveUserSettings command to all modems in order (see step 1a)
5. Finished

#### **6.8.3.2 Error handling**

The algorithm has been carefully designed to minimize the risk of errors and the chance of modems dropping out of the network (which would necessitate a visit to the site). For example, the process automatically stops and removes any changes made if any modem suddenly stops responding.

However there is always a risk of something going wrong. Usually the rewards outweigh the risks, because instead of visiting all the sites, you are only forced to visit some of the sites IF something goes wrong, which is unlikely.

#### **6.8.4 Encryption keys window**

This window is used to set the network-wide encryption keys used in SATELLAR XT 5R FSK.

It can be opened by clicking **Keys...** in the Network settings view, *Over the air data encryption* group-box. (See 6.7.3).

Also see the SATELLAR XT 5R FSK manual for more information about encryption.

**S** Editing Encryption Main Key

Key input method

☒ Generate keys from password

☐ Input keys manually

Generate keys

Password

☒ Show password while typing Generate

Input keys manually

Encryption Main Key

Encryption Aux Key

Notes

Password is not saved by NMS PC (keys are saved). Keys are written into the modems during synchronization and cannot be read from a modem. The checksum ("Material Hash") can be used to determine if different devices have the same key.

Checksum

Encryption Key Material Hash

\\10\\10\\32\\8F

OK Cancel

Figure 31: Encryption keys window

UI Element	Purpose
<b>Key input method</b> group box	The easier way is to Generate keys from password. Keys can also be input manually.
<b>Generate keys</b> group box	Input your password. The keys will be generated when <b>Generate</b> is clicked, and shown in the next group box.
<b>Input keys manually</b> group box	Generated keys are shown here. If you wish to input keys manually, each key consists of 16 bytes, in hexadecimal notation, each byte preceded by a backslash ( \ ) character.
<b>Notes</b>	Further information on how the keys are saved to modems.
<b>Checksum</b>	A short checksum (four bytes) which can be

	read from modems to check if they have the same keys.
<b>OK Button</b>	When OK Button is clicked, the keys are saved to all modems' change list. They will be taken into use after each modem is Synchronized.

## **6.9 Monitoring Settings view**

Monitoring settings are selected using SATEL NMS PC Setup, but the monitoring is performed by SATEL NMS PC Monitoring. The settings are saved into the .saxd file, which is loaded by Monitoring.

The settings consist of general settings, the Poll List, Trigger settings and Action settings. NMS PC Monitoring will send NMS messages to the radios according to the poll list and react to the responses according to the Trigger and Action definitions.

The Monitoring Settings View (**Figure 32: Monitoring settings view**) is used to define all monitoring settings, including the custom log file settings.

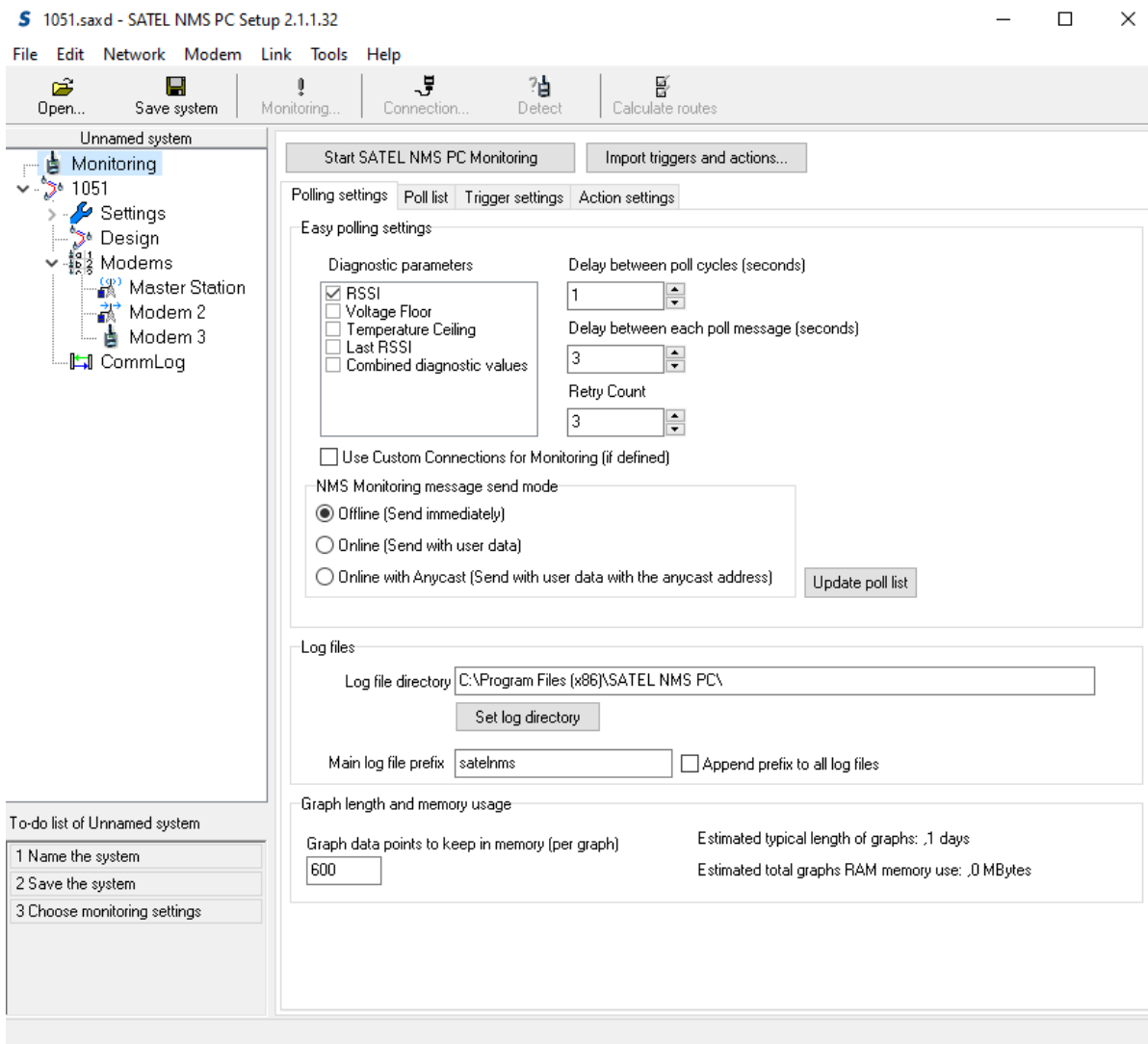


Figure 32: Monitoring settings view

UI Element	Purpose
<b>Start SATEL NMS PC Monitoring</b> Button	Start the Monitoring program using these settings. Asks to save the system if needed.
<b>Import triggers and settings</b> button	Import trigger and action settings from a different system file.
<b>NMS Message sending mode</b>	<p>This setting affects how SATEL NMS PC <i>Monitoring</i> will send NMS messages.</p> <ul style="list-style-type: none"> <li>○ Use “offline” mode when there is no DATA traffic.</li> <li>○ Use “online” mode when there is DATA traffic.</li> </ul> <p>See chapter 3.2.4 NMS Protocol for more information.</p>

### 6.9.1 Polling Settings tab

In this tab (Figure 33) the polling settings are defined. The Poll List is a list of NMS messages sent to the network by the Monitoring program to gather network status information from the modems. This view allows you to define the Poll List.

Start SATEL NMS PC Monitoring
Import triggers and actions...

Polling settings
Poll list
Trigger settings
Action settings

Easy polling settings

Diagnostic parameters

☒ RSSI  
☐ Voltage Floor  
☐ Temperature Ceiling  
☐ Last RSSI  
☐ Combined diagnostic values

Delay between poll cycles (seconds)

1

Delay between each poll message (seconds)

3

Retry Count

5

☐ Use Custom Connections for Monitoring (if defined)

NMS Monitoring message send mode

☒ Offline (Send immediately)

☐ Online (Send with user data)

☐ Online with Anycast (Send with user data with the anycast address)

Update poll list

Log files

Log file directory C:\Program Files (x86)\SATEL NMS PC

Set log directory

Main log file prefix satelnms ☐ Append prefix to all log files

Graph length and memory usage

Graph data points to keep in memory (per graph)

600

Estimated typical length of graphs: .1 days

Estimated total graphs RAM memory use: .0 MBytes

Figure 33: Polling settings tab



### 6.9.1.1 Easy polling settings

In this box polling settings can be defined in a simple and easy way. Changes done here will be reflected in the Poll List visible in the lower part of the view. A typical configuration is to select all parameters in the "Diagnostic parameters" box. In the example configuration Modem Temperature and Voltage parameters are monitored.

UI Element	Purpose
<b>Diagnostic parameters</b> Box	<p>Select which parameters you wish to monitor (typically all).</p> <ul style="list-style-type: none"> <li>• Voltage is the input voltage of the radio modem</li> <li>• Temperature is the highest temperature value measured inside the RF board during transmit</li> <li>• Last RSSI is the measured Signal Strength of the incoming message which contains the NMS poll message asking for the RSSI.</li> <li>• RSSI is link RSSI measurement in both directions of each link. RSSI values are stored in modems and NMS Monitoring asks for each value separately.</li> <li>• Combined diagnostic values is a single NMSID which contains Last RSSI, Noise Level, Voltage, Temperature and Transmit power measurement. It is recommended to use this combined ID together with "RSSI" to get the most effective Monitoring setup possible. In large networks (more than 30 modems), RSSI should be omitted.</li> </ul>
<b>Update</b> Button	Updates the poll list. Click this if you have added or removed modems or changed the connections settings.
Delay between poll cycles	When all items in the list have been polled once, the polling is paused for this many second.
Delay between each poll message	A new poll message is sent this many seconds after a response is received to the last message.
Retry Count	Specifies the number of times the monitoring message is retried.
NMS Monitoring Message send mode	<p>Controls how NMS messages are sent to the network by SATEL NMS PC Monitoring and the master modem.</p> <ul style="list-style-type: none"> <li>• Offline: Messages are sent immediately (But the Delay settings do apply)</li> </ul>

	<ul style="list-style-type: none"><li>• Online: Messages wait in the Master Modem's outgoing message buffer until a DATA message going to the same address is being sent. The message is attached to the data message.</li><li>• Anycast: Requires modem firmware version 4.0.14.0 or later. Messages wait in the Master Modem's outgoing message buffer until any DATA message going to any modem of the network is being sent. The NMS message's DADDR is set to the same value as the data message's DADDR and it is attached to the data message.</li></ul> <p>Note: It is strongly recommended to use Anycast to monitor a deployed network during data traffic operation if your firmware is new enough. This will significantly reduce the delays of monitoring.</p>

### 6.9.1.2 Log files

These settings control log files written by NMS PC Monitoring.

UI Element	Purpose
Log file directory	Currently set directory for log files.
Set log directory button	This log file directory setting affects the directory where the <b>default</b> SATEL NMS PC Monitoring log files are stored. Change the log file location to a writable folder. The installation directory is not recommended.
Main log file prefix	The log file names start with this text. Current date is also added to the log file name.
Append prefix to all log files	Check this to use the prefix with all log files in addition to the main log file.

### 6.9.1.3 Graph length and memory usage

These settings control trend graph data displayed in NMS PC Monitoring.

UI Element	Purpose
Graph data points to keep in memory	This number controls how many data points is kept in RAM memory while Monitoring is running. This value is per graph (or line in the poll list). When the graph has this many data points and a new one is added, oldest data are removed from memory. Data remain in the log files even though they are removed from RAM. SATEL NMS PC Setup gives you an estimate of the amount of RAM needed when you set this number. The estimate is just an estimate, and can be off by 50% or more.

#### 6.9.1.4 Poll List tab

Polling settings
Poll list
Trigger settings
Action settings

Poll list (Trend graphs available in SATEL NMS PC Monitoring)

Add
Remove
Duplicate
Edit
☐ Allow advanced configuration

Network	Comm Port	Target	NMS Command	NMSID	SetVal/Va..	Mode	Timeout	Retry Count
1051	localhost:55555:COM3...	Modem 2	SETVAL	Get RSSI Log	1	Offline	5000	5
1051	localhost:55555:COM3...	Master Station	SETVAL	Get RSSI Log	2	Offline	5000	5
1051	localhost:55555:COM3...	Modem 3	SETVAL	Get RSSI Log	2	Offline	10000	5
1051	localhost:55555:COM3...	Modem 2	SETVAL	Get RSSI Log	3	Offline	5000	5

This group box shows the poll list and allows advanced configuration (not usually necessary).

UI Element	Purpose
<b>Allow advanced configuration</b> Checkbox	If unselected, use easy polling settings. If selected, easy polling settings become disabled and advanced controls (below) are enabled.
<b>Add</b> Button	Add an item to the poll list
<b>Remove</b> Button	Remove the selected item from the poll list
<b>Duplicate</b> Button	Duplicates the selected poll item. Note that duplicates are usually not useful as such and need to be edited.
<b>Edit</b> button	Edit the selected poll item. Opens the <i>Edit poll item window</i> .

### 6.9.1.5 Edit poll message window

Edit poll message (Advanced) X

Poll message type

☐ GETVAL ( normal values )

☒ SETVAL ( ex. Link RSSI )

Message value (required if message type is SETVAL)

1

NMSID

Get RSSI Log Select...

Network

1051

Modem

Modem 2

Comm Port

localhost:55555:COM3,9600,8N1

Timeout

5000

Retry Count

5

OK Cancel

Figure 34: Edit poll message window

This allows advanced configuration of each poll message.

UI Element	Purpose
<b>Poll message type</b>	Choose SETVAL for “RSSI”, GETVAL for the rest (including “Last RSSI”)
<b>Message value</b>	For RSSI, this must be the address of a modem in the network, which is linked to the destination modem.
<b>NMSID</b>	Shows the name of the current NMSID
<b>Select... -button</b>	Opens a window to choose the NMSID to monitor.
<b>Network</b>	Which network to monitor
<b>Modem</b>	Which modem to monitor
<b>Comm Port</b>	The connection to use
<b>Timeout</b>	Custom timeout for this message

## 6.9.2 Trigger Settings tab

A Trigger specifies a condition which, if it exists in the network, will cause an Action to be executed and/or an alarm to be activated inside SATEL NMS PC Monitoring.

Every NMS message response received from the modem network will be compared against all the defined Triggers. If a Trigger matches the response, the Action or Actions specified in the Trigger are executed and an optional Alarm is displayed.

The trigger settings tab shows defined triggers and allows adding, removing and editing triggers.

Start SATEL NMS PC Monitoring    Import triggers and actions...

Polling settings   Poll list   **Trigger settings**   Action settings

**Triggers**

When a response to a poll message arrives from a modem, it is compared to the trigger list. If a trigger matches the response, an action can be performed.

Trigger log file prefix  
triggers

**Trigger list**

Add   Remove   Duplicate   Edit   Move Up   Move Down

Name	NMSID	Target	Condition	Threshold	Actions
Voltage Trigger	Voltage Floor		is less than	12	
Modem 2 RSSI low	none	Master Station in SatelNet	is less than	-105	
No con trigger	none		not responding		No con Alarm log:

Figure 35: Trigger settings view

UI Element	Purpose
<b>Trigger log file prefix</b>	This text is appended to the log file names. Current date is also added to the file name. A trigger log is automatically written into the log file directory.
<b>Add</b>	Shows the Edit trigger window and if the user clicks OK, the new trigger is added to the list.
<b>Remove</b>	Removes the currently selected trigger from the list.
<b>Duplicate</b>	Makes a copy of the currently selected trigger and adds it to the list.
<b>Edit</b>	Opens the Edit trigger window allowing the user to change the currently selected trigger.

<b>Move Up/Move Down</b>	Change the order of the triggers in the list.
--------------------------	---

6.9.2.1 Editing a Trigger

When “Add” or “Edit” button in the Trigger settings tab is clicked, the *Trigger editing window* appears.

S

Edit trigger

—

□

×

Name

Voltage Trigger

Trigger type

is less than

▼

Threshold

10

NMSID

Voltage Floor

Select...

Applies to

☒ All modems in the system

☐ All modems in the specified network

☐ A specified modem

Network

▼

Modem

▼

☒ This trigger causes an alarm when triggered

Additional actions

OK

Cancel

Figure 36: Trigger editing window

UI Element	Purpose	
Name	This is a freely chosen text which is used to name the trigger.	
Trigger type	This setting specifies what kind of comparison is made when the trigger is compared to a value received from the network	
	Setting	Description
	not responding	The Trigger matches if an NMS query sent to the network does not receive a response. NMSID and Threshold are ignored in this case.
	is less than	The Trigger matches if a received NMS



		Parameter has the same NMSID as this trigger AND the NMS value is less than the specified threshold
	is greater than	The Trigger matches if a received NMS Parameter has the same NMSID as this trigger AND the NMS value is greater than the specified threshold
	drops below	Same as “is less than” but only triggers once, not every time a value is received. If a value higher than threshold is received and then a lower value is again received the trigger triggers again.
	raises above	Similar to “drops below” but for values that are higher than the threshold.
	link breaks	If a modem does not respond this trigger triggers once, and will not trigger again until the modem has responded once and then fails to respond again.
	link ok	If a modem did not respond to a message and then responds to another message, this trigger triggers.
Threshold	A number the received value is compared to determine if the Trigger matches.	
NMSID	The trigger is only compared to received values with the same NMSID as in the Trigger definition. Click the “Select” button to select the NMSID. NOTE: A Trigger will never match if the same NMSID does not exist in the Poll List. (Because in that case the value is never received from the network)	
Applies to	Which modems the trigger applies to.  It is usual to select all modems in the system, but in some cases it may be useful to match a trigger only to values received from a specific network or modem. For example, it may be permissible for some substations to reach temperatures of 40 degrees, but important repeaters and master modems must remain at 35 degrees or below. (Note: these are arbitrary numbers used as an example only.)  In these cases, specific triggers may be defined for each different case.	
This trigger causes an alarm when triggered	This setting causes an alarm in SATEL NMS PC Monitoring when the Trigger matches. The alarm is shown in the alarms view of Monitoring, a red message is displayed in the window and an alarm log is written into the directory specified in 6.9.3.	
Additional Actions	Select all Actions that should be executed when the Trigger matches.	

	NOTE: This list is empty until some Actions have been defined in the Actions tab of Monitoring Settings.
<b>OK</b> -button	Save the changes and close window
<b>CANCEL</b> -button	Discard changes and close window

### 6.9.3 Action Settings tab

Actions allow NMS PC Monitoring to respond to events or changes detected by starting an external program or writing a custom log file (useful to export monitoring events to other programs). Similar to Triggers, Actions may be Added, Removed, Edited and Duplicated in this view using the buttons.

Action settings are defined in the Action settings tab (Figure 37).

Figure 37: Action settings view

UI Element	Purpose
<b>Action log file prefix</b>	This text is appended to the log file names. Current date is also added to the file name. An action log is automatically written into the log file directory.
<b>Alarm log file prefix</b>	This text is appended to the log file names. Current date is also added to the file name. An alarm log is automatically written into the log file directory.
<b>Add</b>	Shows the <i>Action definition window</i> and if the user clicks OK, the new action is added to the list.
<b>Remove</b>	Removes the currently selected action from the list.
<b>Duplicate</b>	Makes a copy of the currently selected action and adds it to the list.
<b>Edit</b>	Opens the <i>Action definition window</i> allowing the user to change the currently selected action.
<b>Move Up/Move Down</b>	Change the order of the actions in the list.

### 6.9.3.1 Adding or editing an Action

When “Add” button in the Action settings tab is clicked, the *Action definition window* (Figure 38: Action definition window) appears. Note that if the “Edit” button is clicked the view is slightly different because the type of an action cannot be changed after it has been created.

**S Action definition**

Action name

Execute a command **Write to file**

Filename, including path, variables are allowed (see below) (Note some may cause errors, eg. \$n\$)

Line to insert into file, variables are allowed (see below)

Available variables:

- \$t\$ -- Tab Character
- \$n\$ -- Newline (windows style)
- \$ModemName\$ -- Name of the modem
- \$NetworkName\$ -- Name of the network
- \$NmsID\$ -- ID of the NMS parameter
- \$NmsName\$ -- Name of the NMS parameter
- \$NmsValue\$ -- Value of the NMS parameter
- \$NumValue\$ -- Numeric value of a NMS Parameter
- \$LogTime\$ -- Time part of the time when the action was run (hh:mm:ss:nnn) (n=msecs)
- \$LogDate\$ -- Date part of the time, eg. 20080112 (yyyymmdd)
- \$DashedDate\$ -- Date with dashes, eg. 2008-01-12 (yyyy-mm-dd)
- \$TriggerName\$ -- Name of the trigger
- \$TriggerDescription\$ -- Human-readable description of the trigger
- \$ActionName\$ -- Name of the action
- \$ActionDescription\$ -- Human-readable description of the action
- \$Unit\$ -- "V" for Volts, "C" for Celsius, "dBm", etc. as applicable
- \$OtherModem\$ -- The modem which originated the transmission whose signal strength was measured by \$ModemName\$. Applicable only with the RSSI NMS Parameter, otherwise this will be an empty string.

OK Cancel

Figure 38: Action definition window

UI Element	Purpose		
Action name	This is a freely chosen string describing the Action.		
Tabs: <b>Execute a command</b> and <b>Write to file</b>	Select the action type by selecting the appropriate tab.		
	<b>Tab</b>	<b>Description</b>	
	Execute a command	A command line command is executed.	
	Write to file	A text string will be written into a file.	
Filename	The full name, including path, of the file where the log line is written. The file will be opened, written into, and then closed immediately.		
Line to insert into file	The text that will be written into the file. A Windows-standard line feed will be added automatically. The text may consist of any text and/or any number of the variables defined below.		
Command	The executable file which will be called when the action is run. Full path is recommended, though depending on the setting of the environment variable PATH might not be needed.		
Parameter list...	The command line parameters that will be passed to the executable.		
Available variables	These variable names may be used on the Line other fields, see above. The variable will be replaced by the appropriate value when the action is performed.		
	<b>Variable</b>	<b>Description</b>	<b>Examples</b>
	\$t\$	Tab Character.	
	\$n\$	Additional Newline (windows style linefeed)	
	\$ModemName\$	Name of the modem.	<i>Master Station</i>
	\$NetworkName\$	Name of the network.	<i>SCADA Demo Net</i>
	\$NmsID\$	ID of the NMS parameter.	<i>1.86</i>
	\$NmsName\$	Name of the NMS parameter.	<i>Voltage Ceiling</i>
	\$NmsValue\$	Value of the NMS parameter.	<i>28</i>
	\$NumValue\$	Numeric value Including the minus sign if	<i>12</i>

		the value is negative and a decimal point and an appropriate number of decimals if applicable.	<i>-10.2</i> <i>-105</i>
	\$LogTime\$	Time part of the time when the action was run. hh:mm:ss:msec	<i>13:55:53:0354</i>
	\$LogDate\$	Date part of the time. yyyymmdd	<i>20071030</i>
	\$TriggerName\$	Name of the trigger which executed this action.	<i>Voltage Low</i>
	\$TriggerDescription\$	Human readable description of the trigger, including most of the other parameters.	
	\$ActionName\$	Name of the action.	<i>Write to log</i>
	\$ActionDescription\$	Human readable description of the action, including most of the other parameters.	
	\$Unit\$	The unit of the parameter in short form. Not all parameters have a unit, in this case the value is an empty string.	<i>V</i> <i>C</i> <i>dBm</i>
	\$OtherModem\$	The name of the modem which originated the transmission whose signal strength was measured by \$ModemName\$. Applicable only with the RSSI NMS Parameter, otherwise this will be an empty string.	<i>Modem 2</i>

## 7 SATEL NMS PC MONITORING

This chapter describes the SATEL NMS PC Monitoring program. At the beginning of the chapter there is an overview of the features and instructions for common tasks. Towards the end of the chapter all the windows and views of the program are explained.

### 7.1 Overview

SATEL NMS PC Monitoring is intended to perform the following functions:

- Regular polling of diagnostics variables from a radio modem network using SATEL NMS Protocol
- Writing of monitoring logs (including traffic, trigger, action and custom logs)
- Displaying of trend graphs and other diagnostic information
- Executing actions based on the values of and changes in the diagnostic variables.

Monitoring cannot be used to make any changes to the network settings.

Since Monitoring is a separate executable, it can be run with different user privileges than the Setup program. In particular, it is usually a good idea to restrict access to Setup for certain key persons, while Monitoring can be installed to a wider user base.

### 7.2 Common tasks

#### 7.2.1 Starting the program

Once you have a fully setup system created using SATEL NMS PC Setup and saved in a .sax file, you can start monitoring. Monitoring can be started in one of two ways:

- From within SATEL NMS PC Setup, by clicking **Start NMS PC Monitoring** in the *Monitoring settings* view. The .saxd file is loaded and monitoring started automatically.
- By starting SATEL NMS PC Monitoring from the Windows start menu, command line, shortcut etc. In this case, you need to load the .sax file separately using the menu command File->Open, unless the .sax file name is given to Monitoring as a command line parameter, in which case the file is loaded and monitoring is started automatically when the program starts.

If Windows is configured to log in automatically and a shortcut to Monitoring (including the .sax filename) is added to the Windows Startup folder, the program will be started automatically if and when the PC reboots.

### 7.2.2 Viewing diagnostics

In the Main window (chapter 7.3) you can select from the various available views.

## 7.3 Main window

The main window has three main areas: The Main menu, The Alarm indicator and the View area.

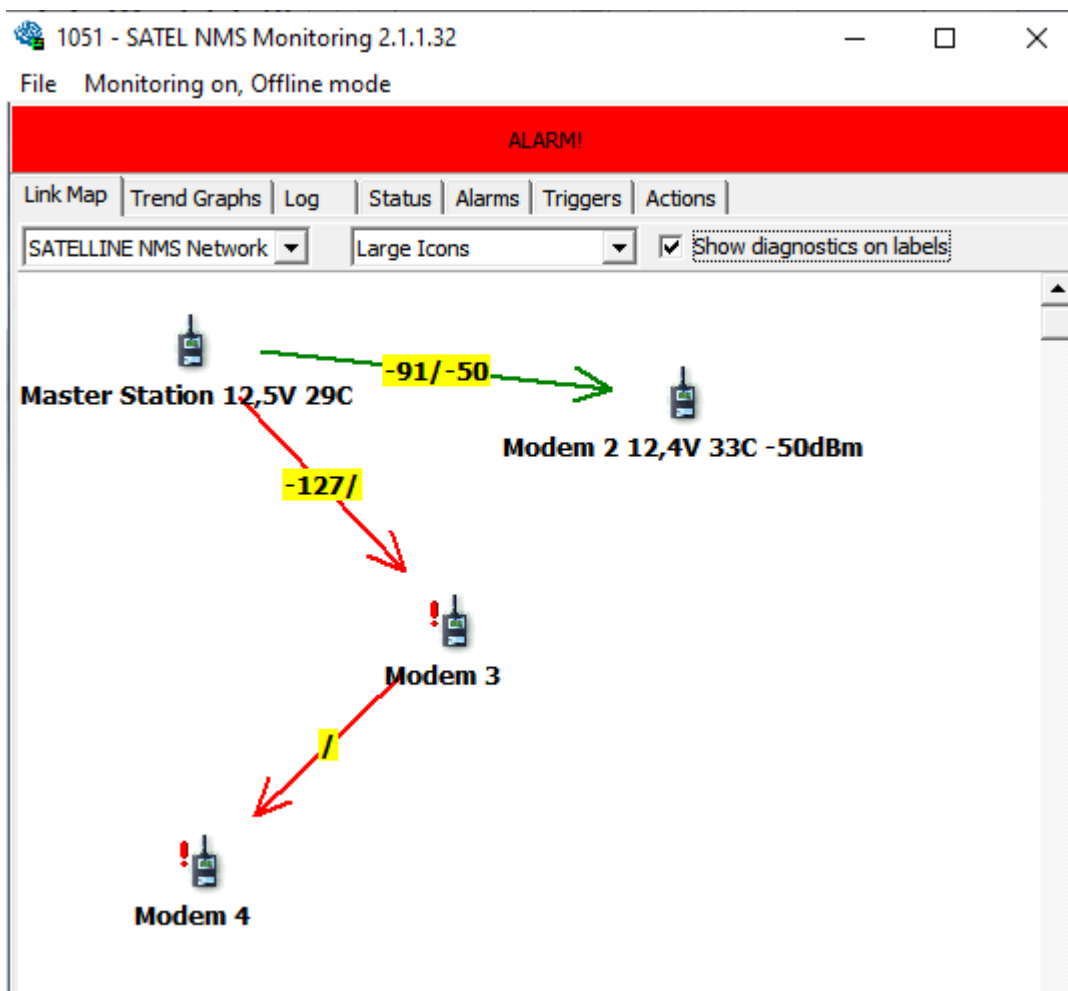


Figure 39: NMS PC Monitoring, Main window



Main window area	Purpose	More information
Main menu	Most commands appear in the menu. Some of the commands are also usable from the various views	See chapter Menu commands
Alarm indicator	<p>If there are defined alarm conditions in the system and the Monitoring is ON, the Alarm indicator will turn bright red color in case an alarm happens.</p> <p>You can click on the Alarm indicator to show the alarms.</p>	See chapter Alarms
View area	This area shows the currently selected view.	For information about the views, see chapter Monitoring views

## 7.4 Menu commands

Here are listed all the menu commands available in SATEL NMS PC Monitoring.

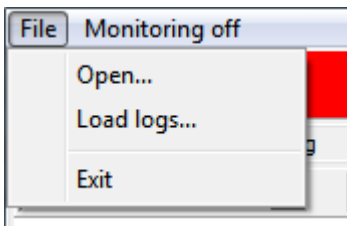


Figure 40: Monitoring Menus

### 7.4.1 File Menu

Location: Menu bar. Contains commands for manipulating files.

Menu Command	Description
Open...	Open a system (.sax or .saxd) file
Load logs...	<p>Load old logs (Main log file type) to display the diagnostic data contained in the log.</p> <p>Use this to access older monitoring data which have been removed from the RAM memory of NMS PC Monitoring.</p> <p>This menu is only available when monitoring is OFF.</p>

Exit	Stops monitoring and closes the program. Log files remain, but will not be loaded automatically the next time the SW s started, use Load logs... to see older monitoring data.
------	--

### 7.4.2 Monitoring menu

The name of this menu changes to indicate whether monitoring is on or off. It also shows whether the NMS message transmitting method is ONLINE or OFFLINE. (This can be selected in NMS PC Setup Monitoring settings view).

Menu Command	Description
Start	Start monitoring. Will send NMS messages defined in the SATEL NMS PC Setup <i>Monitoring settings</i> view, Polling List, to gather diagnostic information from the radio modem network. As polling proceeds the views of NMS PC Monitoring are updated.
Stop	Stop monitoring. If monitoring is <b>Started</b> again, the previous monitoring data will remain and be shown as normal. (Unless the whole program is closed and restarted)

## 7.5 Monitoring views

The views are accessed using the *Tabbed control* located at the top of the *View area*. The name of the view is displayed on the tab. Click on the tabs to change the view.

### 7.5.1 Link Map tab

This view shows the network as a map, almost exactly like the NMS PC Setup does. Information about modem diagnostics can be shown on the modem icon labels (by checking the option) and link RSSI values are shown on the links.

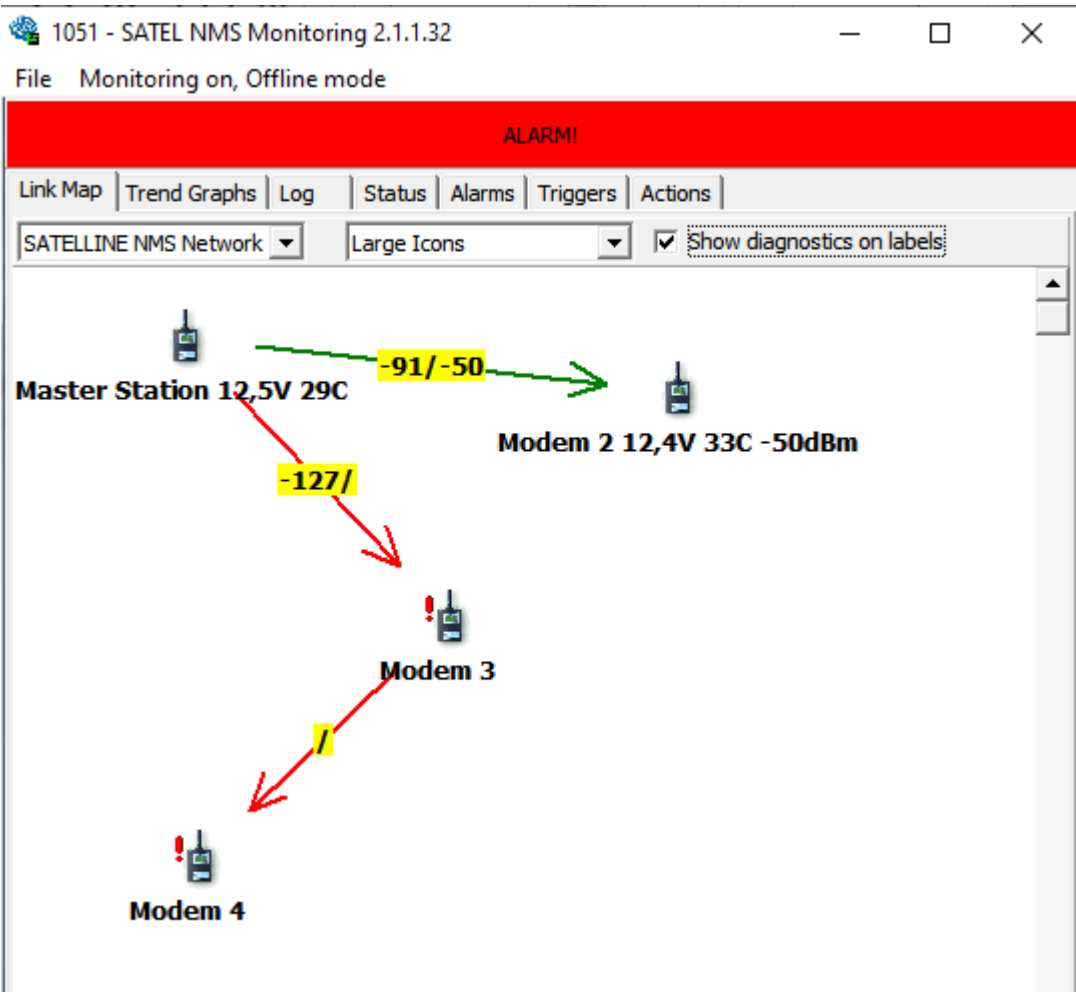
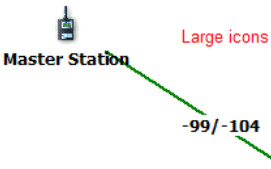
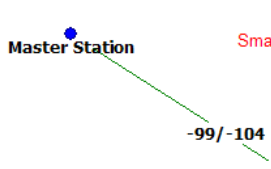
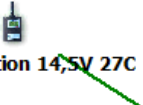


Figure 41: Link map view

Options in this view:

Option	Explanation
Selection list for Network names in the system.	A system contains one or more Networks. Each network has their own topology (modems and links) Only one can be displayed at a time. Choose which one you wish to be displayed.
Selection list of small or large modem icons.	Select either Small Icons or Large Icons (modem icons). The link line thickness line will also change. <div><div><div>Large icons</div></div><div><div>Small icons</div></div></div>

<b>Show diagnostics on labels.</b>	Link RSSI values (both directions) are always shown on the link labels (if they are polled). Check this option to show other values below the modem icons.  
Move the icons around.	The icon positions can be changed but the new position will not be saved and will return to normal when the program is restarted. The positions must be changed in NMS PC Setup to be permanent.

### 7.5.2 Trend Graphs tab

This view shows diagnostics in graph form. Each received value from the system becomes a data point in one of the graphs. Data from all networks in the system is displayed.

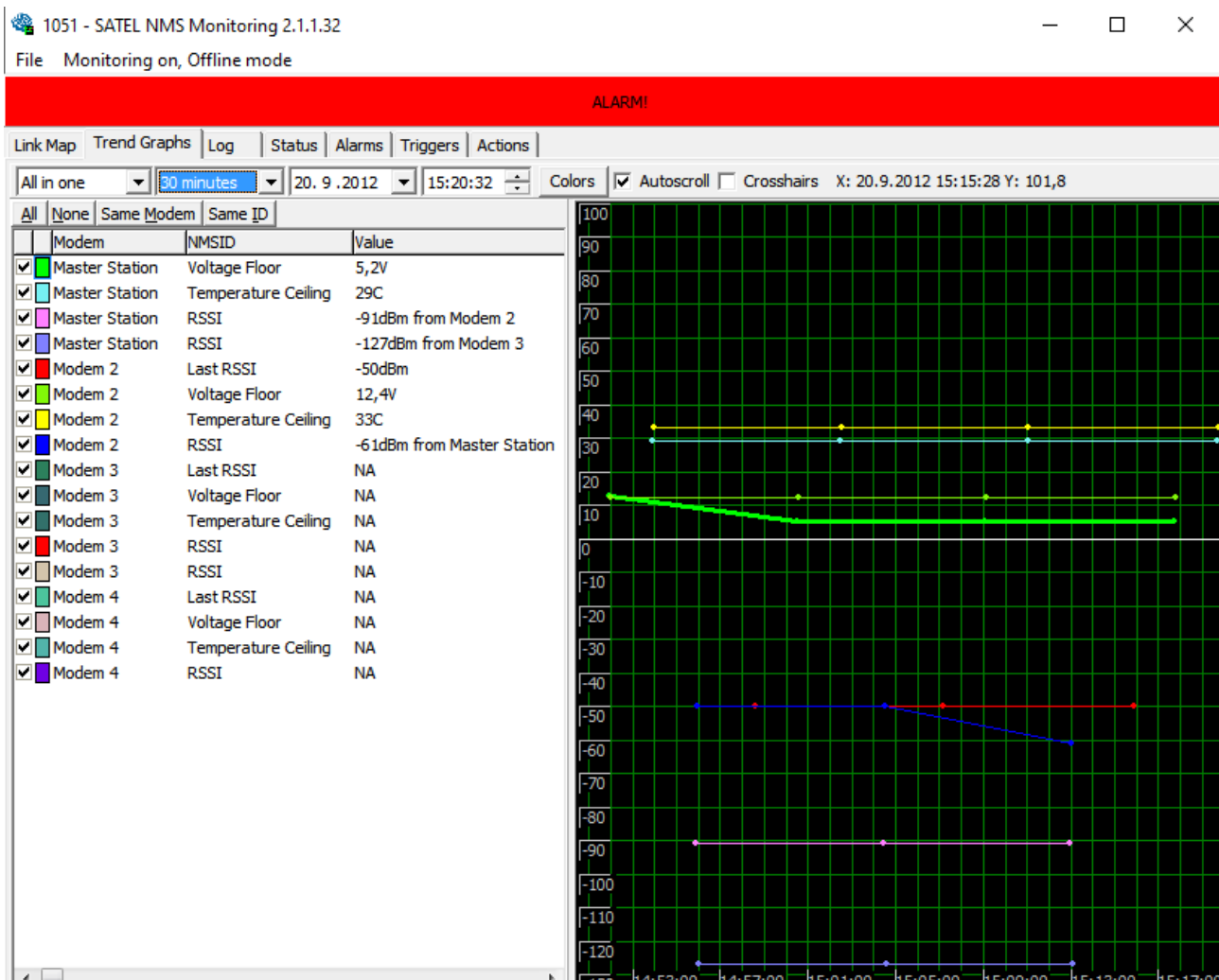

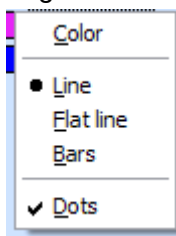


Figure 42: Trend Graphs view

Options in this view:

Option	Explanation
Sorting	<feature not supported yet> Use “All in one”
Time scale	Choose the time span to be shown. The selection equals the length of the X-axis on the graph. Choose “Fit All” to show all available data.
Start date	Select first visible date on the X-axis of the graph. Note that if Autoscroll is selected, this and Start time are disabled (greyed) and the first visible data point depends on the Time scale and current date time.
Start time	Select first visible time on the X-axis of the graph. See comments regarding Start date, above.
Colours button	Choose colours of the graph background, grids and

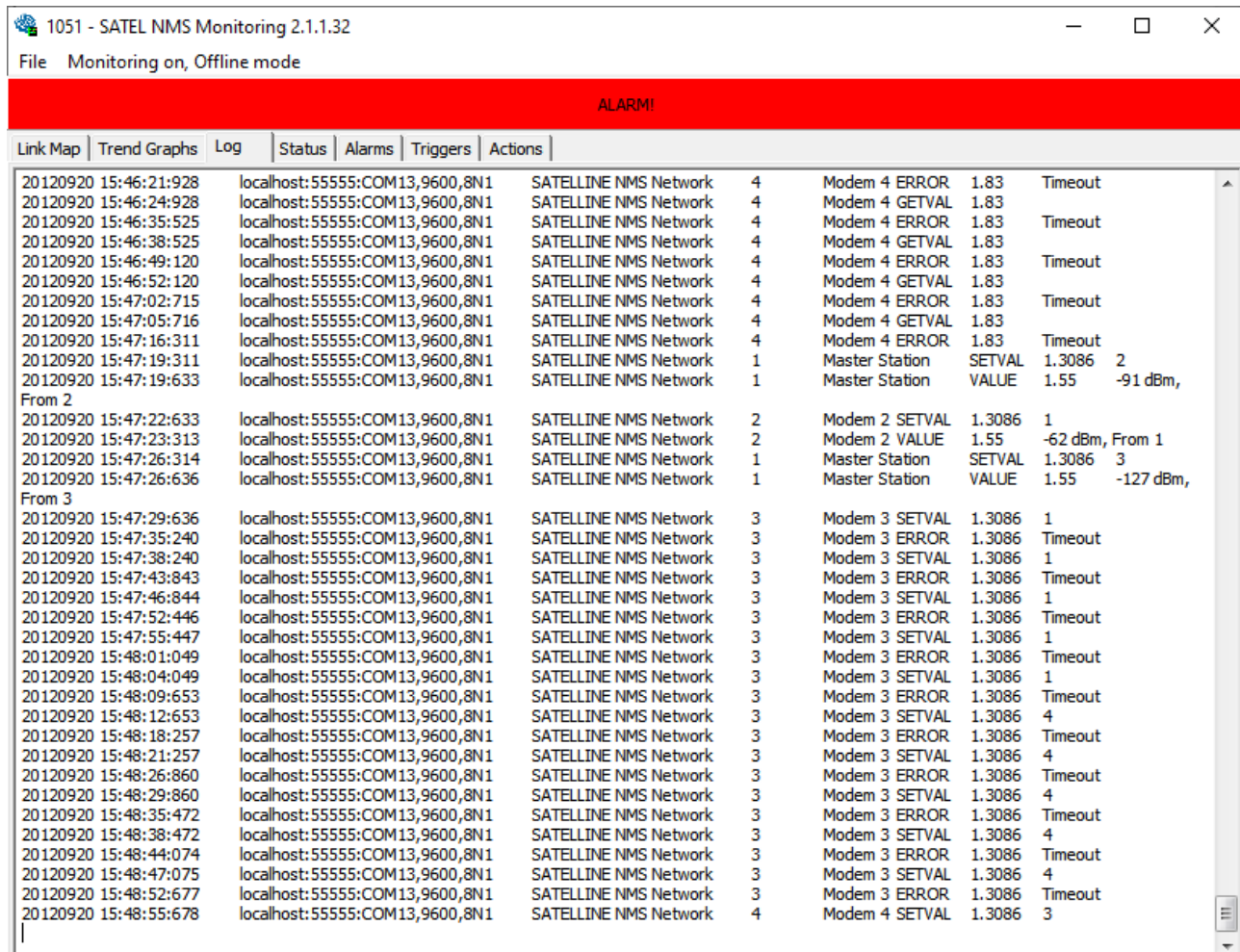
	numeric labels.
Autoscroll	The view will scroll automatically forward and display the newest data points as they arrive.
Crosshairs	Two lines are drawn intersecting at the mouse cursor to help with the comparison of graph values.
Graph Legend	<p>One row is displayed for each <i>Poll Item</i> that has been defined in Monitoring settings (NMS PC Setup).</p> <p>Selecting a line in this view causes the corresponding graph to be drawn with a thicker line width.</p> <p>The Checkboxes <input checked="" type="checkbox"/> control visibility of the graphs. You can easily check either <b>All</b>, <b>None</b>, <b>Same Modem</b> or <b>Same ID</b> graphs by clicking the small buttons at the top of the Legend.</p>
Choose the colour of a graph	The color of a graph can be changed by first selecting, then <b>right-clicking</b> on a color box  and selecting "Color" from the pop-up menu. The color choices are not saved and are randomized each time a system file is loaded.
Choose line style of a graph	<p>By first selecting a value, then <b>right clicking</b> in the Graph Legend view, the context menu appears.</p>  <p>You can choose one of three line style:</p> <ul style="list-style-type: none"> <li>• Line: data points are connected by straight lines</li> <li>• Flat line: changes in data are shown as steps</li> <li>• Bars: Each data point is drawn as bar from the origin (Y=0)</li> </ul> <p>You can also choose if Dots are drawn at the position of each data point (default on)</p>

### 7.5.3 Log tab

The log lines consist of several tab-separated values. These are explained in the following table. Values can be copied from the log by selecting lines and choosing Copy from the pop-up menu (accessible by right click) or Ctrl-C.

In this view the NMS messages sent and received to and from the system radio modems are shown. This is the NMS transmit log for the program. It is also written into a file. See chapter 8.

Path to the log files is shown at the bottom of the window.



Time	From	To	Network	Modem	Status	Value
20120920 15:46:21:928	localhost:55555:COM13,9600,8N1	SATELLINE NMS Network	4	Modem 4 ERROR	1.83	Timeout
20120920 15:46:24:928	localhost:55555:COM13,9600,8N1	SATELLINE NMS Network	4	Modem 4 GETVAL	1.83	
20120920 15:46:35:525	localhost:55555:COM13,9600,8N1	SATELLINE NMS Network	4	Modem 4 ERROR	1.83	Timeout
20120920 15:46:38:525	localhost:55555:COM13,9600,8N1	SATELLINE NMS Network	4	Modem 4 GETVAL	1.83	
20120920 15:46:49:120	localhost:55555:COM13,9600,8N1	SATELLINE NMS Network	4	Modem 4 ERROR	1.83	Timeout
20120920 15:46:52:120	localhost:55555:COM13,9600,8N1	SATELLINE NMS Network	4	Modem 4 GETVAL	1.83	
20120920 15:47:02:715	localhost:55555:COM13,9600,8N1	SATELLINE NMS Network	4	Modem 4 ERROR	1.83	Timeout
20120920 15:47:05:716	localhost:55555:COM13,9600,8N1	SATELLINE NMS Network	4	Modem 4 GETVAL	1.83	
20120920 15:47:16:311	localhost:55555:COM13,9600,8N1	SATELLINE NMS Network	4	Modem 4 ERROR	1.83	Timeout
20120920 15:47:19:311	localhost:55555:COM13,9600,8N1	SATELLINE NMS Network	1	Master Station SETVAL	1.3086	2
20120920 15:47:19:633	localhost:55555:COM13,9600,8N1	SATELLINE NMS Network	1	Master Station VALUE	1.55	-91 dBm,
From 2						
20120920 15:47:22:633	localhost:55555:COM13,9600,8N1	SATELLINE NMS Network	2	Modem 2 SETVAL	1.3086	1
20120920 15:47:23:313	localhost:55555:COM13,9600,8N1	SATELLINE NMS Network	2	Modem 2 VALUE	1.55	-62 dBm, From 1
20120920 15:47:26:314	localhost:55555:COM13,9600,8N1	SATELLINE NMS Network	1	Master Station SETVAL	1.3086	3
20120920 15:47:26:636	localhost:55555:COM13,9600,8N1	SATELLINE NMS Network	1	Master Station VALUE	1.55	-127 dBm,
From 3						
20120920 15:47:29:636	localhost:55555:COM13,9600,8N1	SATELLINE NMS Network	3	Modem 3 SETVAL	1.3086	1
20120920 15:47:35:240	localhost:55555:COM13,9600,8N1	SATELLINE NMS Network	3	Modem 3 ERROR	1.3086	Timeout
20120920 15:47:38:240	localhost:55555:COM13,9600,8N1	SATELLINE NMS Network	3	Modem 3 SETVAL	1.3086	1
20120920 15:47:43:843	localhost:55555:COM13,9600,8N1	SATELLINE NMS Network	3	Modem 3 ERROR	1.3086	Timeout
20120920 15:47:46:844	localhost:55555:COM13,9600,8N1	SATELLINE NMS Network	3	Modem 3 SETVAL	1.3086	1
20120920 15:47:52:446	localhost:55555:COM13,9600,8N1	SATELLINE NMS Network	3	Modem 3 ERROR	1.3086	Timeout
20120920 15:47:55:447	localhost:55555:COM13,9600,8N1	SATELLINE NMS Network	3	Modem 3 SETVAL	1.3086	1
20120920 15:48:01:049	localhost:55555:COM13,9600,8N1	SATELLINE NMS Network	3	Modem 3 ERROR	1.3086	Timeout
20120920 15:48:04:049	localhost:55555:COM13,9600,8N1	SATELLINE NMS Network	3	Modem 3 SETVAL	1.3086	1
20120920 15:48:09:653	localhost:55555:COM13,9600,8N1	SATELLINE NMS Network	3	Modem 3 ERROR	1.3086	Timeout
20120920 15:48:12:653	localhost:55555:COM13,9600,8N1	SATELLINE NMS Network	3	Modem 3 SETVAL	1.3086	4
20120920 15:48:18:257	localhost:55555:COM13,9600,8N1	SATELLINE NMS Network	3	Modem 3 ERROR	1.3086	Timeout
20120920 15:48:21:257	localhost:55555:COM13,9600,8N1	SATELLINE NMS Network	3	Modem 3 SETVAL	1.3086	4
20120920 15:48:26:860	localhost:55555:COM13,9600,8N1	SATELLINE NMS Network	3	Modem 3 ERROR	1.3086	Timeout
20120920 15:48:29:860	localhost:55555:COM13,9600,8N1	SATELLINE NMS Network	3	Modem 3 SETVAL	1.3086	4
20120920 15:48:35:472	localhost:55555:COM13,9600,8N1	SATELLINE NMS Network	3	Modem 3 ERROR	1.3086	Timeout
20120920 15:48:38:472	localhost:55555:COM13,9600,8N1	SATELLINE NMS Network	3	Modem 3 SETVAL	1.3086	4
20120920 15:48:44:074	localhost:55555:COM13,9600,8N1	SATELLINE NMS Network	3	Modem 3 ERROR	1.3086	Timeout
20120920 15:48:47:075	localhost:55555:COM13,9600,8N1	SATELLINE NMS Network	3	Modem 3 SETVAL	1.3086	4
20120920 15:48:52:677	localhost:55555:COM13,9600,8N1	SATELLINE NMS Network	3	Modem 3 ERROR	1.3086	Timeout
20120920 15:48:55:678	localhost:55555:COM13,9600,8N1	SATELLINE NMS Network	4	Modem 4 SETVAL	1.3086	3

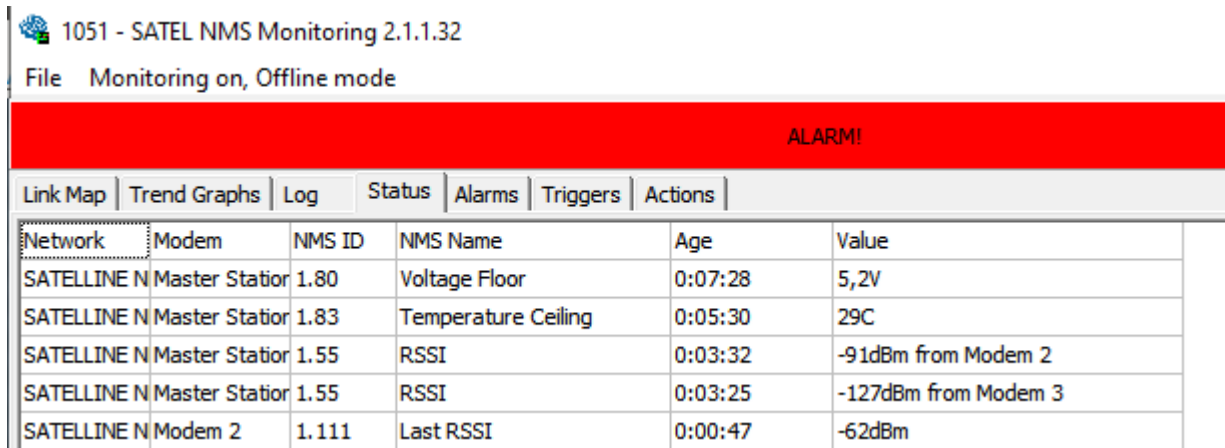
Figure 43: Log view

See chapter 10.1 for more information about the log.



### 7.5.4 Status tab

Show latest status of all NMS diagnostic values being polled from the modems. Each row shows the status of one unique variable.



Network	Modem	NMS ID	NMS Name	Age	Value
SATELLINE N	Master Station	1.80	Voltage Floor	0:07:28	5,2V
SATELLINE N	Master Station	1.83	Temperature Ceiling	0:05:30	29C
SATELLINE N	Master Station	1.55	RSSI	0:03:32	-91dBm from Modem 2
SATELLINE N	Master Station	1.55	RSSI	0:03:25	-127dBm from Modem 3
SATELLINE N	Modem 2	1.111	Last RSSI	0:00:47	-62dBm

Figure 44: Monitoring Status View

Column	Explanation
Network	Name of the network this diagnostic value and modem belong to.
Modem	Name of the modem.
NMS ID	NMSID of the diagnostic value.
NMS Name	Name of the diagnostic value.
Age	How “fresh” the value is, i.e. how much time has passed since the value was last received.
Value	The actual value, including conversion.

### 7.5.5 Alarms tab

This is a list of new and old alarms. When alarms happen, they will be listed in the new alarms area. When “Move to Old Alarms” is clicked, the alarms are moved to old alarms and the alarm indicator will turn green. This way you can “acknowledge” the alarms and still retain a list of alarms that have occurred earlier.

Click *Clear* to remove old alarms permanently from this view. The alarm log file will not be affected.

1051 - SATEL NMS Monitoring 2.1.1.32

File Monitoring on, Offline mode

**ALARM!**

Link Map | Trend Graphs | Log | Status | Alarms | Triggers | Actions

New Alarms

20.9.2012 15:52:41	SATELLINE NMS Network	3	Modem 3 1.80	Voltage Floor	Timeout	not responding
20.9.2012 15:52:46	SATELLINE NMS Network	3	Modem 3 1.80	Voltage Floor	Timeout	not responding

Old Alarms

20.9.2012 14:52:11	SATELLINE NMS Network	3	Modem 3 1.80	Voltage Floor	Timeout	not responding
20.9.2012 14:52:19	SATELLINE NMS Network	3	Modem 3 1.80	Voltage Floor	Timeout	not responding
20.9.2012 14:52:27	SATELLINE NMS Network	3	Modem 3 1.80	Voltage Floor	Timeout	not responding
20.9.2012 14:52:37	SATELLINE NMS Network	3	Modem 3 1.80	Voltage Floor	Timeout	not responding
20.9.2012 14:52:45	SATELLINE NMS Network	3	Modem 3 1.80	Voltage Floor	Timeout	not responding
20.9.2012 14:52:59	SATELLINE NMS Network	4	Modem 4 1.80	Voltage Floor	Timeout	not responding
20.9.2012 14:53:13	SATELLINE NMS Network	4	Modem 4 1.80	Voltage Floor	Timeout	not responding
20.9.2012 14:53:25	SATELLINE NMS Network	4	Modem 4 1.80	Voltage Floor	Timeout	not responding
20.9.2012 14:53:39	SATELLINE NMS Network	4	Modem 4 1.80	Voltage Floor	Timeout	not responding
20.9.2012 14:53:53	SATELLINE NMS Network	4	Modem 4 1.80	Voltage Floor	Timeout	not responding
20.9.2012 14:54:09	SATELLINE NMS Network	3	Modem 3 1.83	Temperature Ceiling	Timeout	not responding

Figure 45: Alarms tab

## 7.5.6 Triggers

This is a list of triggers that have been activated. Click *Clear* to remove old trigger activation records permanently from this view. The trigger log file will not be affected.

1051 - SATEL NMS Monitoring 2.1.1.32

File Monitoring on, Offline mode

**ALARM!**

Link Map | Trend Graphs | Log | Status | Alarms | Triggers | Actions

Triggers activated

20.9.2012 15:51:28	No con trigger: Modem 4 is not responding. Causes Alarm
20.9.2012 15:51:42	No con trigger: Modem 4 is not responding. Causes Alarm
20.9.2012 15:51:56	No con trigger: Modem 4 is not responding. Causes Alarm
20.9.2012 15:51:56	Voltage Trigger: Master Station, Voltage Floor(1.80) is less than 12. Causes Alarm
20.9.2012 15:52:10	No con trigger: Modem 3 is not responding. Causes Alarm
20.9.2012 15:52:18	No con trigger: Modem 3 is not responding. Causes Alarm
20.9.2012 15:52:27	No con trigger: Modem 3 is not responding. Causes Alarm
20.9.2012 15:52:41	No con trigger: Modem 3 is not responding. Causes Alarm
20.9.2012 15:52:46	No con trigger: Modem 3 is not responding. Causes Alarm
20.9.2012 15:52:58	No con trigger: Modem 4 is not responding. Causes Alarm
20.9.2012 15:53:12	No con trigger: Modem 4 is not responding. Causes Alarm
20.9.2012 15:53:24	No con trigger: Modem 4 is not responding. Causes Alarm
20.9.2012 15:53:38	No con trigger: Modem 4 is not responding. Causes Alarm
20.9.2012 15:53:52	No con trigger: Modem 4 is not responding. Causes Alarm
20.9.2012 15:54:08	No con trigger: Modem 3 is not responding. Causes Alarm
20.9.2012 15:54:16	No con trigger: Modem 3 is not responding. Causes Alarm
20.9.2012 15:54:24	No con trigger: Modem 3 is not responding. Causes Alarm
20.9.2012 15:54:32	No con trigger: Modem 3 is not responding. Causes Alarm
20.9.2012 15:54:43	No con trigger: Modem 3 is not responding. Causes Alarm
20.9.2012 15:54:55	No con trigger: Modem 4 is not responding. Causes Alarm

Figure 46: Triggers tab

### 7.5.7 Actions

This is a list of actions that have been performed by SATEL NMS PC Monitoring. Click *Clear* to remove old action records permanently from this view. The action log file will not be affected.

## 7.6 Troubleshooting

During monitoring the following problems might appear.

View	Symptom	Possible cause	Solution
Log	One remote modem always responds with an ERROR "No Response Received"	The modem address is incorrect in monitoring settings	Open the .sax file in NMS PC Setup and try to ping the modem. If the modem responds, the problem is in monitoring settings. Go to the Monitoring settings view and click "Update", then save system and restart monitoring.
		Modem settings are incorrect	Try to ping modem as above. If no response is received, the modem's settings are incorrect. Click Calculate routes and then synchronize the modem. Try to ping the modem to see it works before starting monitoring.
		No power or antenna	Check the cables and power supply.
Log	One or more remote modems sometimes respond ERROR "No Response Received"	Radio interference	There might be radio interference on the frequency. Try another frequency if legally possible. Try increasing TX power and/or enabling FEC.
		Message collisions	If your own DATA system is running and you are sending NMS messages (monitoring is on) in the OFFLINE mode, message will collide sometimes. How often, depends on the polling interval of your system and the monitoring. Switch monitoring to use ONLINE mode to remove collisions OR make polling

			interval(s) longer to lessen the amount of collisions.
Log	All modems in a network except the master modem always respond ERROR "No Response Received"	ONLINE mode with no user data traffic	ONLINE mode depends on user data to reach the modems. Since the master is directly connected using a cable, it responds. Either start the user data traffic or go to NMS PC Setup, Monitoring settings and switch to OFFLINE mode.
Log	All modems in a network always respond ERROR "No Response Received"	No connection to master modem	Check cables and/or connection settings. Use the "Local modem status" test in NMS PC Setup to make sure your cable / master connection is working. Then go to Monitoring settings, click Update and save the system. Then restart monitoring.
		Serial server is not configured correctly	Serial server's IP port setting (default 55555) must be the same that appears in the Log (example: localhost:55555:COM1) If bitrates and serial port settings other than 9600,8N1 are used, they must be configured in the serial server's <i>Communication settings</i> page.

If the above suggestions do not help, please do not hesitate to contact SATEL Technical Support.

## 8 SATEL SERIAL SERVER

This utility program allows multiple SATEL NMS PC programs to access the same (or different) serial ports. It is therefore a serial port multiplexer for NMS traffic. It can also convert IP connections into serial port connections. The serial port settings can be pre-configured in SATEL Serial Server or changed from the client NMS PC Setup using S3CP.

Most of the time Serial Server works transparently in the background but sometimes it may be useful or necessary to use it for some special configuration.

### 8.1 Overview

SATEL Serial Server is a separate program executable. It is meant to perform the following tasks:

- Act as a multiplexer and translator between SATEL NMS PC client programs and the serial ports of the PC.
- Allow installing and using the client programs from a different PC than the serial ports are located in. (Using TCP/IP)
- Allow the possibility to configure default serial port settings for direct TCP/IP access

SATEL NMS PC Setup and Monitoring act as clients to Serial Server's server. The clients access the server using TCP/IP sockets. For this reason Serial Server is configured to listen at a TCP/IP port, usually 55555, though this can be changed.

The TCP/IP traffic uses RAW sockets, and the protocol used is called S3CP (SATEL Serial Server Command Protocol). Usually this protocol is completely invisible to the user and there is no need to be concerned over it. (Protocol documentation available separately)

S3CP includes commands to handle serial ports and send and receive NMS messages. Serial server translates the TCP/IP requests to SATEL NMS Protocol messages which are passed to the serial ports and this way to the NMS (diagnostic) port of the Radio Modem. The responses from the modem are translated back to S3CP and sent to the client.

An alternative way to form a connection from NMS client programs to the NMS Port of a modem is to define a direct TCP/IP port mapping. In this way, Serial Server can be configured to listen at another (or more) TCP/IP port number(s), for example 55556, which is then directly mapped to a serial port, for example COM1. This kind of mapping also requires pre-defining serial port settings, such as baud

rate, parity etc. See 8.3.3 for more information. If this kind of connection is used, the client SW must be configured to use a Direct TCP/IP connection, see 6.8.1.1

## 8.2 Common tasks

### 8.2.1 Accessing the Serial Server User Interface

Serial server is started by other SATEL NMS PC Programs as they need it. If you need to use the user interface (views) of Serial Server, the window can be accessed by clicking the icon in Windows Task Bar.



Figure 47: Serial Server icon

When the Task bar item is clicked, the window opens.

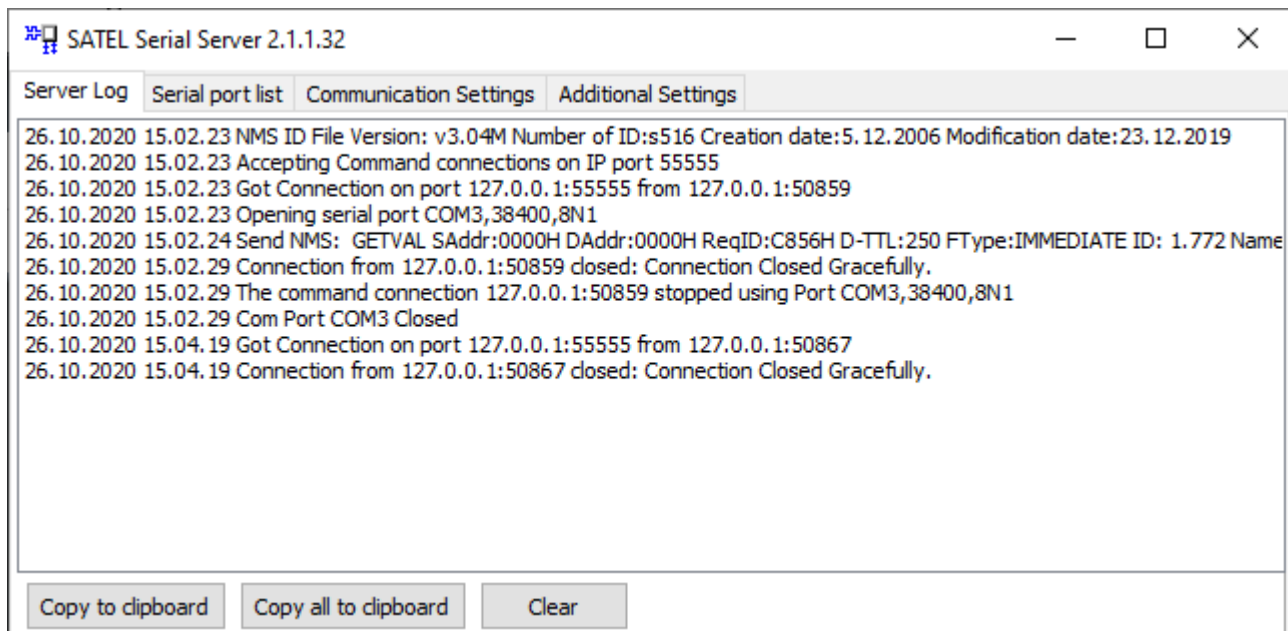


Figure 48: Serial server log tab

Note that usually serial server does not need to be configured or accessed in any way. The NMS Client programs automatically start Serial Server in the same PC and communicate with it. Only if you wish to define default serial port settings and/or change the serial server preferences do you need to open serial server.

### 8.2.2 Using serial ports of another computer

If the serial ports and the NMS programs are located in different PC's, the Serial Server must be installed into the PC having the ports, and the programs in the other PC can communicate with it over TCP/IP and use the serial ports. In this case the serial server must be started manually or from the Startup folder of Windows, for example.

See 8.3.3 for more information.

### **8.2.3 Troubleshooting serial port problems**

Some problems with serial port hardware can cause the serial ports to get stuck, unable to be opened or become unresponsive. Some serial port hardware or drivers cannot tolerate the port being opened or closed quickly. For this reason Serial Server by default keeps the ports open for 15 seconds, rather than open and close them in quick succession. See 8.3.4 for hardware compatibility settings if you are having problems.

### **8.2.4 Command line use**

Serial server can be used directly by opening a terminal connection to its command port (default 55555).

We recommend using putty.exe. Configure the connection as a RAW connection (no telnet control codes or SSH!) By writing "help" and pressing enter you can get a list of commands and instructions.

## **8.3 Server views**

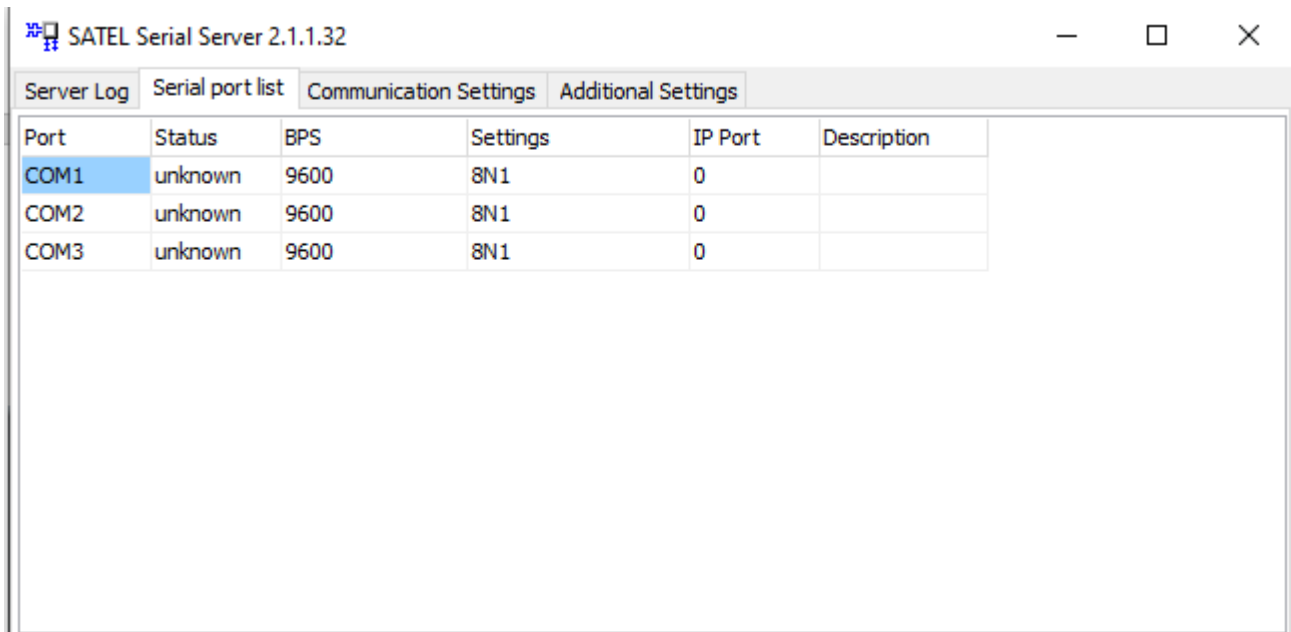
### **8.3.1 Server Log**

This view (Figure 45: Serial server log tab) shows information about the server. It shows incoming TCP/IP commands from NMS Client SW (NMS PC Setup and Monitoring), NMS Messages sent to and received from the Serial ports, and miscellaneous server messages.

### **8.3.2 Serial port list**

This view shows the current status of all known serial ports in the PC.





Port	Status	BPS	Settings	IP Port	Description
COM1	unknown	9600	8N1	0	
COM2	unknown	9600	8N1	0	
COM3	unknown	9600	8N1	0	

Figure 49: Serial port list view

Column	Explanation
Port	Serial port name/number
Status	<p><b>Open:</b> A client has opened the port and is using it</p> <p><b>Open_x0:</b> No client is using the port, but Serial server is keeping it open because the KeepOpen feature is in use ( See 7.3.3 )</p> <p><b>Open_x2</b> (or more): Several NMS PC client programs are sharing the port</p> <p><b>InUse:</b> The port is in use by a program (or serial server itself if update has not been clicked)</p> <p><b>Available:</b> Port is not in use by any program</p> <p><b>unknown:</b> Automatic port status detection (See7.3.3) is off and Update has not been clicked, the port's status is unknown.</p>
BPS	If status begins with Open, shows the port speed which Serial Server is using for that port. If Status is anything else, shows the default port speed that will be used if the port is opened without the opening software specifying a speed. This can happen for example if a direct TCP/IP connection is opened (See 7.3.3)
Settings	<p>Anything said about the BPS column and status also applies to this column.</p> <p>Shows the other settings of the serial port.</p> <p>The first number is the number of data bits: 7 or 8</p> <p>The second character is the parity settings: N(o parity), E(ven parity), O(dd parity), M(ark) or S(pace).</p> <p>The third character is the number of stop bits:0, 1 or 2</p>

IP Port	Usually 0. This means no direct IP port has been mapped to this serial port. Other numbers indicate that a direct IP port HAS been mapped (See 7.3.3)
Description	If a description has been given for the port, it is shown here (See 7.3.3)

### 8.3.3 Communication Settings

This view allows you to configure the TCP/IP ports the Serial Server is listening at, and define default serial port settings.

SATEL Serial Server 2.1.1.32

Server Log Serial port list **Communication Settings** Additional Settings

IP port for interactive command line mode (default 55555)  
55555

Predefined port settings (default values in parentheses)

Serial Port	BPS (9600)	Settings (8N1)	Raw IP Port (none)	Description

Examples:  
COM1 9600 8N1 55561

Cancel changes Apply and Save settings

Figure 50: Communication Settings view

View control	Explanation
IP Port for interactive command line mode	This is the main IP port where serial server is expecting connections from SATEL NMS client programs. This port uses the S3CP protocol.
Predefined port settings	Default port settings and Direct IP port to serial port mappings can be defined here. Just click and edit the table directly.
Serial Port	Enter the desired serial port name like shown, "COM1" is the serial port 1 etc. This String is the Windows Device Name of the serial port.
BPS	Define a serial port speed. Use only valid speeds that the modem supports and is configured with. Examples: 2400, 19200.
Settings	Define port settings. Use only valid settings that the modem supports and is configured with. The first number is the number of data bits: 7 or 8 The second character is the parity settings: N(o parity), E(ven parity), O(dd parity), M(ark) or S(pace). The third character is the number of stop bits: 0, 1 or 2

Description	Write a freely chosen description for the port if you wish. This description is shown in NMS client programs (Setup), in the Network connection settings window, Available COM ports list.
Cancel changes	Lose all your changes in this view and load the last saved settings.
Apply and Save settings	Save and start using the settings you have entered. Settings are saved into the Windows registry. HKEY_CURRENT_USER\Software\Satel\SATELSerialServer\1.0) Please do not modify them manually, there are no hidden settings!

### 8.3.4 Additional Settings

This view controls the settings of Serial Server

SATEL Serial Server 2.1.1.32

Server Log | Serial port list | Communication Settings | **Additional Settings**

☐ Detailed server logs

☐ Automatic port status detection

Timeout (ms)  
6000

☐ Keep COM ports open (hardware compatibility setting)

Time to keep port open (seconds)  
8000

Maximum Server Log size (lines in memory)  
5000

Cancel changes | Apply and Save settings

Figure 51: Additional Settings view

View control	Explanation
Detailed server logs	Shows more text in Server Log view. Additional log items are mostly hexadecimal dumps of the NMS protocol.
Automatic port status detection	Automatically tries to open serial ports to see if they are available. Some serial ports and/or drivers crash when this option is on. If you are having problems, disable it.
Timeout (ms)	Timeout of NMS Messages in milliseconds. Leave this as a very large number (default 10000, or 10 seconds), as the

	<p>client programs handle timeouts. <b>Setting this to a lower number can cause “No Response” problems in Monitoring!</b></p> <p>Recommended values with EASY+ are 9600baud 10000ms, 38400&amp; 115200baud 6000ms.</p>
Keep COM ports open (hardware compatibility setting)	<p>Keeps serial ports open for some time, instead of closing and opening them in between of all NMS messages.</p> <p>Some serial port hardware requires this to be enabled, others require it to be disabled. Most work either way. Default is Enabled.</p>
Time to keep port open	<p>This value is in seconds. Default is 15. IT is usually not needed to edit this value.</p>
Maximum server log size	<p>How many lines of Server Log to keep in RAM. If set too large, updating the Server Log View takes significant CPU resources. It is recommended to keep this below 5000.</p>
Cancel changes	<p>Lose all your changes in this view and load the last saved settings</p>
Apply and Save settings	<p>Save and start using the settings you have entered. Settings are saved into the Windows registry. (HKEY_CURRENT_USER\Software\Satel\SATELSerialServer\1.0) Please do not modify them manually, there are no hidden settings!</p>

## **9 SATEL PACKET FILTER EDITOR**

This tool program is used to define packet filters settings used by Master Modems in NMS Routing mode networks to extract addresses from outgoing data packets for use in routing.

There are several protocols already supported as well as some general-purpose and example packet filters included with SATEL NMS PC. In case these are insufficient to your needs, you may define your own packet filters to use with your program.

SATEL technical support also can help in defining filters for your needs.

## 10 LOG FILES

SATEL NMS PC programs will write some log files. Some of the programs also contain logs which are not written to disk, but can be viewed in the program window and copied to the clipboard. The user can also cause SATEL NMS PC Monitoring to write custom log files during monitoring by defining certain triggers and actions. (see 6.9.3.1 Adding or editing an Action)

Whenever a program adds a new log line to the log file on disk, the program will do so according to the following procedure:

1. open the file
2. write into it
3. close it

This makes it possible to import data into other programs in almost real time from the log file, because the log file is not reserved for exclusive use by the program. Any reading program must also take care to open the file for shared read-only access so as not to prevent the writing.

### 10.1 Log types

SATEL NMS PC Monitoring will write a log file to the location defined in monitoring settings of SATEL NMS PC Setup. The log file is a Tab-separated file. There is one log entry per line.

One log file per day will be generated. The log files are named in the following format: **satelnmsyyyyymmdd.log** where *yyyy* is the year, *mm* is the month and *dd* is the current day. Example: **satelnms20081229.log**

File name	Location	Format	Description	Application
satelnmsyyyyymmdd.log	Default: Program Install directory	Tab-separated	Monitoring traffic log	SATEL NMS PC Monitoring
triggersyyyyymmdd.log	OR	Lines of text	Monitoring trigger log	SATEL NMS PC Monitoring
actionsyyyyymmdd.log	Monitoring Log file directory, if set.	Lines of text	Monitoring action log	SATEL NMS PC Monitoring

alarmsyyyymmdd.log		Tab-separated	Monitoring alarm log	SATEL NMS PC Monitoring
Custom	Any directory	Custom	Custom user log	SATEL NMS PC Monitoring
None	In Serial Server	Lines of text	Serial server log	SATEL Serial Server
None	In NMS PC Setup	Lines of text	Comm Log	SATEL NMS PC Setup

### 10.1.1 Monitoring traffic log

SATEL NMS PC Monitoring writes all sent and received NMS messages into this log file. The log file is created when the first line of the day is written, i.e. there will never be an empty log file.

Log file columns, separated by **tab** characters:

Value	Example(s)	Description
Timestamp	20120920 15:33:35:917	Time when the message was sent or received. Format is YYYYMMDD hh:mm:ss:msec
Connection settings string	localhost:55555:COM13,9600,8N1	Connection used to send/receive the message. Format is <ip address>:<ip port>:<serial port>,<bps>,<databits,parity,stopbits>
Network name	SATELLINE NMS Network	Name of the network as defined in NMS PC Setup. Note that in a multi-network system, all network's messages appear in this view.
Destination modem address	3	Address where the message was sent to / received from
Destination modem name	Modem 3	Name of the modem where the message was sent to / received from
NMS Message type	VALUE	Message type. One of GETVAL, SETVAL, VALUE, ERROR.
NMSID	1.111 1.80	NMS ID of the diagnostic parameter requested/received.
NMS Value	-50 -91 dBm, From 2	Value of the diagnostic parameter, or "Timeout" if the modem could not be reached. Note that this is a "RAW" value, no conversions have been made. (So Voltage values are 10x larger here than actually)



		Link RSSI values include the signal strength and originating modem address.
--	--	---

Example lines from a log file: (Note that tab characters have been replaced by dual spaces here for readability)

```
6.6.2007 14:17:26 localhost:55555:COM5 Test Net 3 Modem 3 SETVAL 1.3086 1
6.6.2007 14:17:26 localhost:55555:COM5 Test Net 3 Modem 3 VALUE 1.55 -95 dBm, From 1
6.6.2007 14:17:28 localhost:55555:COM5 Test Net 1 Master Station GETVAL 1.80
6.6.2007 14:17:28 localhost:55555:COM5 Test Net 1 Master Station VALUE 1.80 120
6.6.2007 14:17:31 localhost:55555:COM5 Test Net 2 Modem 2 GETVAL 1.80
6.6.2007 14:17:31 localhost:55555:COM5 Test Net 2 Modem 2 VALUE 1.80 121
6.6.2007 14:17:33 localhost:55555:COM5 Test Net 3 Modem 3 GETVAL 1.80
6.6.2007 14:17:33 localhost:55555:COM5 Test Net 3 Modem 3 VALUE 1.80 122
6.6.2007 14:17:34 localhost:55555:COM5 Test Net 1 Master Station GETVAL 1.83
6.6.2007 14:17:34 localhost:55555:COM5 Test Net 1 Master Station VALUE 1.83 29
```

### 10.1.2 Monitoring trigger log

SATEL NMS PC Monitoring writes a line into this log whenever a trigger matches. The log file is created when the first line of the day is written, i.e. there will never be an empty log file.

The log file contains one event per line. The line contains Timestamp (example: 6.6.2007 14:10:53), followed by Trigger name and Description. The values are NOT tab-separated.

Examples:

```
29.10.2008 15:48:13 Trigger: Modem 2, Voltage Floor(1.80) is less than 12. Causes Alarm
29.10.2008 15:48:55 link breaks: Modem 2, (15.4095) link breaks . Causes Alarm
```

### 10.1.3 Monitoring alarm log

SATEL NMS PC Monitoring writes a line into this log whenever an alarm is caused by a trigger. The log file is created when the first line of the day is written, i.e. there will never be an empty log file.

The log file contains one event per line. The line contains the following columns:

- Timestamp (example: 6.6.2007 14:10:53)
- Network Name (example: Test Net)
- Modem address (example: 3)
- Modem name (example: Modem 3)
- NMSID (example: 1.83)
- NMSID Name (example: Voltage)
- Value (example: -95 dBm, From 1)
- Alarm condition
- Trigger threshold

Example log line (tabs replaced by double spaces for clarity):

```
29.10.2008 15:47:49 test 1 Master Station 1.80 Voltage Floor 102 is less than 12
```

#### **10.1.4 Monitoring action log**

SATEL NMS PC Monitoring writes a line into this log whenever an action is performed in response to a matching trigger. The log file is created when the first line of the day is written, i.e. there will never be an empty log file.

The log file contains one event per line. The line contains Timestamp (example: 6.6.2007 14:10:53), followed by Action name and last result. The values are NOT tab-separated.

#### **10.1.5 Custom User log**

Custom user logs are written by SATEL NMS PC Monitoring. The user must define trigger and actions settings that cause Monitoring to write the log. Many variables are available to be written into the log.

See Chapters 6.9.3.1 Adding or editing an Action and 11.1 Custom Log File: Example Trigger and Action definitions for more information.

#### **10.1.6 Serial server log**

SATEL Serial Server includes a log view with details about several communication events between it and the other programs as well as the modems.

Lines from this log can be selected using the mouse and copied using the keyboard shortcut Ctrl-C. This can be useful if troubleshooting NMS communication issues with SATEL Technical support.

Information included in this log:

- Serial port opening and closing
- NMS message requests and responses
- NMS Errors

#### **10.1.7 Comm Log**

SATEL NMS PC Setup has a log view for communication events and messages. Lines from this log can be selected with the mouse and copied using the keyboard shortcut Ctrl-C. This can be useful if troubleshooting NMS communication issues with SATEL Technical support.

## 11 EXAMPLES

This chapter contains some examples of configuring the settings.

### 11.1 Custom Log File: Example Trigger and Action definitions

Programs used: SATEL NMS PC Setup

This example shows how to configure Monitoring settings of a system so that the following functionality is achieved:

- Diagnosed parameters are
- Voltage of each modem
- Temperature of each modem
- RSSI of each link in both directions

An entry will be written in a *Custom Log file* when (and ONLY when):

- The Voltage of a modem drops below 12 Volts
- The Temperature of a modem rises above 40 degrees Celsius
- The RSSI of a Link drops below -105 dBm
- An NMS message timeouts

The filename of the custom log will be "C:\work\NMS\_SCADA\_alarms.log"

#### 11.1.1 Polling settings

These settings are defined in the Polling settings tab (6.9.1). All Diagnostic parameters are checked. Other settings are left as they are.

#### 11.1.2 Actions

One Action, "Write to Log" will be defined. This is done first, so that the Action may be added straight away to the Trigger definitions.

Use the Action settings tab (6.9.3). Click Add and use the following values:

<b>Action name</b>	Write to Log
<b>File name</b>	c:\work\NMS_SCADA_alarms.log
<b>Line to insert</b>	\$TriggerName\$\$t\$\$ModemName\$\$t\$\$NmsName\$\$t\$\$NmsValue\$\$t\$\$LogTime\$\$t\$\$LogDate\$

The line that will be written to the log consists of the following variables, separated by ASCII tab characters: TriggerName, ModemName, NmsName, NmsValue, LogTime, LogDate. A linefeed (Windows-style) is automatically added after every line written into the log.

The line could also have included any text, additional linefeeds and/or multiples of the same variable.

### 11.1.3 Trigger settings

Four triggers will be defined. This is done in the Trigger settings tab (6.9.2). Click “Add” and select the correct values according to the following table. Then Click OK and repeat for the next Trigger.

Name	Type	Threshold	NMSID	Applies to	Cause Alarm	Actions
Voltage Low	less than	12	Voltage Floor	All modems in system	Yes	Write to Log
RSSI Low	less than	-105	RSSI			
Temperature High	greater than	40	Temperature Ceiling			
No response	NMS msg timeouts	0	-			

### 11.1.4 Example log file

To create this example, the settings defined in chapter 7 were loaded into SATEL NMS PC Monitoring and the network was allowed to run for a few minutes. At first, modem 2 was without power, which caused the No response entries in the log. The Voltage was kept below 12 Volts for both modems, which caused the Voltage Low entries. The radio connection was poor (No antennas & low TX power), which caused the “RSSI Low” entries in the log.

```

Voltage Low      Master Station Voltage Floor 109      13:53:43:0197 20071030
No response      Modem 2 Voltage Floor No response 13:53:55:0041 20071030
No response      Modem 2 Temperature Ceiling No response 13:54:09:0432 20071030
RSSI Low         Master Station RSSI -109 dBm, From 2 13:54:19:0088 20071030
No response      Modem 2 RSSI No Response 13:54:23:0822 20071030
Voltage Low      Master Station Voltage Floor 110      13:54:29:0463 20071030
No response      Modem 2 Voltage Floor No response 13:54:34:0197 20071030

```

No response	Modem 2 Temperature Ceiling	No response	13:54:48:0572	20071030
RSSI Low	Master Station RSSI	-109 dBm, From 2	13:54:58:0213	20071030
No response	Modem 2 RSSI No Response	13:55:02:0948	20071030	
Voltage Low	Master Station Voltage Floor	109	13:55:08:0604	20071030
No response	Modem 2 Voltage Floor No response	13:55:13:0338	20071030	
No response	Modem 2 Temperature Ceiling	No response	13:55:27:0713	20071030
RSSI Low	Master Station RSSI	-109 dBm, From 2	13:55:37:0370	20071030
Voltage Low	Master Station Voltage Floor	110	13:55:42:0698	20071030
Voltage Low	Modem 2 Voltage Floor	107	13:55:47:0448	20071030
RSSI Low	Master Station RSSI	-109 dBm, From 2	13:55:53:0354	20071030

### 11.1.5 Notes

The tab character should be used as a delimiter in the custom log file, since the NMS values may contain other characters typically used as separators, such as commas (,) and semicolons (;). The \$NumValue\$ variable can contain numbers, the minus sign '-' and/or the decimal point '.'.

## 11.2 Send email example: Action Definitions

This chapter shows example action settings which can be used to send email messages.

*NOTE: The email sending functionality is not included in SATEL NMS PC. An external email sending application must be used. In this example, a program called sendemail.exe is used. SATEL is not affiliated with the maker of this program in any way, and does not offer user support for the program beyond this document.*

### 11.2.1 Preparation

Define the network and polling and trigger settings similarly to the previous chapter.

### 11.2.2 Action setting to send email

Install an email sending program, such as the sendemail program (<http://caspiandotconf.net/menu/Software/SendEmail/>) or Blat (<http://www.blat.net/>)

Test the program using the windows shell (Start->Run->cmd.exe) first. When you know which command line options are needed to send email in your environment, you are ready to define the Action.

Go to Monitoring->Action settings tab (see 6.9.3). Click Add. Select the Execute a command Tab, and fill in the fields.

Command is the full name including path to the sendemail.exe

Parameter list is the command line including all the options necessary.

You may use the SATEL \$variables\$ to include information about the alarm in the email message.

The screenshot below gives an example command line.

**Action definition**

Action name:

Execute a command | **Write to file**

Command:

Parameter list, variables allowed (see below):

Available variables:

- \$t\$ -- Tab Character
- \$n\$ -- Newline (windows style)
- \$ModemName\$ -- Name of the modem
- \$NetworkName\$ -- Name of the network
- \$NmsID\$ -- ID of the NMS parameter
- \$NmsName\$ -- Name of the NMS parameter
- \$NmsValue\$ -- Value of the NMS parameter
- \$NumValue\$ -- Numeric value of a NMS Parameter
- \$LogTime\$ -- Time part of the time when the action was run (hh:mm:ss:nnn) (n=msecs)
- \$LogDate\$ -- Date part of the time, eg. 20080112 (yyyymmdd)
- \$DashedDate\$ -- Date with dashes, eg.2008-01-12 (yyyy-mm-dd)
- \$TriggerName\$ -- Name of the trigger
- \$TriggerDescription\$ -- Human-readable description of the trigger
- \$ActionName\$ -- Name of the action
- \$ActionDescription\$ -- Human-readable description of the action
- \$Unit\$ -- "V" for Volts, "C" for Celsius, "dBm", etc. as applicable
- \$OtherModem\$ -- The modem which originated the transmission whose signal strength was measured by \$ModemName\$. Applicable only with the RSSI NMS Parameter, otherwise this will be an empty string.

OK Cancel