

ADDING RADIO TO THE 3AS NMS NETWORK

NMS PC 2.1.1.32M3 installation packet

Download link:

<https://www.satel.com/support-and-services/downloads/>

Technical information -> Software -> SATEL_NMS_PC_software_v2.1.1.32_M3

V2.1.1.32M3 version contains the necessary changes for SATEL-EASy+ and SATEL-EASy Pro+.

V2.1.1.32M version contains the necessary changes for SATEL-EASy+

ADDING RADIO TO THE 3AS NMS NETWORK

1. Verify EASy+ (or Pro+) firmware is the latest version
2. Open NMS PC SW 2.1.1.32(M3) and the desired NMS network
3. Check out an old network channel spacing (12,5kHz/25kHz)
4. EASy+; connect to NARS-1F to serial port the computer
5. EASy Pro+:Connect to NARS-1F with NARS-ST to serial port the computer
6. Switch Programing mode ON
7. Turn on the modem

ADDING RADIO TO THE 3AS NMS NETWORK

1. Click Connection
2. Change port settings
3. Set the COM port to 38400 8N1
4. OK , OK,
5. Confirm; YES
6. Add to Network

The screenshot displays the SATEL software interface with several dialog boxes open. The 'Connection...' menu item is highlighted in red. The 'Network connection settings' dialog box shows 'A serial port on this machine' selected. The 'Serial port settings' dialog box shows 'COM1' selected for the Serial Port and '38400 8N1' selected for the Speed. The 'Confirm' dialog box shows 'Yes' selected. The 'Unknown Modem Found' dialog box shows a table of detected modems:

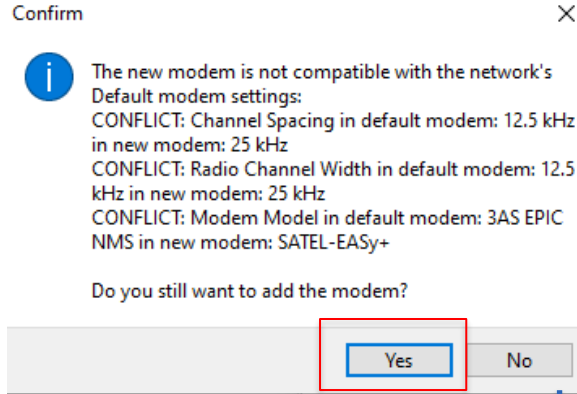
Modem	Serial Number
Visentin Regven	1729000144
Master Nostro	1729000145

The 'Add To Network' button is highlighted in red. The 'OK' button in the 'Serial port settings' dialog box is also highlighted in red.

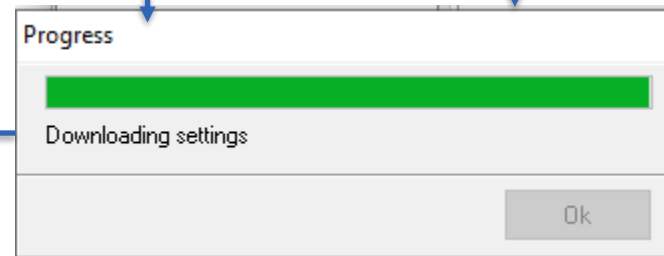
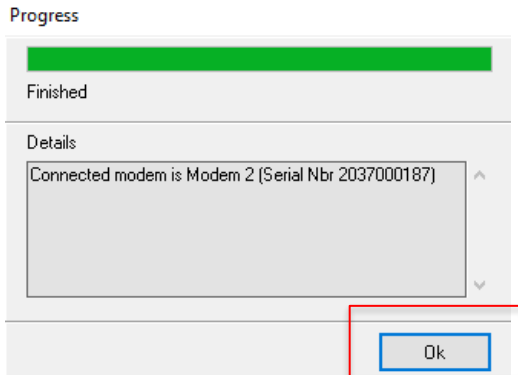
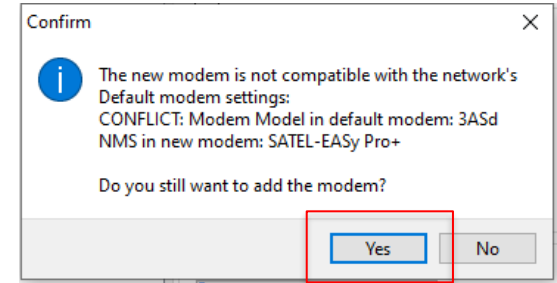
ADDING RADIO TO THE 3AS NMS NETWORK

1. Confirm
2. Progress
3. OK

This:



or/and this



ADDING RADIO TO THE 3AS NMS NETWORK

1. Check Advanced settings and control, Calibration; Radio bandwidth (NMD ID 1.1996) according to the old network is either 25kHz /12.5 kHz
2. Check Compatibility mode, and set it to SATELLINE-3AS NMS
3. Change PORT2 baud rate to 9600 bit/s (NMS port equals old radios)
4. Check Basic settings, the new radio serial port settings equals with the terminal device.

Screenshot of the NMS interface showing radio settings. The 'Radio Compatibility' dropdown is set to 'SATELLINE-3AS-NMS'. The 'Advanced settings and control' tab is selected, showing a table of parameters. The 'Calibration' section is expanded, showing 'Selected Channel Width' set to '25 kHz'. Red boxes highlight the 'Advanced settings and control' tab and the 'Calibration' section. Blue arrows point to the 'Radio Compatibility' dropdown and the 'Selected Channel Width' dropdown.

Name	Value	Update
FTP Start Using New File	0	9.46.!
Get All Values	Yes	9.46.!
Initialize Radio	No	9.46.!
Number of supported values	268	9.46.!
Number of value blocks	14	9.46.!

Calibration

Selected Channel Width	25 kHz	9.46.!
------------------------	--------	--------

ADDING RADIO TO THE 3AS NMS NETWORK

1. The operations according to the To Do list are performed and finally the synchronizations of the new modem and the Master modem in this sequence
2. The target addresses of the system (terminal addresses) must be known before proceeding from this point

